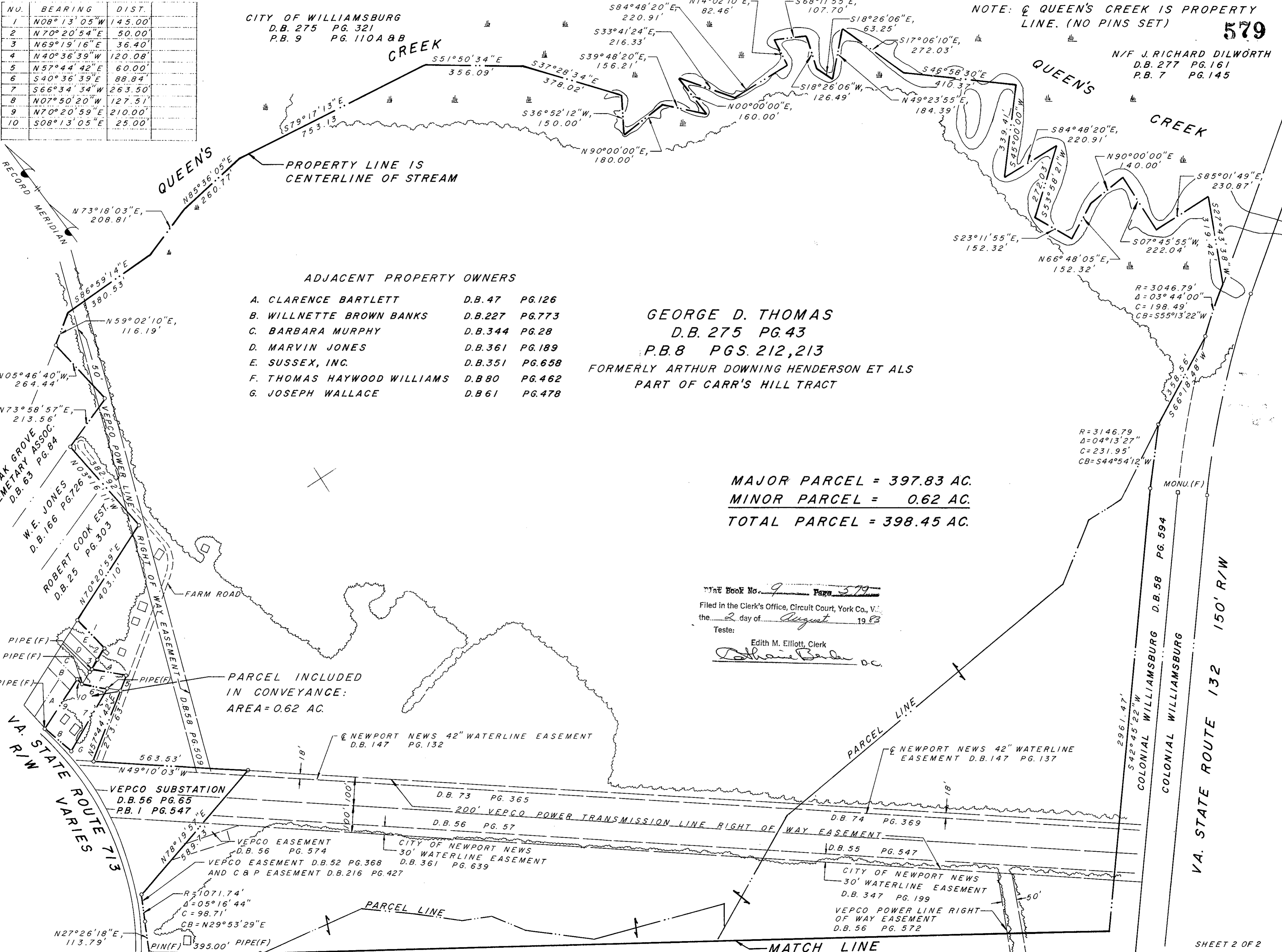


NO.	BEARING	DIST.
1	N08°13'05"W	145.00'
2	N70°20'54"E	50.00'
3	N69°19'16"E	36.40'
4	N40°36'39"W	120.08'
5	N57°44'42"E	60.00'
6	S40°36'39"E	88.84'
7	S66°34'34"W	263.50'
8	N07°50'20"W	127.51'
9	N70°20'59"E	210.00'
10	S08°13'05"E	25.00'

CITY OF WILLIAMSBURG
D.B. 275 PG. 321
P.B. 9 PG. 110A & B

NOTE: QUEEN'S CREEK IS PROPERTY LINE. (NO PINS SET) **579**
N/F J. RICHARD DILWORTH
D.B. 277 PG. 161
P.B. 7 PG. 145



PROPERTY LINE IS CENTERLINE OF STREAM

ADJACENT PROPERTY OWNERS

- A. CLARENCE BARTLETT D.B. 47 PG. 126
- B. WILLNETTE BROWN BANKS D.B. 227 PG. 773
- C. BARBARA MURPHY D.B. 344 PG. 28
- D. MARVIN JONES D.B. 361 PG. 189
- E. SUSSEX, INC. D.B. 351 PG. 658
- F. THOMAS HAYWOOD WILLIAMS D.B. 80 PG. 462
- G. JOSEPH WALLACE D.B. 61 PG. 478

GEORGE D. THOMAS
D.B. 275 PG. 43
P.B. 8 PGS. 212, 213
FORMERLY ARTHUR DOWNING HENDERSON ET ALS
PART OF CARR'S HILL TRACT

MAJOR PARCEL = 397.83 AC.
MINOR PARCEL = 0.62 AC.
TOTAL PARCEL = 398.45 AC.

Map Book No. 9 Page 379

Filed in the Clerk's Office, Circuit Court, York Co., Va.
the 2 day of August 1983

Teste:
Edith M. Elliott, Clerk
Edith M. Elliott

PARCEL INCLUDED IN CONVEYANCE:
AREA = 0.62 AC.