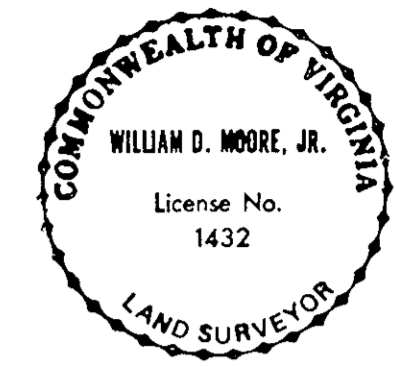


I HEREBY CERTIFY THAT THIS SURVEY WAS MADE ON THE GROUND AS PER RECORDED DESCRIPTION AND IS CORRECT; THERE ARE NO ENCROACHMENTS EITHER WAY ACROSS PROPERTY LINES EXCEPT AS SHOWN.

SIGNED: *William D. Moore, Jr.* DATE: 8/14/85
 WILLIAM D. MOORE, JR.
 L.S. 1432

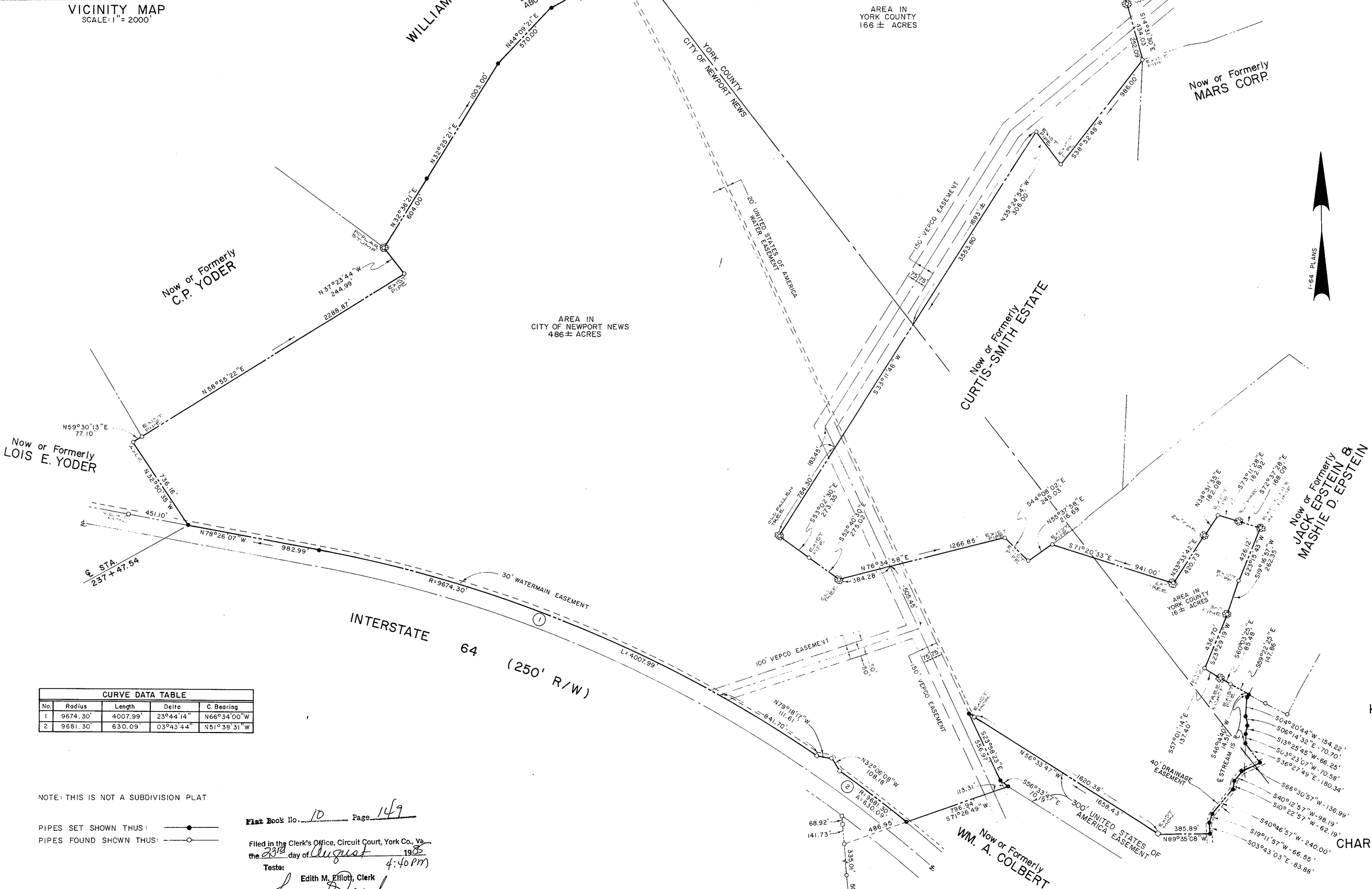


Talbot & Associates, Ltd.
 Architects, Engineers, Planners, Surveyors, Landscape Architects
 1001 Ardmore Square, Virginia Beach, VA 23462
 757-438-8800

- CURRENT PROPERTY OWNERS:
- WENDELL H. HUSSEY
 W.B. 118 p. 151 (NEWPORT NEWS)
 W.B. 53 p. 14 (YORK COUNTY)
 - GEORGIA GOODWIN HIDDEN, SUZANNE ELIZABETH
 McMURRAN, FRANCES HIDDEN FITZHUGH SHERK
 W.B. 3 p. 72 (NEWPORT NEWS)
 W.B. 29 p. 370 " "
 W.B. 118 p. 151 " "
 D.B. 350 p. 280 " "
 W.B. 21 p. 10 (YORK COUNTY)
 W.B. 53 p. 8 " "
 W.B. 53 p. 14 " "
 D.B. 131 p. 188 " "
 - SUZANNE HIDDEN McMURRAN, MAYO MCGILL
 FITZHUGH, III, PHILIP WALLACE HIDDEN
 FITZHUGH, CARY GRAYSON FITZHUGH,
 WOODROOF GRAVES FITZHUGH
 W.B. 118 p. 151 (NEWPORT NEWS)
 W.B. 53 p. 14 (YORK COUNTY)

- REFERENCES USED IN PREPARATION OF THIS PLAT:
- D.B. 55 p. 302 (NEWPORT NEWS)
 - D.B. 81 p. 552 " "
 - D.B. 63 p. 450 " "
 - D.B. 589 p. 319 " "
 - D.B. 307 p. 461 " "
 - D.B. 74 p. 251 " "
 - D.B. 74 p. 521 " "
 - D.B. 94 p. 567 " "
 - D.B. 99 p. 148 " "
 - D.B. 55 p. 303 " "
 - D.B. 65 p. 360 " "
 - D.B. 27 p. 414 " "
 - D.B. 27 p. 243 " "
 - D.B. 27 p. 100 " "
 - D.B. 27 p. 150 " "
 - D.B. 543 p. 36 " "
 - D.B. 926 p. 548 " "
 - D.B. 1010 p. 1634 " "
 - D.B. 29 p. 243 (YORK COUNTY)
 - D.B. 29 p. 455 " "
 - D.B. 28 p. 374 " "
 - D.B. 128 p. 298 " "
 - D.B. 345 p. 33 " "
 - D.B. 58 p. 226 " "
 - D.B. 60-A p. 144 " "
 - D.B. 359 p. 463 " "
 - D.B. 76 p. 518 (WARWICK COUNTY)

PLAT OF A PORTION OF THE
P. W. HIDDEN ESTATE
 CITY OF NEWPORT NEWS AND COUNTY OF YORK
 VIRGINIA



No.	Radius	Length	Delta	C Bearing
1	9674.30'	4007.99'	23°44'14"	N66°34'00"W
2	9681.30'	630.09'	03°43'44"	N51°39'31"W

NOTE: THIS IS NOT A SUBDIVISION PLAT

PIPES SET SHOWN THUS: ●
 PIPES FOUND SHOWN THUS: ○

Plat Book No. 10 Page 149

Filed in the Clerk's Office, Circuit Court, York Co., Va.
 the 23rd day of August 1985
 Tests: Edith M. Elliott, Clerk
Edith M. Elliott D.C.

Now or Formerly
**KEENER'S AUTO PARTS,
 INC.**

Now or Formerly
**CHARLES F. & JEANETTE
 J. KEENER**

Plat Book No. 10 Page 150

Filed in the Clerk's Office, Circuit Court, York Co., Va.
 the 23rd day of August 1985
 Tests: Edith M. Elliott, Clerk
Edith M. Elliott D.C.

TOTAL AREA: 667.994 AC.

Designed: _____
 Drawn: E.A.W.
 Checked: J.W.L.
 Scale: 1" = 400'
 Date: 8/13/85
 File No.: S-85601
 Project No.: 85601
 Sheet No.: _____
 of 1 Sheets