

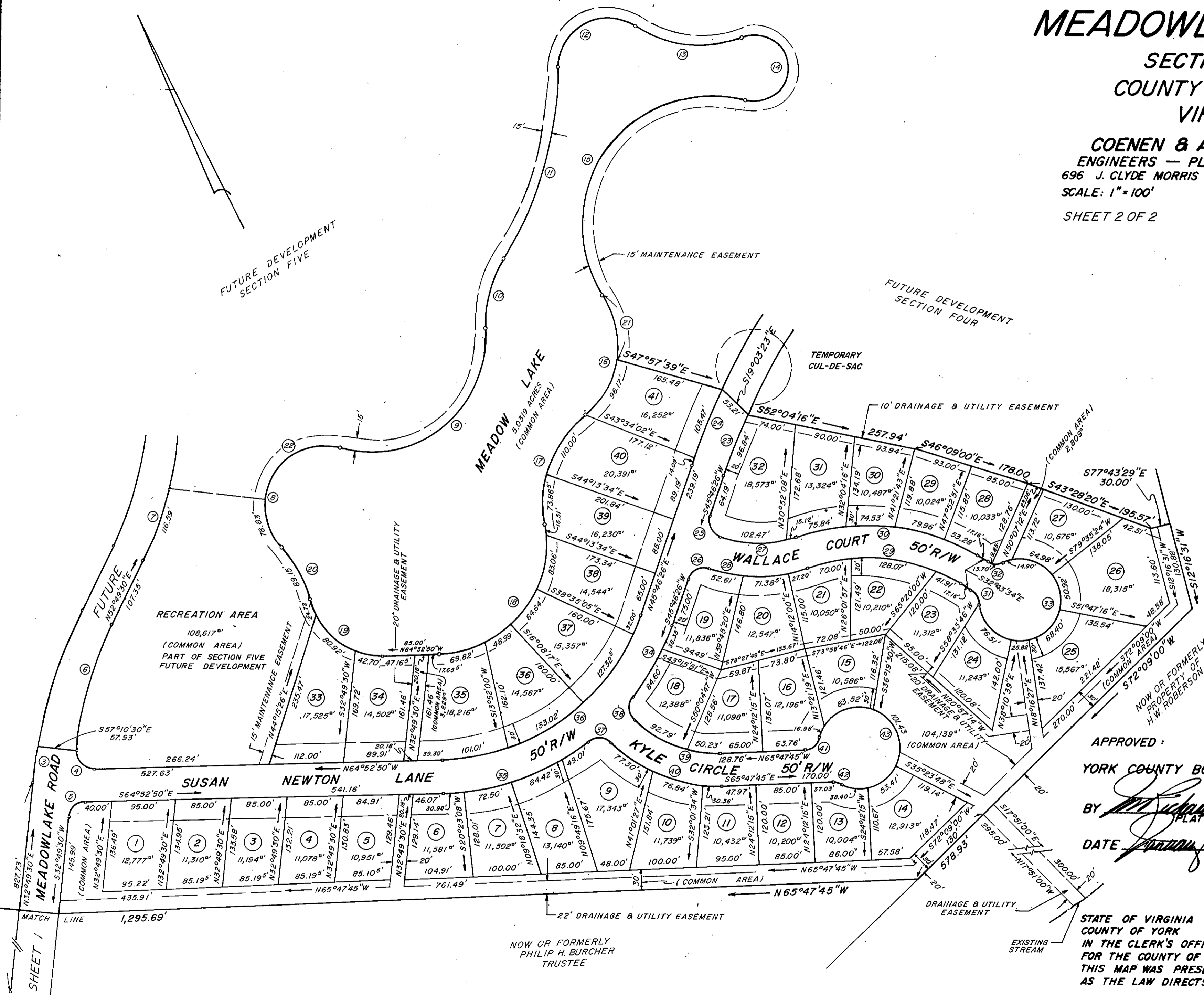
# MEADOWLAKE FARMS

## SECTION ONE

### COUNTY OF YORK

### VIRGINIA

**COENEN & ASSOCIATES, INC.**  
ENGINEERS — PLANNERS — SURVEYORS  
696 J. CLYDE MORRIS BLVD. — NEWPORT NEWS, VA.  
SCALE: 1" = 100'      DATE: OCTOBER 31, 1985  
SHEET 2 OF 2



APPROVED:  
YORK COUNTY BOARD OF SUPERVISORS  
BY *[Signature]* PLAT APPROVING AGENT  
DATE *January 6, 1986*

STATE OF VIRGINIA  
COUNTY OF YORK  
IN THE CLERK'S OFFICE OF THE CIRCUIT COURT  
FOR THE COUNTY OF YORK THE 7 DAY OF Dec 19 85  
THIS MAP WAS PRESENTED AND ADMITTED TO RECORD  
AS THE LAW DIRECTS, PLAT BOOK 10, PAGE 200

EDITH M. ELLIOTT, CLERK  
TESTE: *[Signature]* CLERK