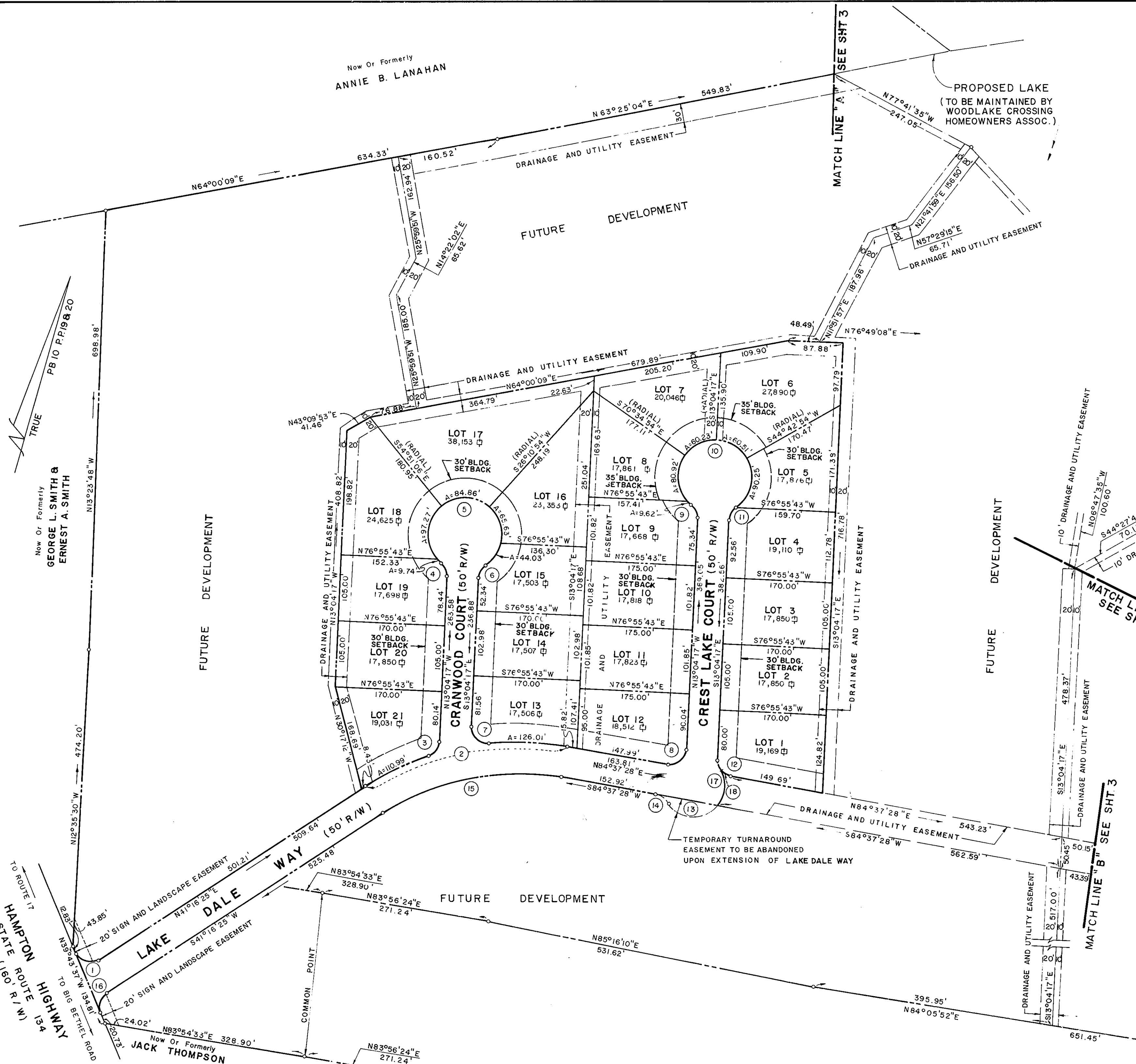


SUBDIVISION OF
WOODLAKE CROSSING
 SECTION 1
 COUNTY OF YORK, VIRGINIA



SCALE: 1"=100' MARCH 13, 1986
 SHEET 2 OF 3

REVISIONS	
DATE	DESCRIPTION
4/21/86	AS PER COUNTY COMMENTS



APPROVED:
 YORK COUNTY BOARD OF SUPERVISORS
 BY: *[Signature]*
 DATE: *July 1, 1986*

STATE OF VIRGINIA
 COUNTY OF YORK
 IN THE CLERK'S OFFICE OF THE CIRCUIT COURT FOR THE COUNTY OF YORK THE 12 DAY OF May, 1986 THIS MAP WAS PRESENTED AND ADMITTED TO RECORD AS THE LAW DIRECTS IN PLAT BOOK 10 PAGE 233.
 TESTE: EDITH M. ELLIOTT, CLERK
 BY: *[Signature]* CLERK