

PLAT OF PARCEL-A AND PARCEL-B,
AND PART OF LOT 1 RICH ACRES, AND
LOTS 2 & 3 RICH ACRES.

BETHEL DISTRICT
YORK COUNTY, VIRGINIA

JOHNSON • BAIRD AND ASSOCIATES
4396-B ROUTE 134 — TABB, VIRGINIA — 23602

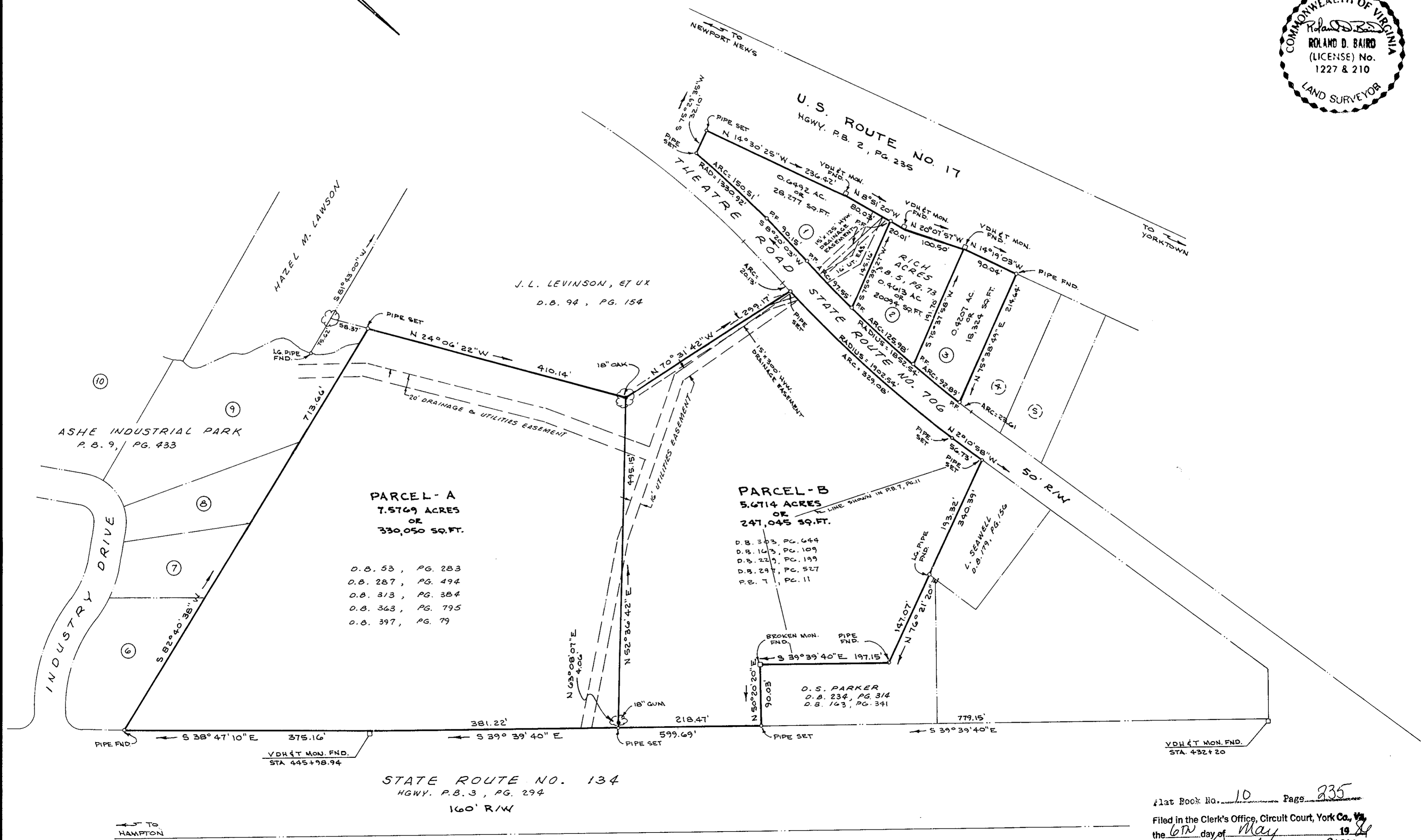
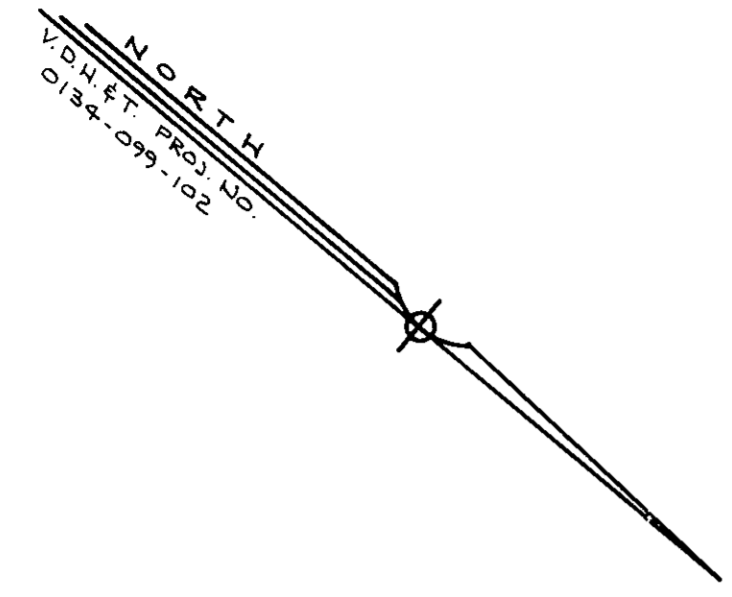
SCALE: 1" = 100'

DATE DEC. 6, 1985 SHEET 1
FILE NO. 85-170 OF 1

SUBJECT TO EASEMENTS, SERVITUDES AND
COVENANTS OF RECORD.



YORK COUNTY
APPROVED FOR RECORDATION
BY: *[Signature]*
TITLE: DIRECTOR OF PLANNING
DATE: 5/6/86



PARCEL - A
7.5769 ACRES
OR
330,050 SQ. FT.
D.B. 53, PG. 283
D.B. 287, PG. 494
D.B. 313, PG. 384
D.B. 363, PG. 795
D.B. 397, PG. 79

PARCEL - B
5.6714 ACRES
OR
247,045 SQ. FT.
D.B. 303, PG. 444
D.B. 163, PG. 109
D.B. 223, PG. 199
D.B. 297, PG. 527
P.B. 7, PG. 11

STATE ROUTE NO. 134
HWY. P.B. 3, PG. 294
160' R/W

Plat Book No. 10 Page 235

Filed in the Clerk's Office, Circuit Court, York Co., Va.
the 6th day of May 1986

Tests: Edith M. Elliott, Clerk
[Signature] D.C.