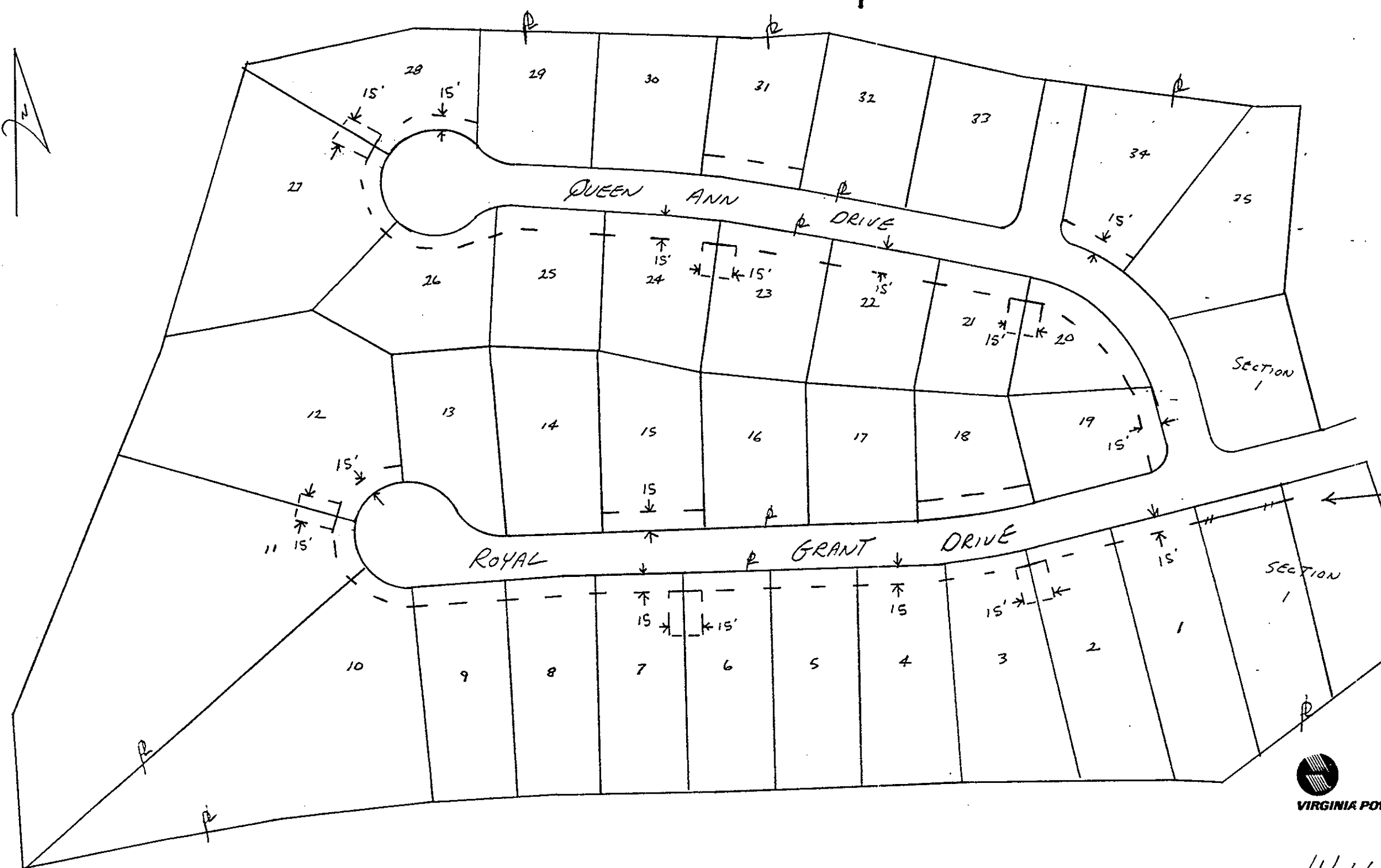
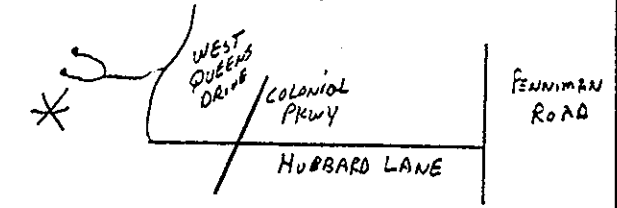


LOCATION COR 16



EXISTING RIV



Plat To Accompany Right-Of-Way Agreement

Virginia Electric and Power Company

Legend

Location Of Boundary Line Of Designated Right-of-Way 15' IN WIDTH

Filed in the Clerk's Office, Circuit Court, York Co., Va.
 the 9th day of October, 1986
 Teste: [Signature]
 Edith M. Elliott, Clerk
[Signature] D.C.

OWNERS INITIALS [Signature]

<u>WILLIAMSBURG</u>		
District		
<u>BRUTON</u>	<u>YORK COUNTY</u>	<u>VIRGINIA</u>
District-Township-Borough	County-City	State
<u>WILLIAMSBURG</u>	<u>28-86-033</u>	
Office	Plat Number	
<u>42716-00</u>	<u>M19370</u>	
Estimate Number	Grid Number	
<u>9-12-86</u>	<u>TEROLD ARANHAM</u>	
Date	By	