

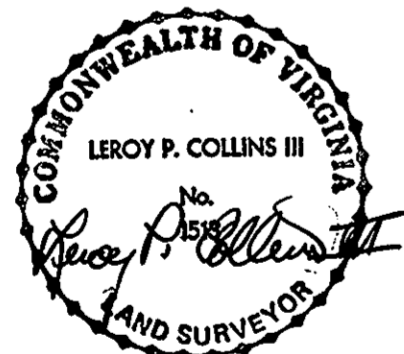
CURVE DATA						
NO	RADIUS	DELTA	TANGENT	LENGTH	CHORD	CHORD BEARING
1	25.00'	90°00'00"	25.00'	39.27'	35.36'	S27°54'10"E
2	25.00'	90°00'00"	25.00'	39.27'	35.36'	S62°05'50"W
3	25.00'	90°00'00"	25.00'	39.27'	35.36'	S73°19'38"W
4	25.00'	90°00'00"	25.00'	39.27'	35.36'	S16°40'22"W
5	100.00'	40°23'10"	36.78'	70.49'	69.04'	N86°54'15"E
6	150.00'	98°39'31"	174.57'	258.29'	227.54'	S57°46'04"W
7	50.00'	107°39'00"	68.38'	93.94'	80.72'	N12°53'10"E
8	50.00'	21°51'49"	9.66'	19.08'	18.96'	S19°22'13"W
9	60.00'	251°14'28"	-	263.10'	-	-
10	100.00'	17°11'50"	15.12'	30.01'	29.90'	S81°30'05"E
11	150.00'	17°11'50"	22.68'	45.02'	44.85'	N81°30'05"W
12	50.00'	62°57'52"	30.62'	54.95'	52.22'	S58°25'04"W
13	50.00'	24°37'12"	10.91'	21.49'	21.32'	N77°47'24"W
14	60.00'	267°35'03"	-	280.21'	-	-
15	50.00'	47°00'51"	21.75'	41.03'	39.89'	N66°23'35"E
16	50.00'	47°00'51"	21.75'	41.03'	39.89'	N66°35'35"W
17	60.00'	112°23'23"	89.61'	117.69'	99.71'	S80°55'09"E
18	60.00'	112°23'23"	89.61'	117.69'	99.71'	S80°43'09"W
19	200.00'	11°13'48"	19.66'	39.20'	39.14'	S67°17'16"E
20	150.00'	11°13'48"	14.75'	29.40'	29.35'	S67°17'16"E
21	300.00'	30°50'06"	82.73'	161.45'	159.51'	N12°54'35"E
22	350.00'	15°18'58"	47.06'	93.56'	93.28'	S20°40'09"W
23	50.00'	61°07'17"	29.52'	53.34'	50.85'	S43°34'19"E
24	60.00'	256°38'26"	-	268.75'	-	-
25	900.00'	01°52'12"	14.69'	29.38'	29.37'	N16°09'44"E
26	1000.00'	03°21'05"	29.25'	58.49'	58.48'	N15°25'18"E
27	150.00'	04°40'07"	6.11'	12.22'	12.22'	N87°45'57"W

LOT AREAS			
LOT	AREA (SQ.FT.)	LOT	AREA (SQ.FT.)
52	17,562	78	18,503
53	17,515	79	19,345
54	17,515	80	23,427
55	17,665	81	21,739
56	18,445	82	20,188
57	17,995	83	21,180
58	17,593	84	24,277
59	17,535	85	20,866
60	17,535	86	17,630
61	17,535	87	18,132
62	18,742	88	17,515
63	17,600	89	17,515
64	17,595	90	17,515
65	20,840	91	18,001
66	19,566	92	18,266
67	26,774	93	17,525
68	18,078	94	19,329
69	17,845	95	18,260
70	19,840	96	19,116
71	18,675	97	19,116
72	17,652	98	17,674
73	23,672	99	18,630
74	17,670	100	18,000
75	17,999	101	18,000
76	18,016	102	17,839
77	17,548	103	18,857

APPROVED:
YORK COUNTY BOARD OF SUPERVISORS

BY: *[Signature]*
PLAT APPROVING AGENT

DATE: *11/12/84*



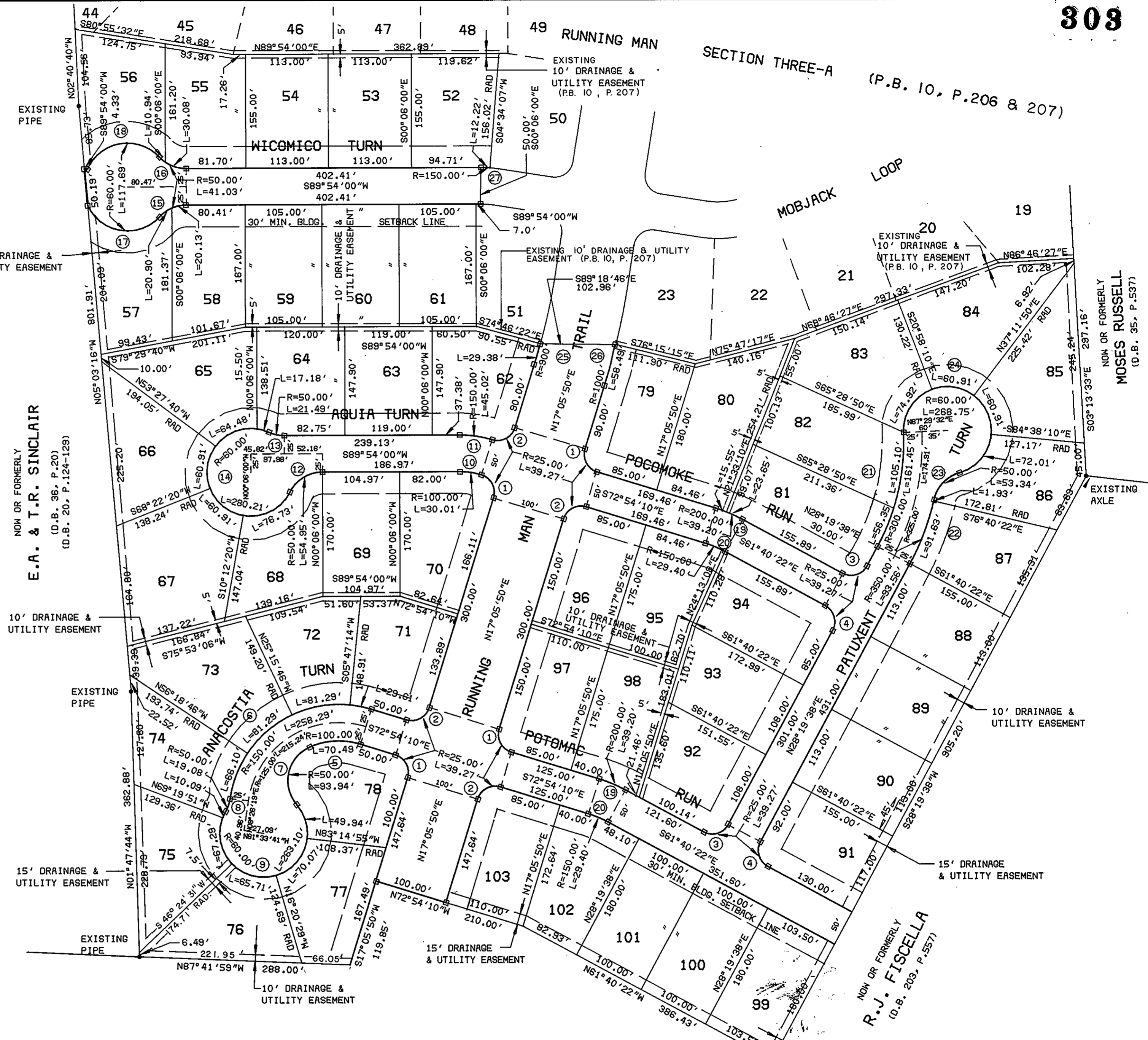
SEE SHEET 1 FOR NOTES AND CERTIFICATES

STATE OF VIRGINIA
COUNTY OF YORK
IN THE CLERK'S OFFICE OF THE CIRCUIT COURT FOR THE COUNTY OF YORK THE 12 DAY OF Nov, 1986, THIS MAP WAS PRESENTED, AND ADMITTED TO RECORD AS THE LAW DIRECTS IN PLAT BOOK 10, PAGE 303

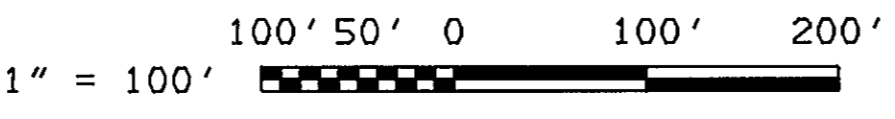
TESTE: *Edith M. Elliott*
CLERK

BY: *Nancy B. Henry DC.*

DB 459 page 226



NOW OR FORMERLY
RUNNING MAN LIMITED PARTNERSHIP
(D.B. 226, P. 272)



SUBDIVISION
OF
RUNNING MAN
SECTION THREE-B
BETHEL MAGISTERIAL DISTRICT
YORK COUNTY, VIRGINIA

SCALE: 1"=100' MAY 15, 1986

BALDWIN AND GREGG, LTD.
ENGINEERS - SURVEYORS - PLANNERS
NORFOLK, VIRGINIA