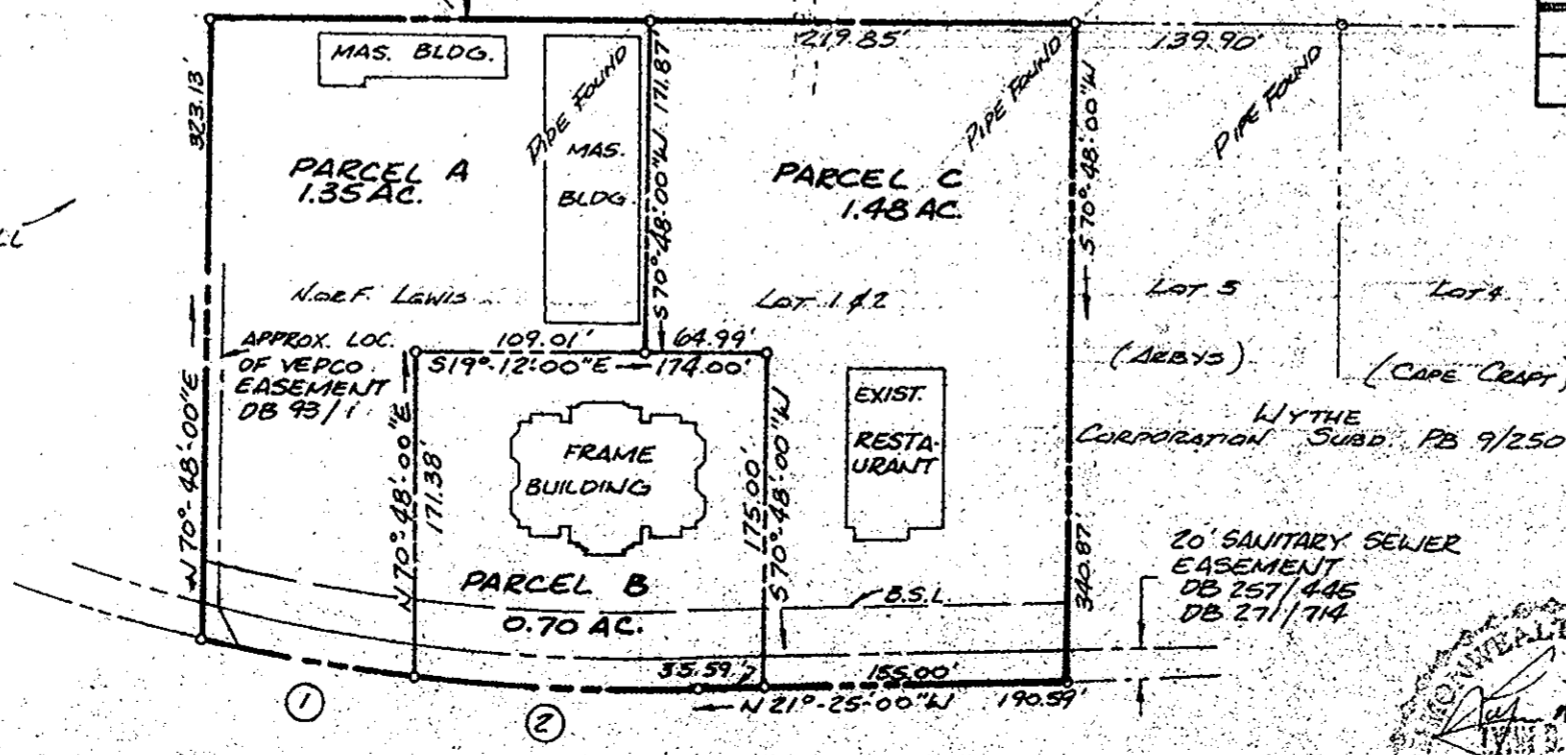


C&O RAILROAD

No	DELTA	RADIUS	TANGENT	ARC	CHORD	CHD. B'NG.
1	06°59'12"	995.16'	60.75'	121.35'	121.27'	N09°39'01"W
2	07°58'56"	995.16'	69.43'	138.53'	138.53'	N17°08'04"W

Filed in the Clerk's Office, Circuit Court, York Co., Va.
 the 18th day of February 1987
 Teste: Edith M. Ellison, Clerk
 1:55 P.M.
 Plat Book 10 PAGE 342
 REV. 11/2/87 - UPDATE - NO CHANGES
 108 470 page 674

DB 211/545	DB 308/755
215/755	311/229
272/378	78 9/235
DB 81/117	DB 812/142
DB 195/289	311/247
274/578	274/40
122/295	298/601
201/322	153/297
234/444	230/271
DB 57/225	DB 6/187
81/373	WB 37/408
DB 89/487	C&O TRACK MAP V.1-28



Route 60
 RICHMOND ROAD 80 R/W



A PLAT OF 18.03 AC. ±
 STANDING IN THE NAME OF
 SHANI CORP.
 BRITAIN DISTRICT, YORK CO., VIRGINIA
 1"=100' JAN. 7, 1987
 EVANS SURVEYING CO., P.C. WILLIAMSBURG, VA