

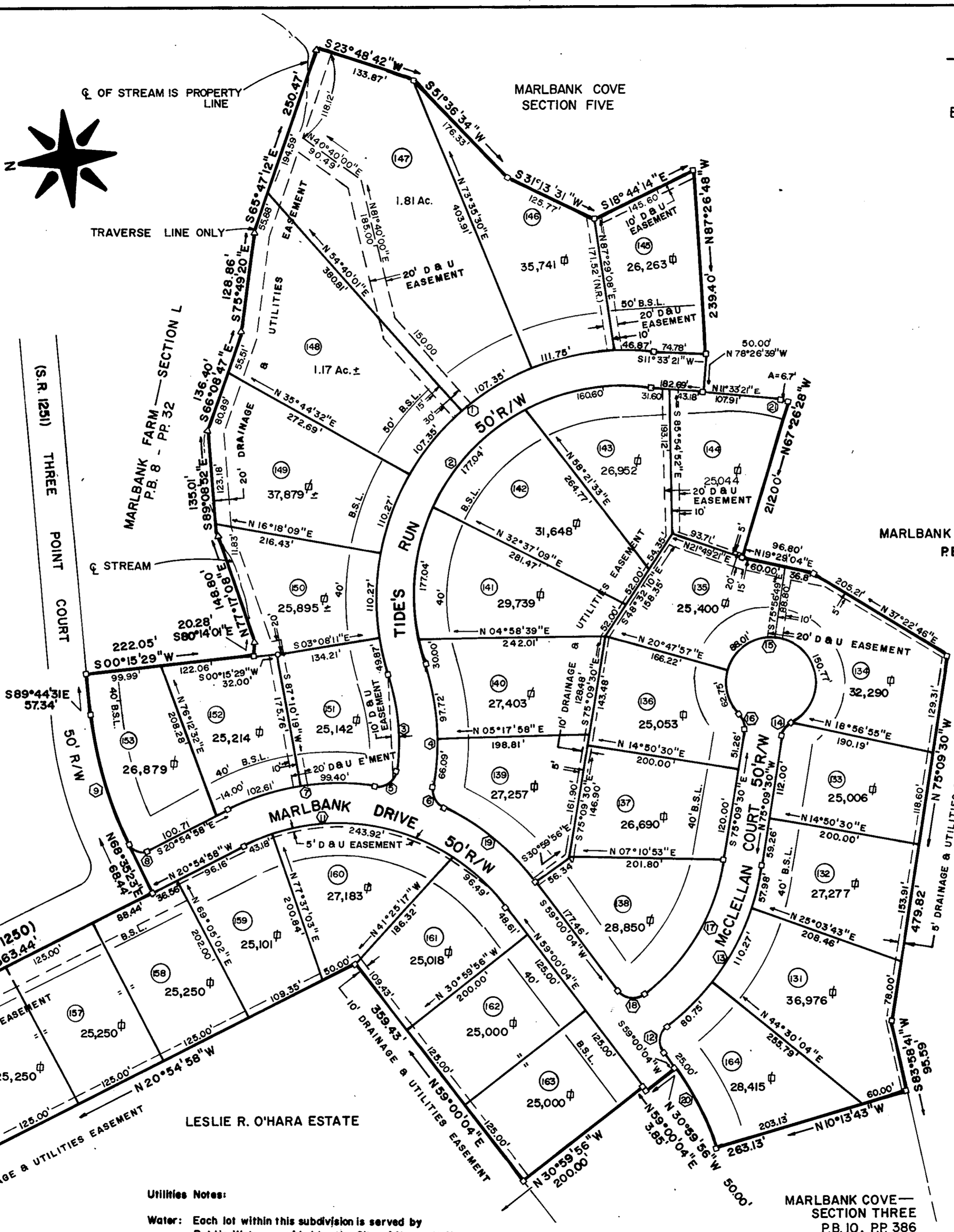
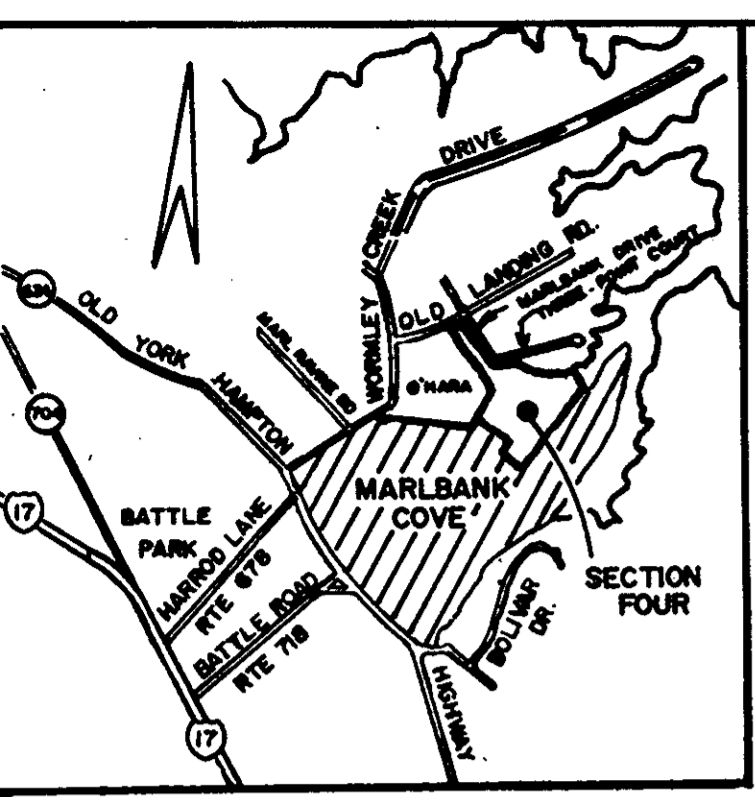
MARLBANK COVE

SECTION FOUR
COUNTY OF YORK, VIRGINIA

E. E. PAINE, INC. ENGINEERS · PLANNERS
707 GUM ROCK COURT · NEWPORT NEWS · VA
SCALE: 1" = 100' DATE: SEPTEMBER, 1987
Job No. 2064-4

CURVE DATA TABLE

NO.	DELTA	RADIUS	ARC	TANGENT	CHORD	CH. BEARING
1	113° 29' 03"	325.00'	843.72'	498.56'	543.54'	S 45° 11' 10" E
2	113° 29' 03"	275.00'	544.68'	419.32'	459.92'	S 45° 11' 10" E
3	26° 27' 23"	275.00'	126.98'	64.64'	125.86'	N 88° 42' 01" W
4	28° 52' 43"	325.00'	163.81'	83.68'	162.08'	S 87° 29' 19" E
5	90° 10' 36"	25.00'	39.35'	25.08'	35.41'	N 30° 23' 20" W
6	75° 42' 02"	25.00'	33.03'	19.43'	30.68'	S 69° 06' 02" W
7	35° 36' 39"	325.00'	202.00'	104.38'	198.76'	N 03° 06' 40" W
8	89° 30' 21"	18.60'	29.07'	18.44'	26.19'	N 23° 49' 56" E
9	21° 40' 06"	462.03'	174.73'	88.42'	173.69'	N 79° 25' 26" E
10	90° 00' 00"	25.00'	39.27'	25.00'	35.36'	N 65° 54' 58" W
11	79° 55' 11"	275.00'	383.99'	230.42'	353.24'	N 19° 02' 37" E
12	89° 44' 26"	25.00'	39.16'	24.89'	35.26'	N 79° 25' 26" E
13	43° 53' 44"	325.00'	248.99'	130.96'	242.95'	S 53° 15' 48" E
14	53° 58' 32"	25.00'	23.55'	12.73'	22.69'	N 48° 10' 26" W
15	287° 56' 14"	80.00'	301.53'	43.64'	70.59'	S 14° 50' 30" W
16	53° 58' 32"	25.00'	23.55'	12.73'	22.69'	N 77° 51' 26" E
17	43° 47' 24"	275.00'	210.18'	110.52'	205.10'	S 53° 15' 48" E
18	90° 21' 47"	25.00'	39.43'	25.16'	35.47'	S 13° 48' 48" W
19	27° 45' 12"	325.00'	157.42'	80.29'	155.89'	N 45° 07' 37" E
20	20° 46' 09"	325.00'	117.81'	59.56'	117.17'	N 69° 23' 13" E
21	1° 23' 46"	275.00'	6.70'	3.35'	6.70'	S 12° 18' 10" W



MARLBANK COVE — SECTION TWO
P.B. 10, PP. 225-226

TRAVERSE LINES SHOWN THUS:

EASEMENTS SHOWN THUS ARE HEREBY CONVEYED TO THE COUNTY OF YORK FOR DRAINAGE AND UTILITIES:

MINIMUM BUILDING SETBACK LINE SHOWN THUS:

CONCRETE MONUMENT SHOWN THUS:

IRON PIPES SHOWN THUS:

APPROVED
YORK COUNTY BOARD OF SUPERVISORS
BY:
PLAT APPROVING AGENT
DATE: 9/2/87

State of Virginia
County of York
In the Clerk's Office of the Circuit Court for the County of York the 25th day of September 1987 this map was presented and admitted to record as the law directs in Plat Book 10, Page 402. 7:08
Teste:
Clerk
By:

The platting of the land shown hereon is with the free consent and in accordance with the desire of the undersigned owners, proprietors, and trustees, if any, MARLBANK COVE, a Virginia Limited Partnership

Dois I. Rosser, Jr. General Partner

I,
do hereby certify that the above named persons whose names are assigned to the foregoing writing have acknowledged the same before me in my City and state aforesaid.
Given under my hand this 15th day of Aug, 1987.

Notary Public
My commission expires 10-13-89.

To the best of my knowledge and belief, all the requirements as set forth in the ordinance for approving plats of subdivision in the County of York, Virginia have been complied with, including a closure of not less than 1/10,000'. This is to certify that the land embraced in this subdivision is in the name of MARLBANK COVE, a Virginia Limited Partnership, and was acquired from Lucy H. O'Hara and James M. O'Hara by deed dated Aug. 21, 1984, and duly recorded in the Clerk's Office of the Circuit Court of the County of York, Virginia, in Deed Book 402, Page 594. I certify that monuments as shown on this plat will be set on or before Oct 31 1987.



E. E. PAINE, P.E.

Utilities Notes:
Water: Each lot within this subdivision is served by Public Water provided by the City of Newport News, Virginia.
Sewer: Each lot within this subdivision is served by Public Sewer provided by the County of York, Virginia.

AREA WITHIN LOTS 23.19 AC.±
AREA WITHIN RIGHT-OF-WAY 2.73 AC.
TOTAL SUBDIVIDED AREA 25.92 AC.±

MARLBANK COVE — SECTION THREE
P.B. 10, PP. 386