

# MARLBANK COVE

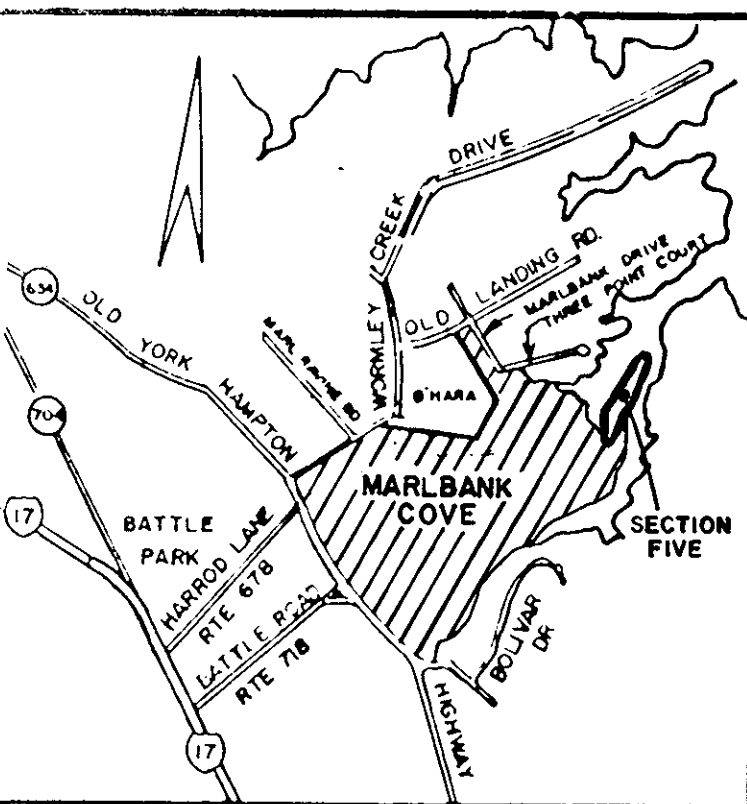
## SECTION FIVE

COUNTY OF YORK, VIRGINIA

E. E. PAINE, INC.

707 GUM ROCK CT., NEWPORT NEWS, VIRGINIA

SCALE: 1" = 100' DATE: FEBRUARY 25, 1986  
REVISED: OCTOBER 14, 1987



VICINITY MAP  
1" = 2000'

The platting of the land shown herein is with the free consent and in accordance with the desire of the undersigned owners, proprietors, and trustees, if any.

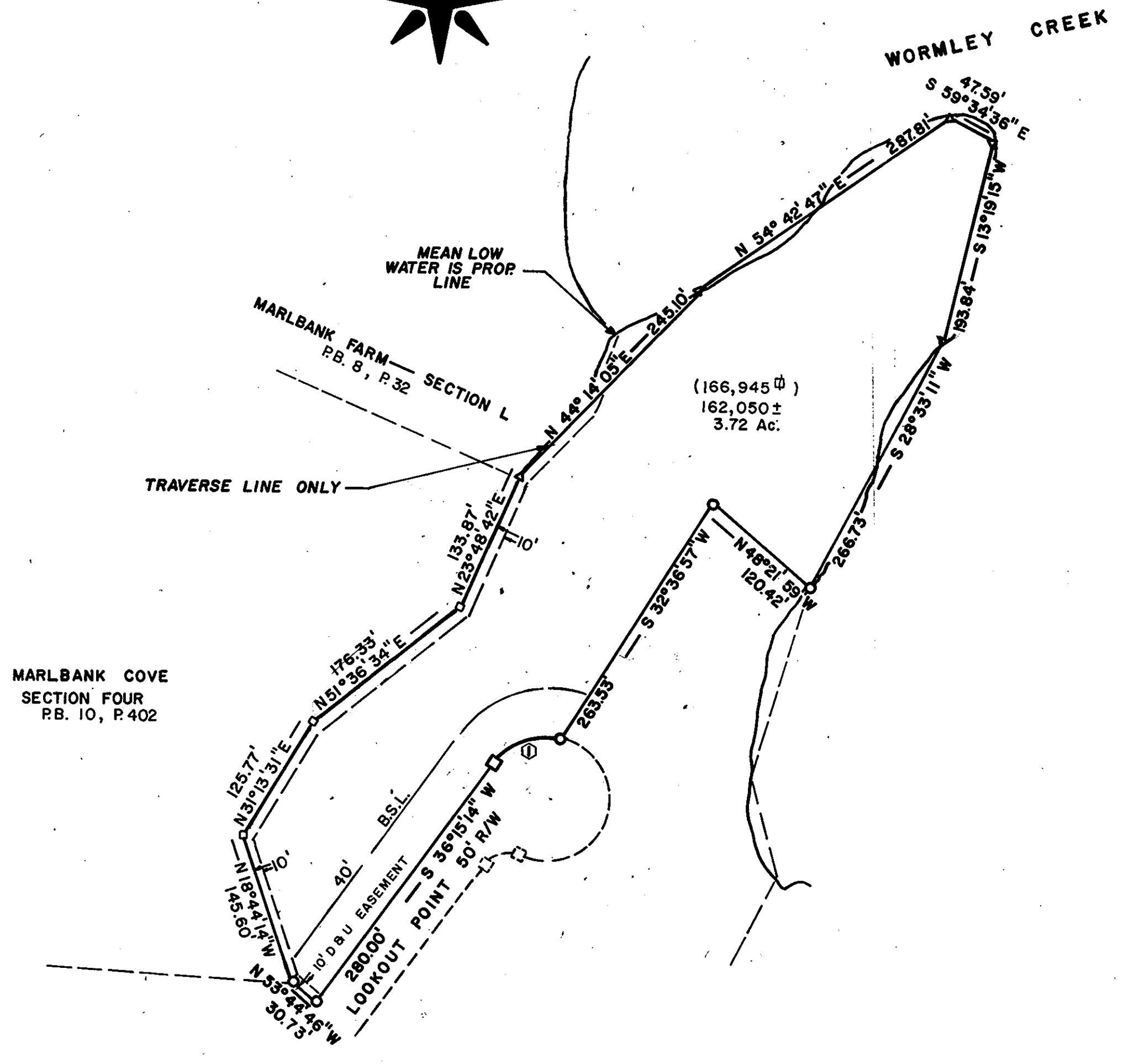
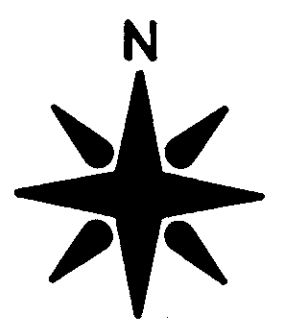
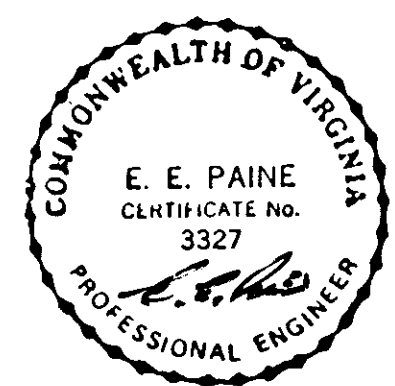
MARLBANK COVE, a Virginia Limited Partnership  
*Dois I. Rosser, Jr.*  
Dois I. Rosser, Jr. General Partner

I, *Giving B. Gray*, a Notary Public in and for the City of *Hampton* State of *Virginia* do hereby certify that the above named persons whose names are assigned to the foregoing writing have acknowledged the same before me in my *City* and state aforesaid.

Given under my hand this *15th* day of *Aug*, 1987  
*Giving B. Gray*  
Notary Public  
My commission expires *6-13-89*

To the best of my knowledge and belief, all the requirements as set forth in the ordinance for approving plats of subdivision in the County of York, Virginia have been complied with, including a closure of not less than 1/10,000. This is to certify that the land embraced in this subdivision is in the name of MARLBANK COVE, a Virginia Limited Partnership, and was acquired from Lucy H. O'Hara and James M. O'Hara by deed dated Aug. 21, 1984, and duly recorded in the Clerk's Office of the Circuit Court of the County of York, Virginia, in Deed Book 402, Page 594. I certify that monuments as shown on this plat will be set on or before Oct 31, 1987

*E. E. Paine*  
E. E. PAINE P.E.



MARLBANK COVE SECTION FOUR  
P.B. 10, P.402

MARLBANK COVE — SECTION TWO  
P.B. 10, PP. 225-226

- NOTE: 1 (DIST) IS THE DISTANCE FROM THE TRAVERSE LINE TO  $\xi$  OF THE STREAM.  
2 (AREA) REPRESENTS THE LOT AREA WITHIN THE TRAVERSE LINE.  
3  $\pm$  AREA IS TOTAL LOT AREA TO THE  $\xi$  OF THE STREAM.  
4. AREA  $\square$  INDICATES THE LOT AREA.

Traverse Lines Shown Thus

Concrete Monument Shown Thus

Iron Pipe Shown Thus

EASEMENTS SHOWN THUS ARE HEREBY CONVEYED TO THE COUNTY OF YORK FOR DRAINAGE & UTILITIES.

40' Minimum Building Setback

40' B.S.L.

YORK COUNTY, VIRGINIA

APPROVED

YORK COUNTY BOARD OF SUPERVISORS

BY *Richardson*  
PLAT APPROVING AGENT

DATE *Oct. 28, 1987*

State of Virginia  
County of York  
In the Clerk's Office of the Circuit Court for the County of York the *29th* day of *October*, 1987, this map was presented and admitted to record as the law directs in Plat Book 10, Page 418.

Teste: *Edith M. Elliott, Clerk*  
Clerk

By: *Carol Rosselmeier, D.C.*  
9/10/87

NO	DELTA	RADIUS	TANGENT	ARC	CHORD	CH. BEARING
1	67°53'18"	60.00	40.39	71.10	67.00	S70°11'48" W

Utilities Notes:  
Water: Each lot within this subdivision is served by Public Water provided by the City of Newport News, Virginia.  
Sewer: Each lot within this subdivision is served by Public Sewer provided by the County of York, Virginia.