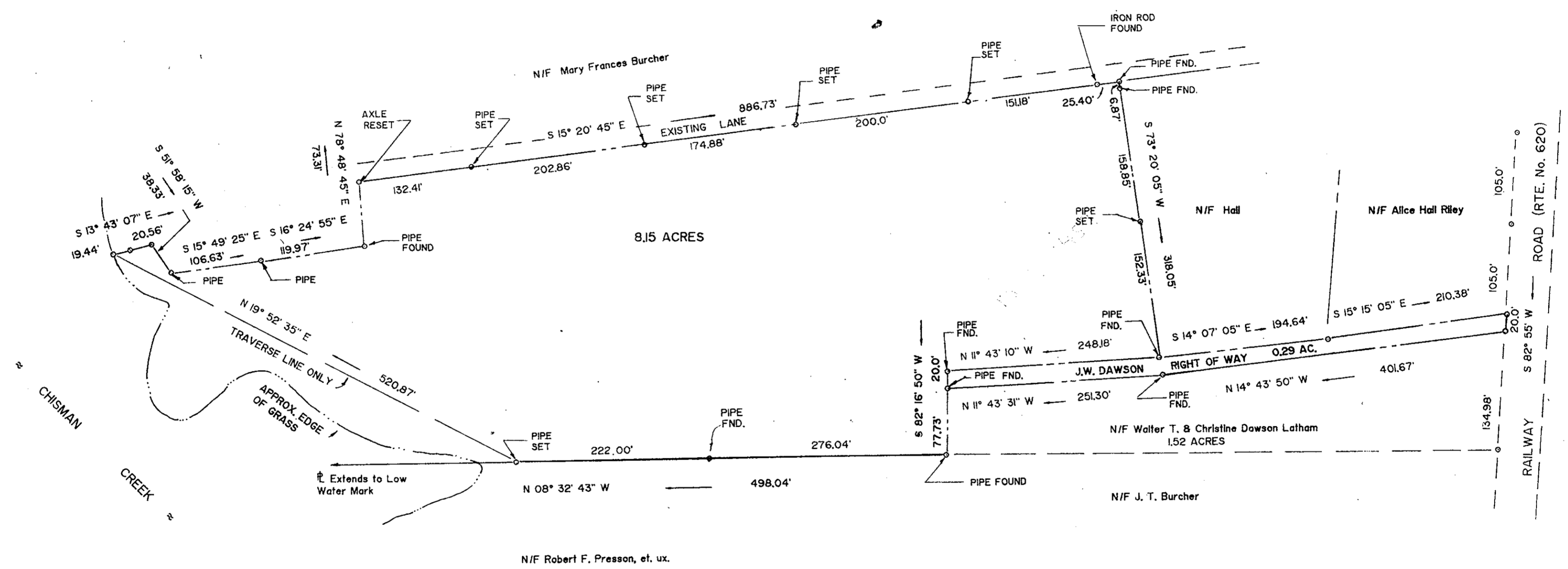
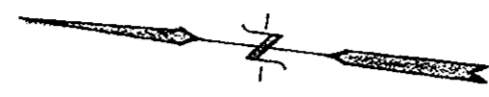


VICINITY SKETCH SCALE: 1" = 2000'



PLAT BOOK No. 10 Page 459

Filed in the Clerk's Office, Circuit Court, York Co., Va. the 21st day of January 1988

Teste: Edith M. Elliott, Clerk
Catherine Berley D.C.



Andrew Becouvarakis, C. L. S.

PLAT OF THE PROPERTY OF J. W. DAWSON
PARCEL OF LAND CONTAINING 8.15 AC. LOCATED OFF RAILWAY ROAD IN THE COUNTY OF YORK, VIRGINIA
BECOVARAKIS AND ASSOC. LAND SURVEYING HAMPTON, VIRGINIA
Scale: 1" = 100.0' F. B. Pg. <u> </u> Date: NOV. 13, 1987