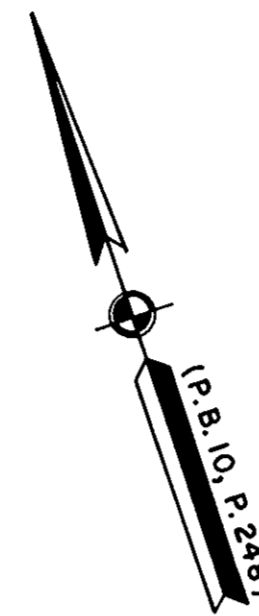
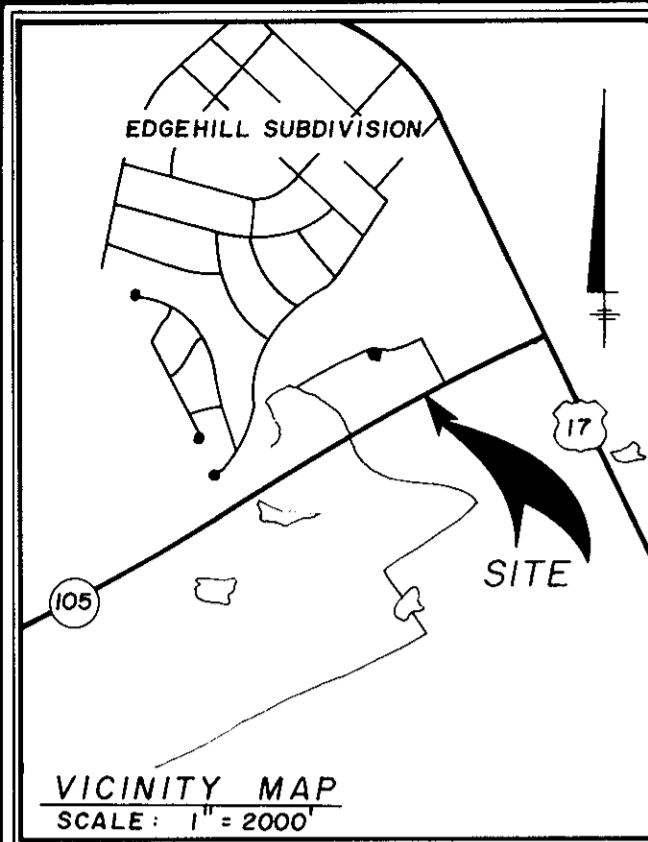


SHEET 2 OF 2
BURNT BRIDGE RUN CONDOMINIUM
 PHASE FIVE
 GRAFTON DISTRICT COUNTY OF YORK, VIRGINIA
 SCALE: 1" = 20' DECEMBER 7, 1987



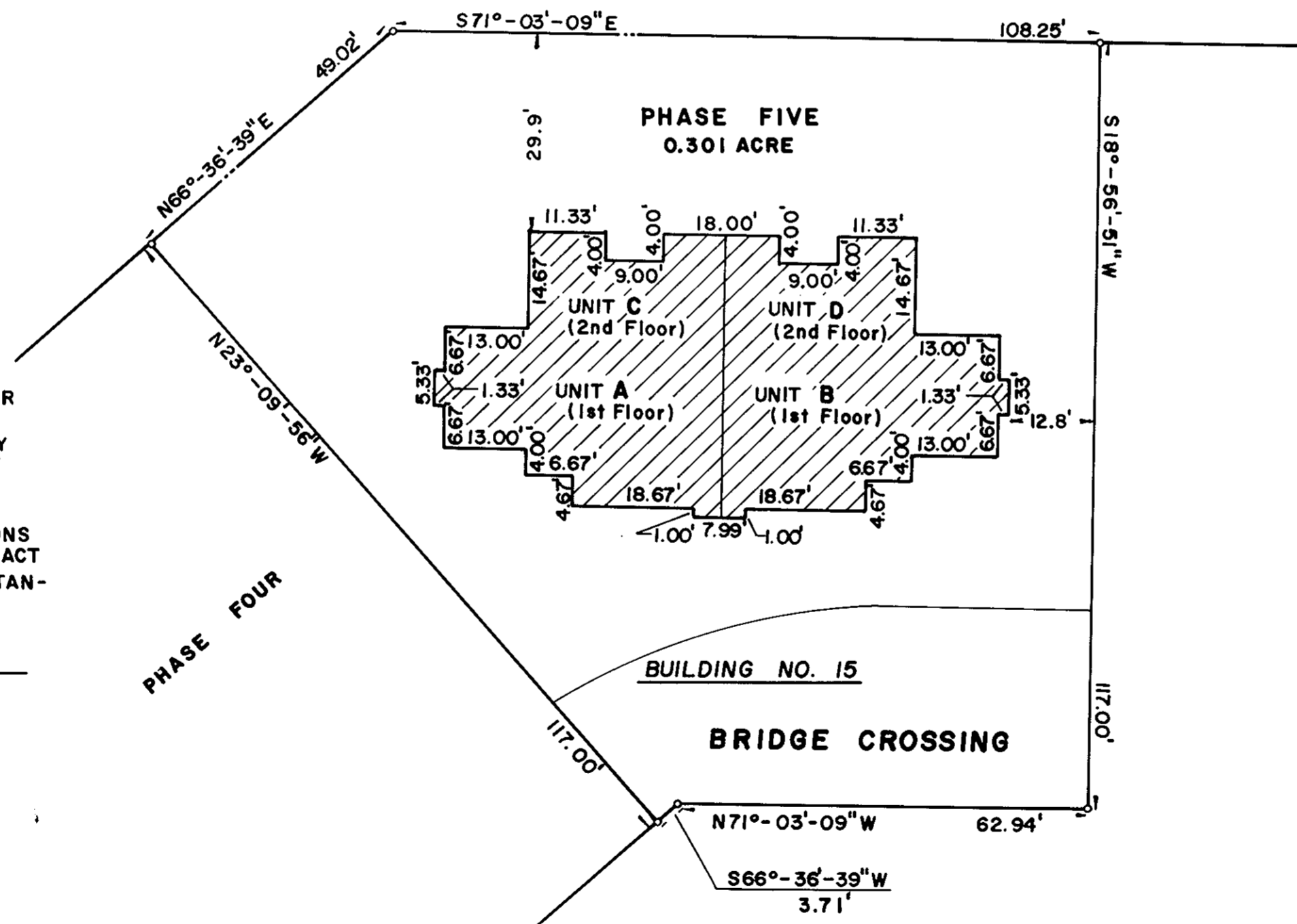
THE SIRINE GROUP, LTD.
 SURVEYORS • ENGINEERS • PLANNERS
 P.O. BOX 450, ROUTE 17
 WHITE MARSH, VIRGINIA
 23183







NOTES:

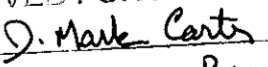
1. ALL BUILDING DIMENSIONS SHOWN HEREON ARE EXTERIOR DIMENSIONS AND ARE IN FEET.
2. THE DESIGNATION OF FEE TITLE AREA IS SUPERSEDED BY THE DECLARATION AND IS NOT INTENDED TO IMPLY THAT EXTERIOR WALLS, BEARING WALLS AND OTHER COMMON ELEMENTS ARE FEE TITLE AREA.
3. I CERTIFY THAT THIS PLAT COMPLIES WITH THE PROVISIONS OF SUBSECTION (a) OF §55-79.58 OF THE CONDOMINIUM ACT AND THAT ALL UNITS DEPICTED HEREON HAVE BEEN SUBSTANTIALLY COMPLETED.

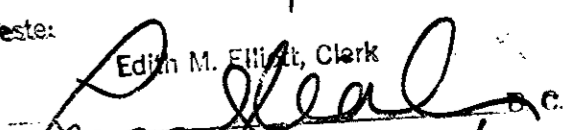
SIGNED: 
 C. E. NEWBAKER III



LEGEND

-  FEE TITLE AREA
 -  COMMON ELEMENTS
 -  LIMITED COMMON ELEMENTS
 -  LIMIT OF AREA OR ELEMENTS
- UNITS A AND B ARE UNIT TYPE (4)
 UNITS C AND D ARE UNIT TYPE (5)

YORK COUNTY
 APPROVED FOR RECORDATION
 BY: 
 TITLE: DIRECTOR OF PLANNING
 DATE: APRIL 18, 1988

Filed in the Clerk's Office, Circuit Court, York Co., Va.
 the 10th day of May 1988
 Teste: 
 Edith M. Elliott, Clerk
 Plat Book 10 Page 524