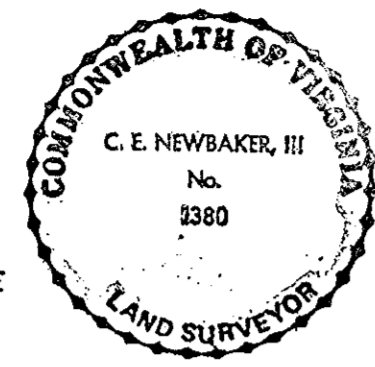
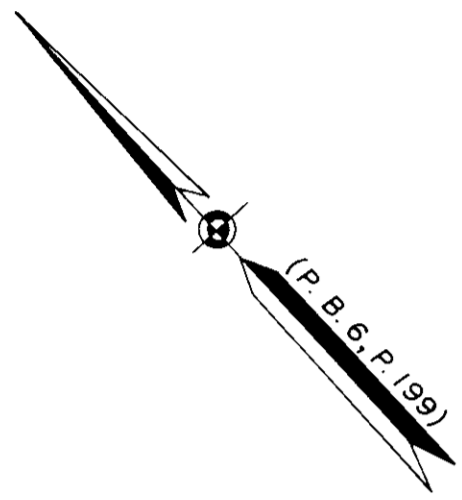


THE UNDERSIGNED CERTIFIES THAT THIS PLAT IS ACCURATE AND COMPLIES WITH THE PROVISIONS OF THE CODE OF VIRGINIA SECTION 55-79.58 (a) AND ALL UNITS DEPICTED HEREON HAVE BEEN SUBSTANTIALLY COMPLETED.

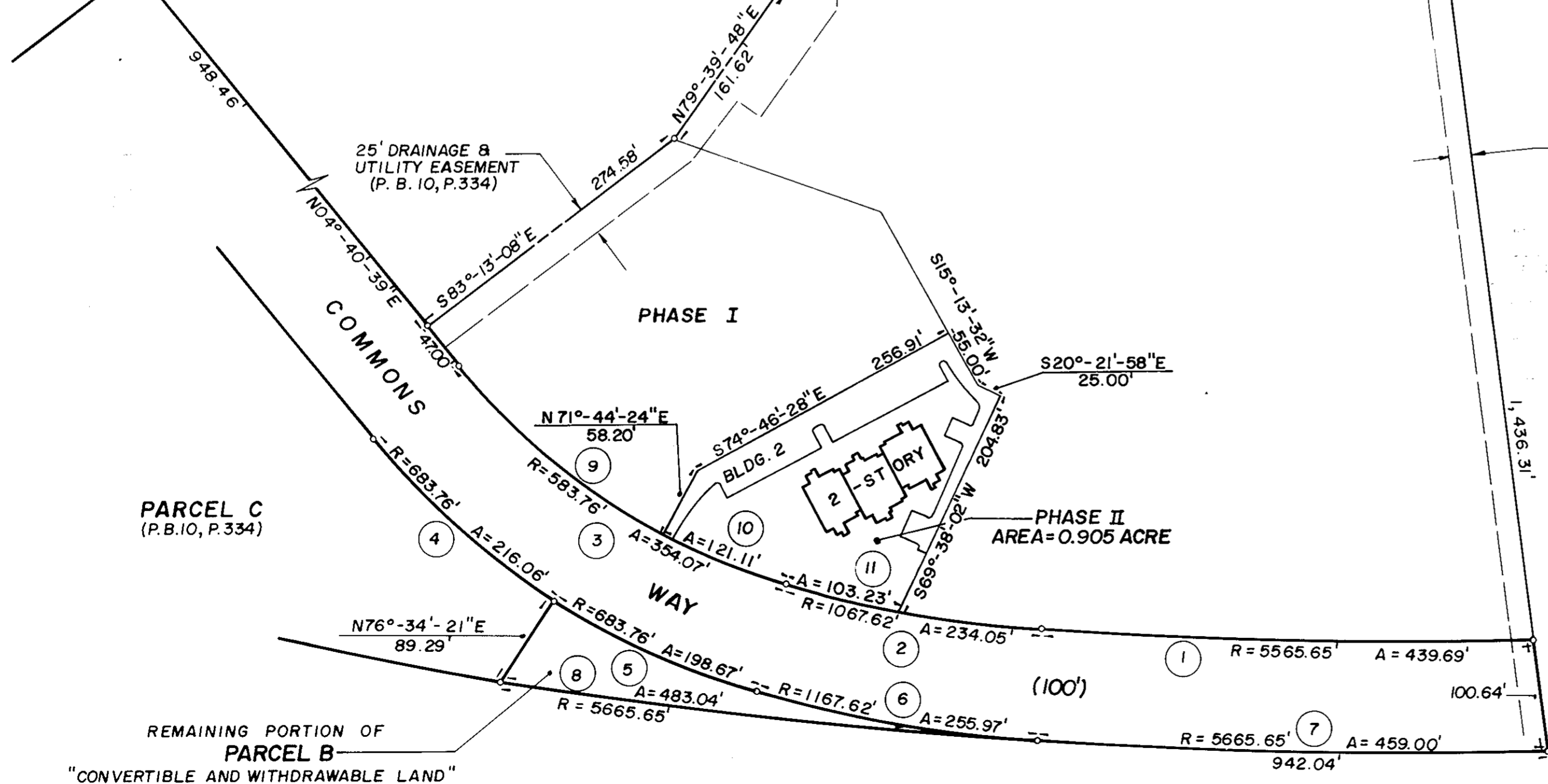
SIGNED: *C. E. Newbaker III* DATE: 5/16/88
 C. E. NEWBAKER III, L. S.



NOTES:
 I. ALL BUILDING DIMENSIONS SHOWN HEREON ARE EXTERIOR DIMENSIONS AND ARE IN FEET.
 PARCEL B = 17.630 ACRES



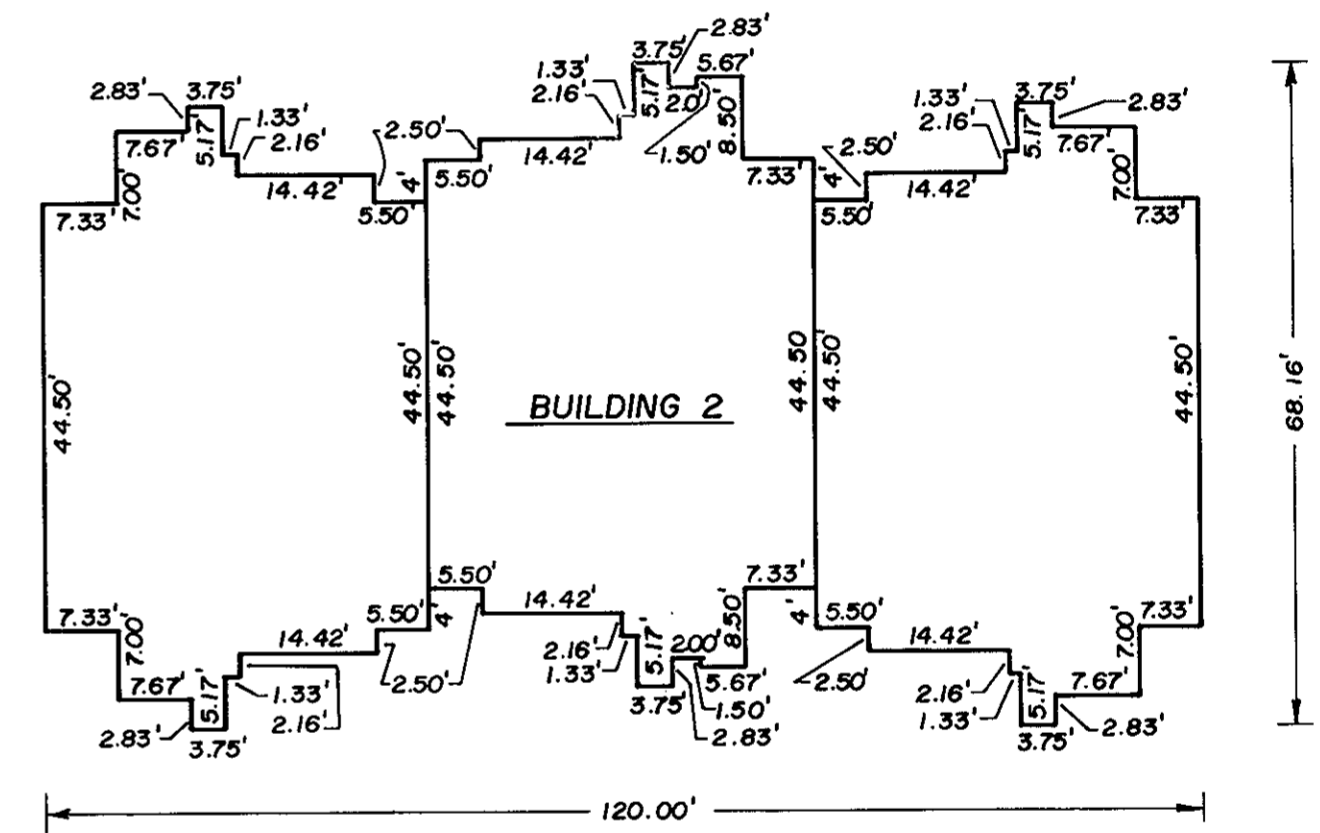
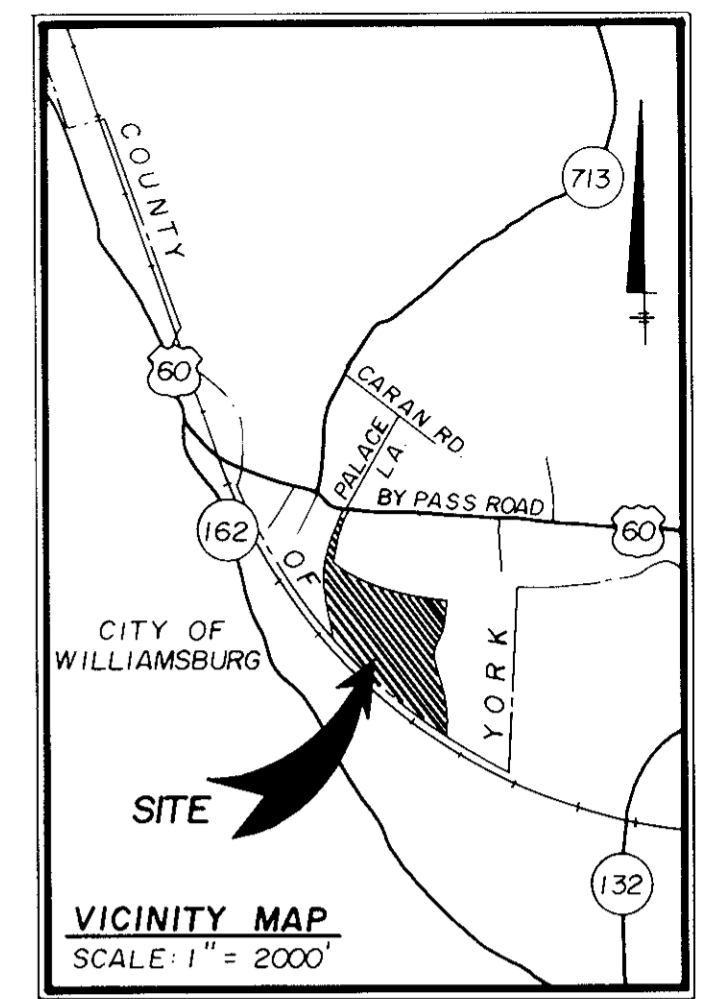
U.S. ROUTE 60 BY PASS ROAD
 (VARIABLE WIDTH)



STATE OF VIRGINIA
 COUNTY OF YORK

IN THE CLERK'S OFFICE OF THE CIRCUIT COURT FOR THE COUNTY OF YORK THE 20th DAY OF June, 1988 THIS MAP WAS PRESENTED AND ADMITTED TO RECORD AS THE LAW DIRECTS IN PLAT BOOK 10, PAGE 538.

TESTE: EDITH M. ELLIOTT, CLERK
 CLERK
 BY: *[Signature]*



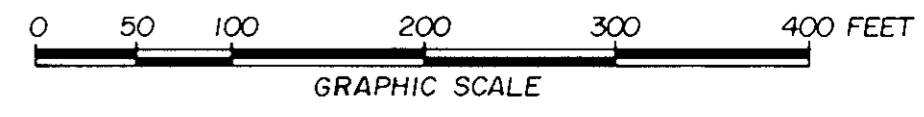
NOW OR FORMERLY
 C. C. CASEY SONS
 (P. B. 8, P. 107)

20' DRAINAGE & UTILITY EASEMENT (P. B. 10, P. 334)

2-Mark Center
6-20-88

CURVE DATA TABLE				
NO.	RADIUS	DELTA	TANGENT	ARC
1	5565.65'	04°-31'-35"	219.96'	439.69'
2	1067.62'	12°-33'-39"	117.50'	234.05'
3	583.76'	34°-45'-06"	182.67'	354.07'
4	683.76'	18°-06'-16"	108.94'	216.06'
5	683.76'	16°-38'-48"	100.03'	198.67'
6	1167.62'	12°-33'-39"	128.50'	255.97'
7	5665.65'	04°-38'-30"	229.62'	459.00'
8	5665.65'	04°-53'-06"	241.67'	483.04'
9	583.76'	22°-51'-55"	118.05'	232.97'
10	583.76'	11°-53'-11"	60.77'	121.11'
11	1067.62'	05°-32'-25"	51.66'	103.23'

SHEET 1 OF 4 Exhibit C
 SUPPLEMENTAL PLAT OF
WILLIAMSBURG COMMONS CONDOMINIUMS
 FOR
WILLIAMSBURG COMMONS, INC.
 A VIRGINIA CORPORATION
 BRUTON DISTRICT COUNTY OF YORK, VIRGINIA
 SCALE: 1" = 100' JANUARY 15, 1988



THE SIRINE GROUP, LTD.
 SURVEYORS • ENGINEERS • PLANNERS
 P.O. BOX 450, ROUTE 17
 WHITE MARSH, VIRGINIA
 23183