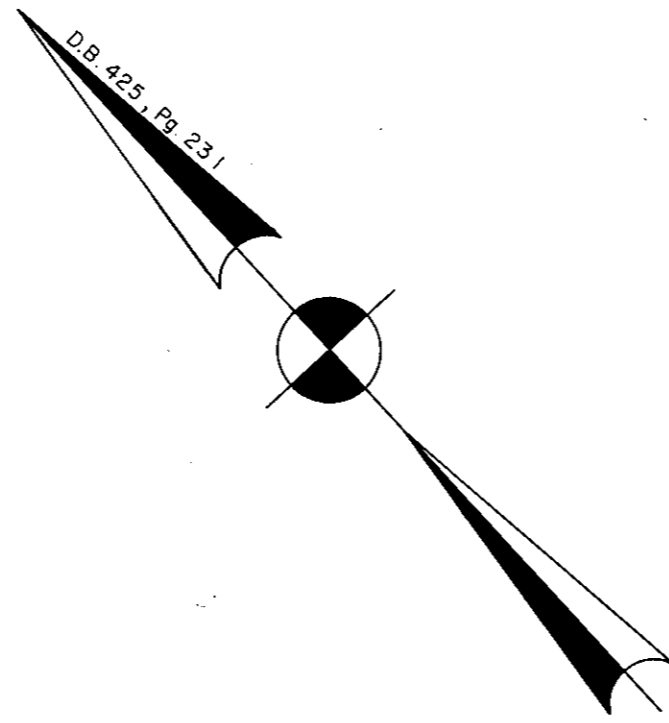


VICINITY MAP
SCALE: 1"=2000

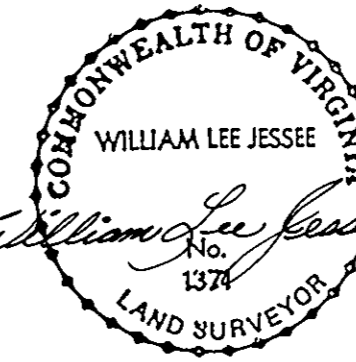


PLAT OF
OF
THE PROPERTY OF
CARL J. WILLIFORD et ux
LOCATED IN
BURTON DISTRICT
YORK COUNTY, VIRGINIA

ta
Talbot & Associates, Ltd.
Architects, Engineers, Planners, Surveyors, Landscape Architects
100 Landmark Square, Virginia Beach, Va. 23452
739 Thimble Shoals Blvd., Suite 1006, Newport News, Va. 23606

MAY 24, 1988 SCALE: 1"=100'
SHEET 1 OF 1

I HEREBY CERTIFY THAT THIS SURVEY IS CORRECT AND WAS MADE IN ACCORDANCE WITH PHYSICAL EVIDENCE FOUND IN THE FIELD AND RECORDED INFORMATION. THERE ARE NO ENCROACHMENTS EXCEPT AS SHOWN.



SIGNED: *William Lee Jesse* DATE: 5-31-88
WILLIAM LEE JESSEE, C.L.S.

Now or Formerly
JOHN WILL. HOLMES, et ux
D.B. 193, Pg. 495

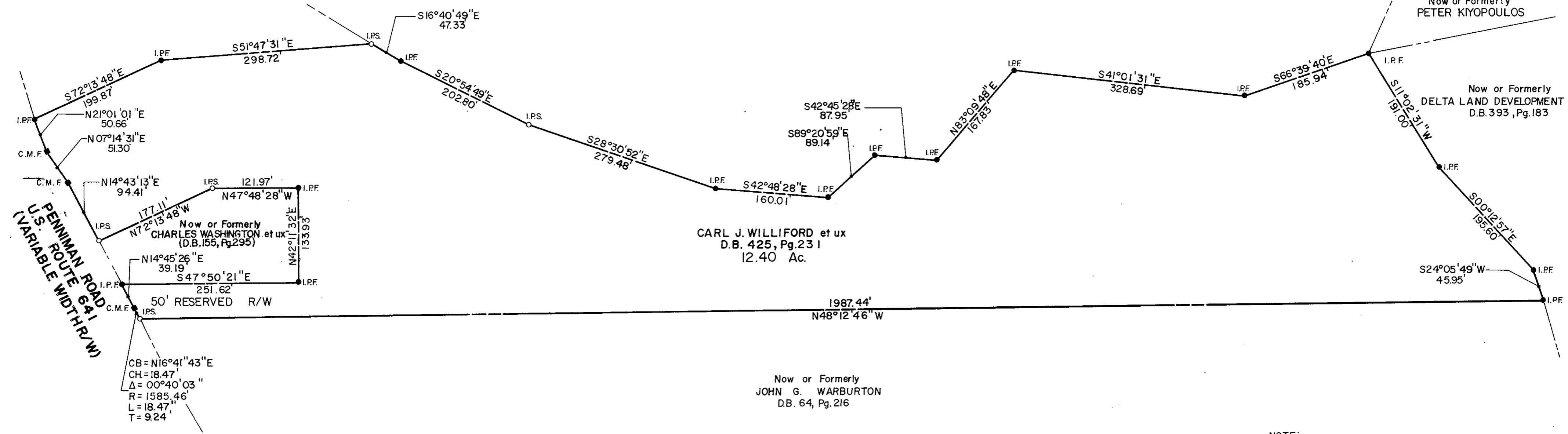
Now or Formerly
ALEXANDER WASHINGTON JONES, et als
D.B. 189, Pg. 83

Now or Formerly
PETER KIYOPOULOS

Now or Formerly
DELTA LAND DEVELOPMENT CORP.
D.B. 393, Pg. 183

CARL J. WILLIFORD et ux
D.B. 425, Pg. 231
12.40 Ac.

Now or Formerly
JOHN G. WARBURTON
D.B. 64, Pg. 216



- NOTE:
 ■ C.M.F. = CONCRETE MONUMENT FOUND
 ● I.P.F. = IRON PIPE FOUND
 ○ I.P.S. = IRON PIPE SET

Plat Book No. 10 Page 557

Filed in the Clerk's Office, Circuit Court, York Co., Va.
the 14th day of July 1988

Teste:
Edith M. Elliott, Clerk
D.C.
9.26 A.M.

