

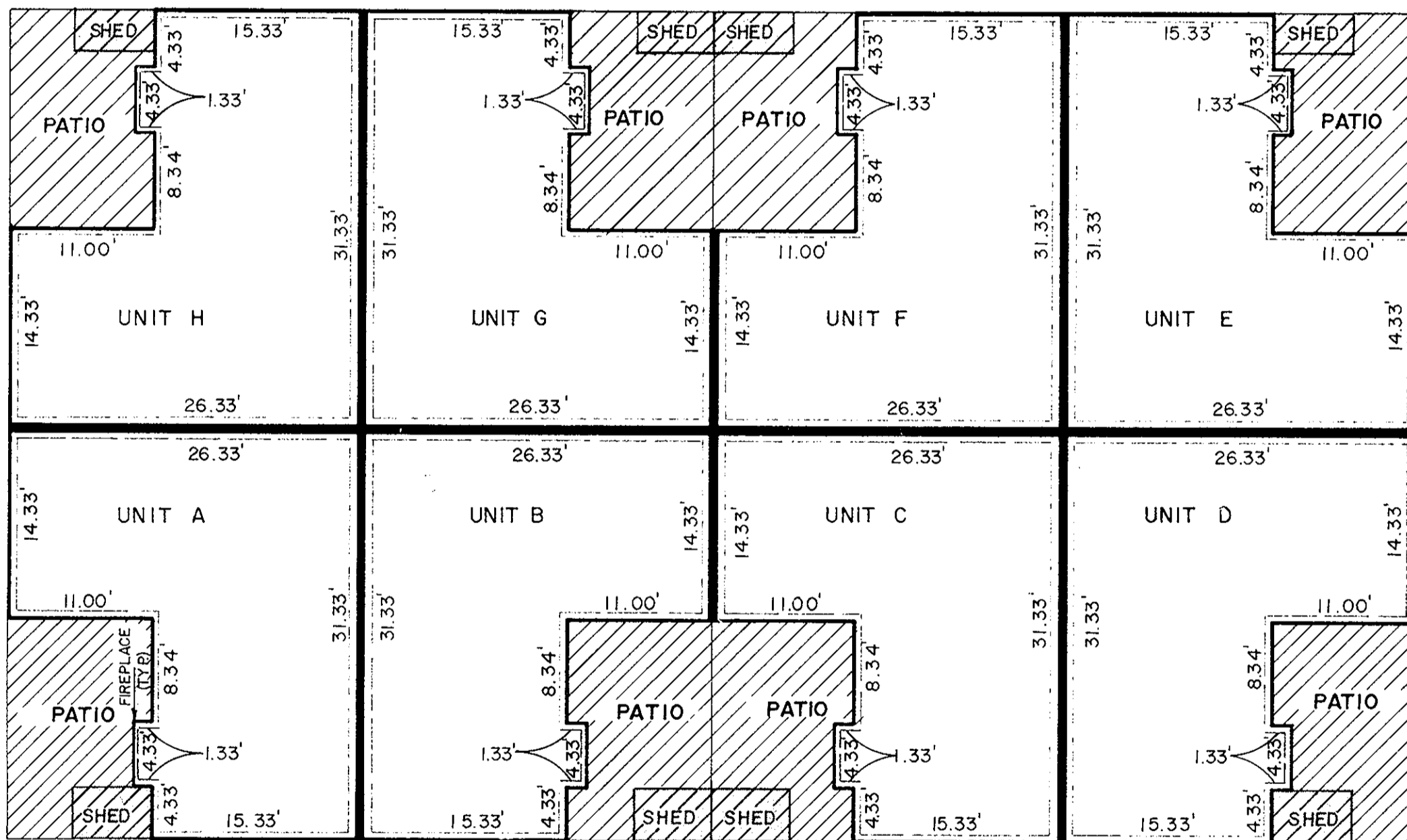
YORKSHIRE DOWNS
CONDOMINIUM
UNIT DIMENSION PLAN



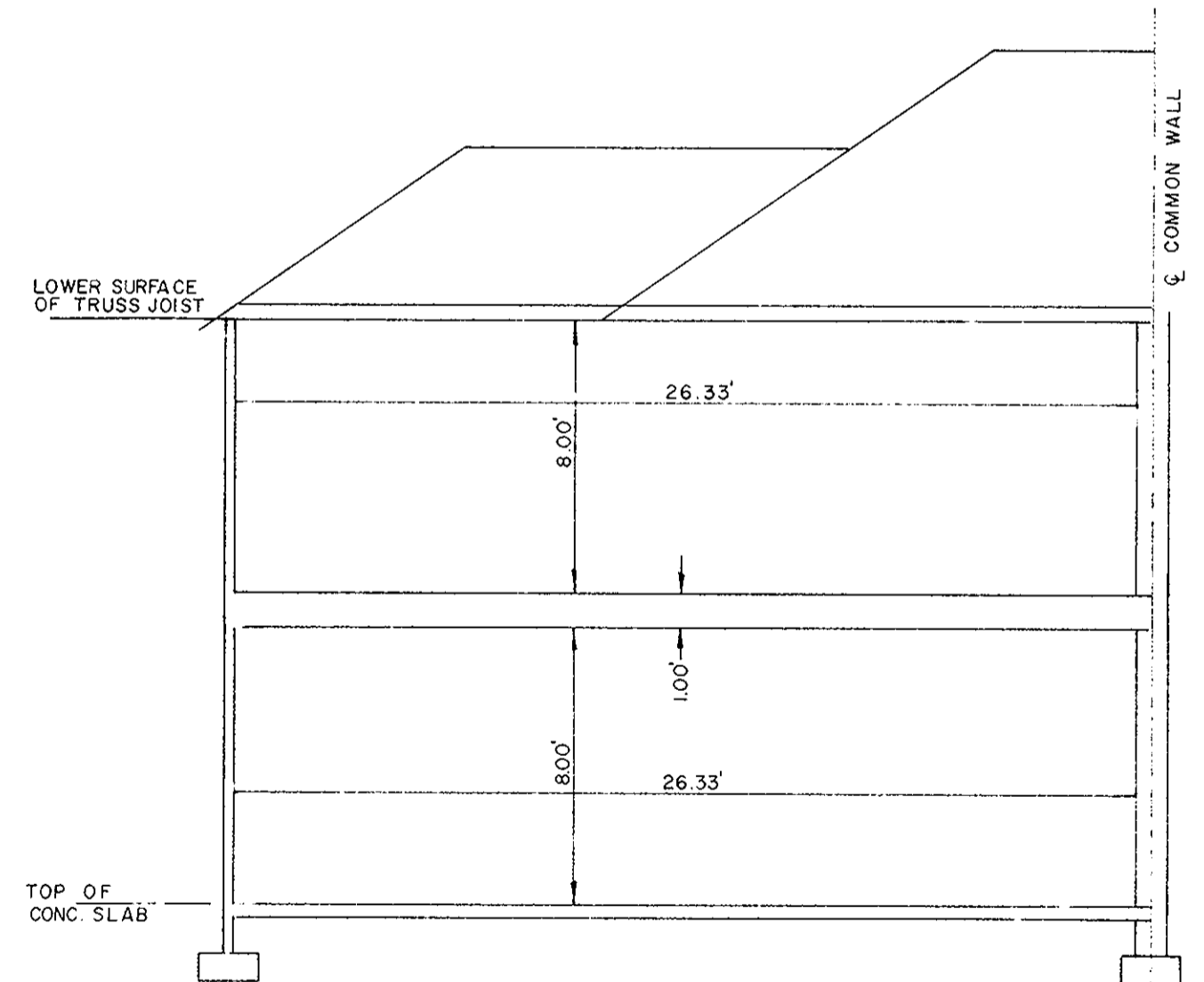
SCALE: AS SHOWN

SHEET 3 OF 3

NOTE:
SECTIONAL VIEWS OF UNITS AND ALL UNIT DIMENSIONS WERE OBTAINED FROM THE ARCHITECTURAL PLANS OF RICHARD LEE GRIMSTEAD, A REGISTERED ARCHITECT WITH THE COMMONWEALTH OF VIRGINIA.



TYPICAL UNIT PLAN
SCALE: 1" = 10'



TYPICAL SECTION
SCALE: 1" = 5'

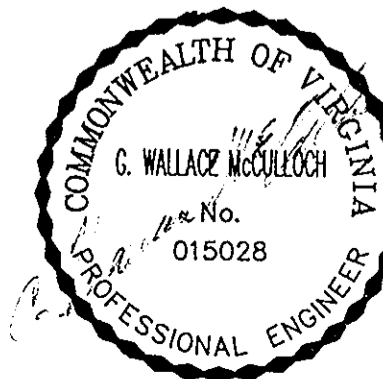
Plot Book No. 10 Page 597

Filed in the Clerk's Office, Circuit Court, York Co., Va.
the 20th day of October 1988

Teste:
Edith M. Elliott, Clerk
Karen D. Kelly Watkins D.C.

LIMITED COMMON ELEMENT

NOTE:
ALL UNITS ARE SAME UNIT TYPE AND DEMISIONS.



I, G. WALLACE McCULLOCH, A DULY REGISTERED ENGINEER, DO HEREBY CERTIFY THAT THIS DRAWING IS ACCURATE (WITHIN NORMAL TOLERANCES) AND COMPLIES WITH SECTION 55-79.58(b) OF THE CONDOMINIUM ACT AND THAT THE UNITS SHOWN HEREON ARE SUBSTANTIALLY COMPLETED IN ACCORDANCE HEREWITH.

G. Wallace McCulloch, DATE 10/20/88

PROJECT NO: 872217
FILE NO: 872217