

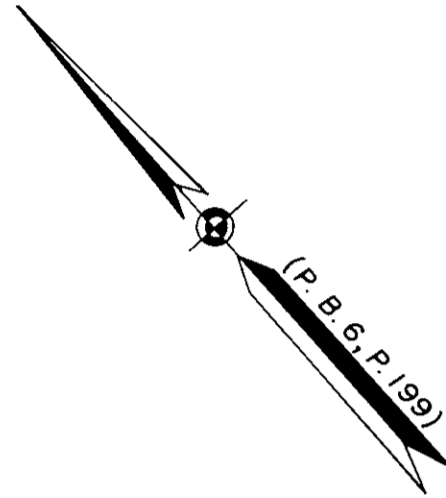
THE UNDERSIGNED CERTIFIES THAT THIS PLAT IS ACCURATE AND COMPLIES WITH THE PROVISIONS OF THE CODE OF VIRGINIA SECTION 55-79.58 (a) AND ALL UNITS DEPICTED HEREON HAVE BEEN SUBSTANTIALLY COMPLETED.

SIGNED: C. E. Newbaker III DATE: 8/18/88
 C. E. NEWBAKER III, L.S.



NOTES:
 I. ALL BUILDING DIMENSIONS SHOWN HEREON ARE EXTERIOR DIMENSIONS AND ARE IN FEET.

PARCEL B = 17.630 ACRES



U.S. ROUTE 60 BY PASS ROAD
 (VARIABLE WIDTH)

PARCEL C
 (P.B. 10, P. 334)

PARCEL A
 (P.B. 10, P. 334)

NOW OR FORMERLY CHEN HUEI LIU (D.B. 56, P. 377)
 NOW OR FORMERLY E.F. GALLIMORE (P.B. 1, P. 248)
 NOW OR FORMERLY THE SOUTHLAND CORPORATION (D.B. 327, P. 653)
 NOW OR FORMERLY NORTHGATE ASSOCIATES (D.B. 297, P. 577; D.B. 166, P. 82; D.B. 183, P. 22)
 NOW OR FORMERLY C.C. CASEY SONS (D.B. 286, P. 555)

NOW OR FORMERLY THE SOUTHLAND CORPORATION (D.B. 327, P. 653)
 NOW OR FORMERLY NORTHGATE ASSOCIATES (D.B. 297, P. 577; D.B. 166, P. 82; D.B. 183, P. 22)

NOW OR FORMERLY C.C. CASEY SONS (P.B. 8, P. 107)

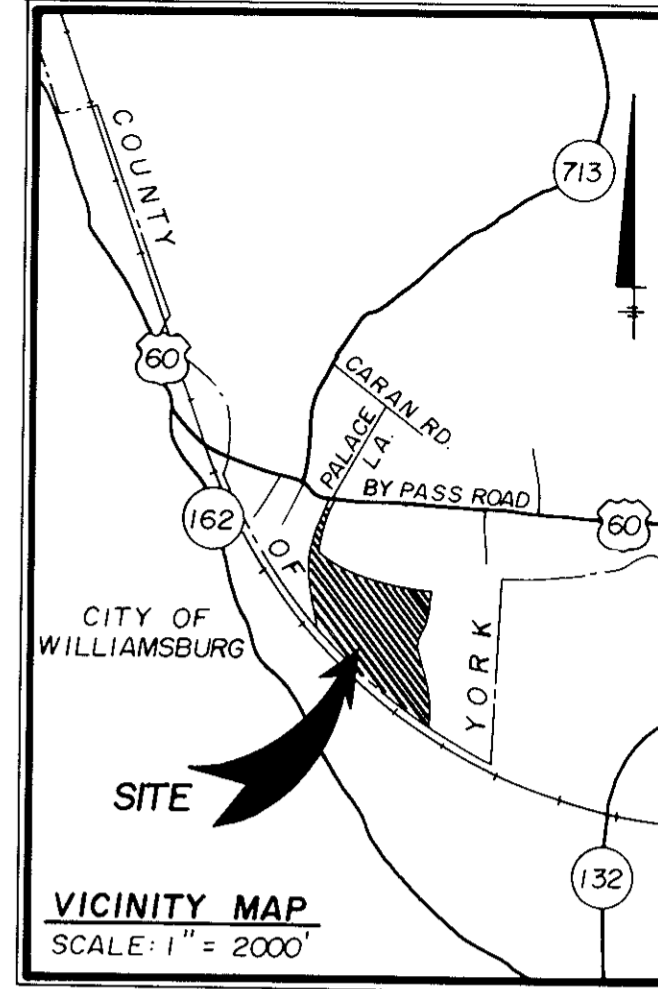
STATE OF VIRGINIA
 COUNTY OF YORK

IN THE CLERK'S OFFICE OF THE CIRCUIT COURT FOR THE COUNTY OF YORK THE 28th DAY OF October, 1988 THIS MAP WAS PRESENTED AND ADMITTED TO RECORD AS THE LAW DIRECTS IN PLAT BOOK 10, PAGE 599.

TESTE: EDITH M. ELLIOTT, CLERK
 CLERK

BY: Karen D. Kelly Watkins, Jr.

CURVE DATA TABLE				
NO.	RADIUS	DELTA	TANGENT	ARC
1	5565.65'	04°-31'-35"	219.96'	439.69'
2	1067.62'	12°-33'-39"	117.50'	234.05'
3	583.76'	34°-45'-06"	182.67'	354.07'
4	683.76'	18°-06'-16"	108.94'	216.06'
5	683.76'	16°-38'-48"	100.03'	198.67'
6	1167.62'	12°-33'-39"	128.50'	255.97'
7	5665.65'	04°-38'-30"	229.62'	459.00'
8	5665.65'	04°-53'-06"	241.67'	483.04'
9	583.76'	22°-51'-55"	118.05'	232.97'
10	583.76'	11°-53'-11"	60.77'	121.11'
11	1067.62'	05°-32'-25"	51.66'	103.23'
12	1067.62'	07°-01'-14"	65.49'	130.82'
13	5565.65'	00°-55'-36"	45.00'	90.00'



VICINITY MAP
 SCALE: 1" = 2000'

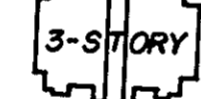
S. Mark Carter
 August 18, 1988

U.S. ROUTE 60 BY PASS ROAD
 (VARIABLE WIDTH)

50' DRAINAGE & UTILITY EASEMENT (P.B. 10, P. 334)

PARCEL B
 "CONVERTIBLE AND WITHDRAWABLE LAND"
 AREA = 15.055 AC.

PHASE V
 0.742 ACRES



PHASE IV

25' DRAINAGE & UTILITY EASEMENT (P.B. 10, P. 334)

20' DRAINAGE & UTILITY EASEMENT (P.B. 10, P. 334)

PHASE I

PHASE II

PHASE III

COMMONS

9

3

10

11

12

13

4

5

6

2

1

7

N76°-34'-21"E
 89.29'

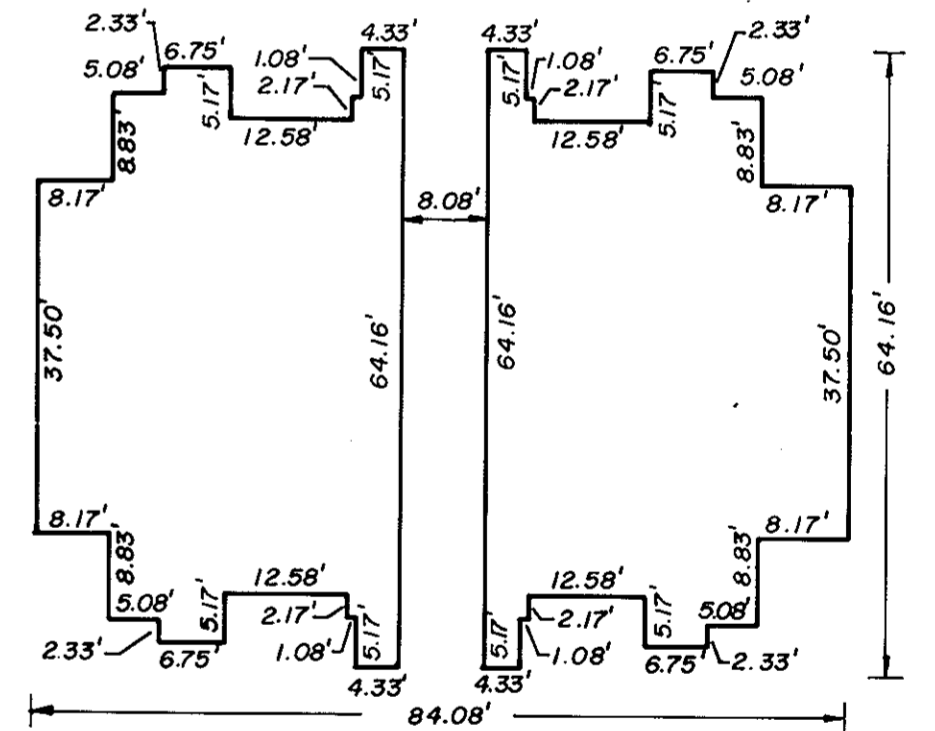
R=683.76' A=198.67'

R=1167.62' A=255.97'

R=1067.62' A=234.05'

R=5565.65' A=439.69'

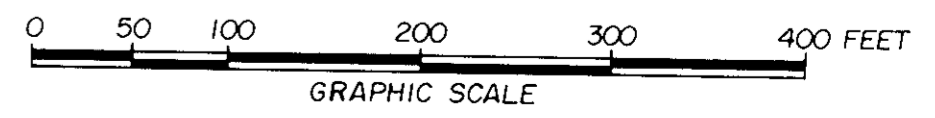
R=5665.65' A=459.00'



BUILDING 16
 N.T.S.

Exhibit F
 PHASE V
 SHEET 1 OF 5
 PLAT OF
 WILLIAMSBURG COMMONS CONDOMINIUMS

FOR
 WILLIAMSBURG COMMONS, INC.
 A VIRGINIA CORPORATION
 BRUTON DISTRICT COUNTY OF YORK, VIRGINIA
 SCALE: 1" = 100' JUNE 8, 1988



THE SIRINE GROUP, LTD.
 SURVEYORS • ENGINEERS • PLANNERS
 P.O. BOX 450, ROUTE 17
 WHITE MARSH, VIRGINIA
 23183

CHESAPEAKE AND OHIO RAILROAD