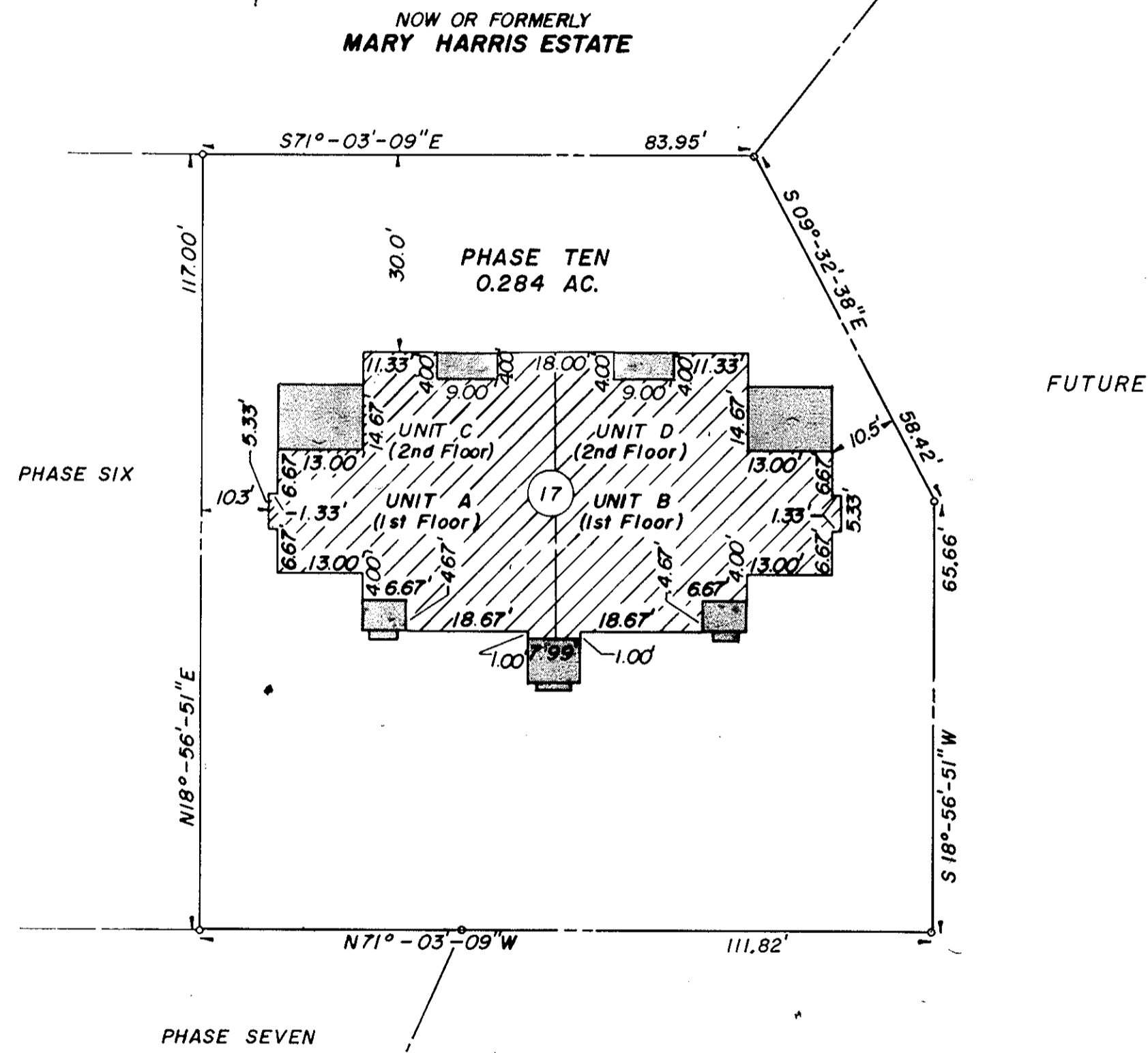


SHEET 2 OF 2  
**BURNT BRIDGE RUN CONDOMINIUM**  
 PHASE TEN  
 GRAFTON DISTRICT COUNTY OF YORK, VIRGINIA  
 SCALE 1" = 20' November 1, 1988

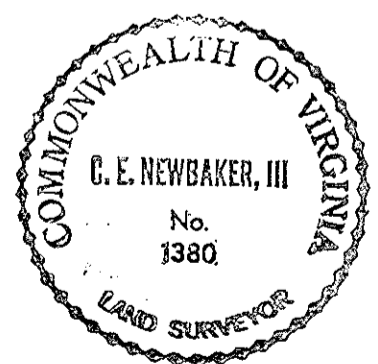


**THE SIRINE GROUP, LTD.**  
 SURVEYORS • ENGINEERS • PLANNERS  
 P.O. BOX 450, ROUTE 17  
 WHITE MARSH, VIRGINIA  
 23183



- NOTES
1. ALL BUILDING DIMENSIONS SHOWN HEREON ARE EXTERIOR DIMENSIONS AND ARE IN FEET.
  2. THE DESIGNATION OF FEE TITLE AREA IS SUPERSEDED BY THE DECLARATION AND IS NOT INTENDED TO IMPLY THAT EXTERIOR WALLS, BEARING WALLS AND OTHER COMMON ELEMENTS ARE FEE TITLE AREA.
  3. I CERTIFY THAT THIS PLAT COMPLIES WITH THE PROVISIONS OF SUBSECTION (c) OF §55-79.58 OF THE CONDOMINIUM ACT AND THAT AND THAT ALL UNITS DEPICTED HEREON HAVE BEEN SUBSTANTIALLY COMPLETED.

SIGNED: C. E. Newbaker III  
 C. E. NEWBAKER III



- LEGEND**
- FEE TITLE AREA
  - COMMON ELEMENTS
  - LIMITED COMMON ELEMENTS
  - LIMIT OF AREA OR ELEMENTS

Book No. 16 Page 636  
 Filed in the Clerk's Office, Circuit Court, York Co., VA.  
10/20/88 December 1988  
 Teller:  
Karen D. McWilliams D.C.  
 Edith M. Elliott, Clerk