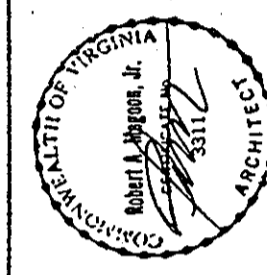


ARCHITECT'S CERTIFICATE

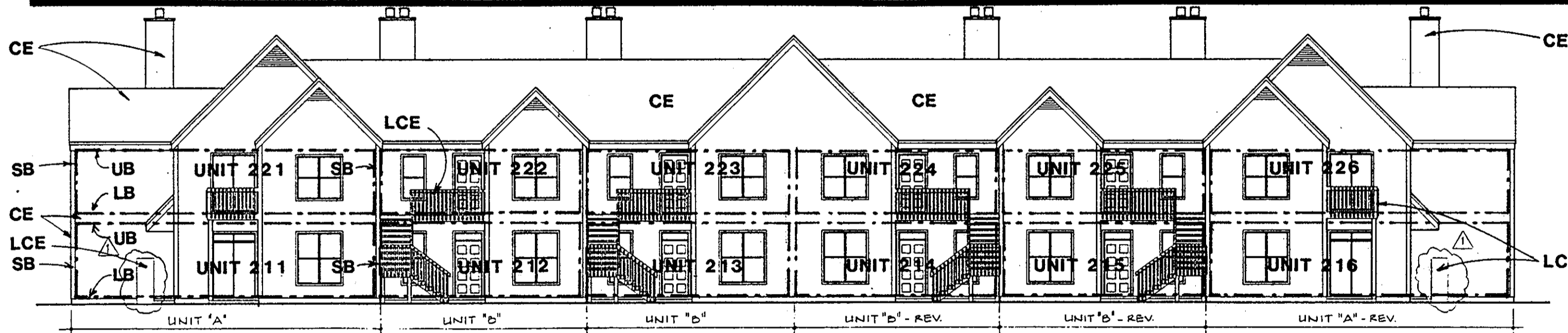
I hereby certify that this is a correct and accurate plan, that this plan is in compliance with Virginia Code Ann. Subsections 55-79.58 (b) and (e), and that the units depicted hereon have been substantially completed.

[Signature]
Robert A. Magoon Jr., AIA

Date 5/10/93

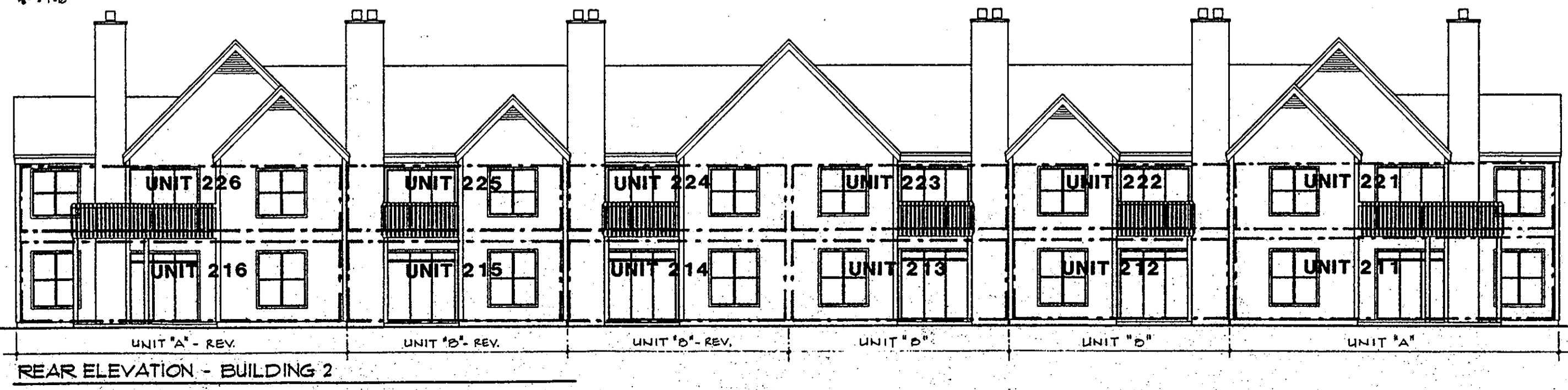


WILLIAMS, TAZEWELL AND ASSOCIATES
Architecture Engineering Planning Interiors
710 West 21st Street,
Norfolk, Virginia 23517



- LEGEND:**
- S.B. - SIDE (PERIMETER) BOUNDARY
 - L.B. - LOWER BOUNDARY
 - U.B. - UPPER BOUNDARY
 - CE - COMMON ELEMENT
 - LCE - LIMITED COMMON ELEMENT

NOTE: BOUNDARY AND COMMON ELEMENT DESIGNATIONS SHOWN FOR BUILDING 2 ARE TYPICAL FOR ALL ELEVATIONS



Filed in the Clerk's Office, Circuit Court, York Co., Va.
the 19th day of May, 1993
Test: *[Signature]*
Nancy B. Kane, Clerk
Plat BK 11 page 610

NO.	DATE	REVISIONS	BY
10/24/91		ADDENDA	
12/6/91		REVISION	

Plat of Condominium
EAGLE SOUND AT KILN CREEK
YORK COUNTY, VIRGINIA

EXHIBIT
A-3
PHASE
TWO

File
9146.01A
Date
Sheet
4 OF 5