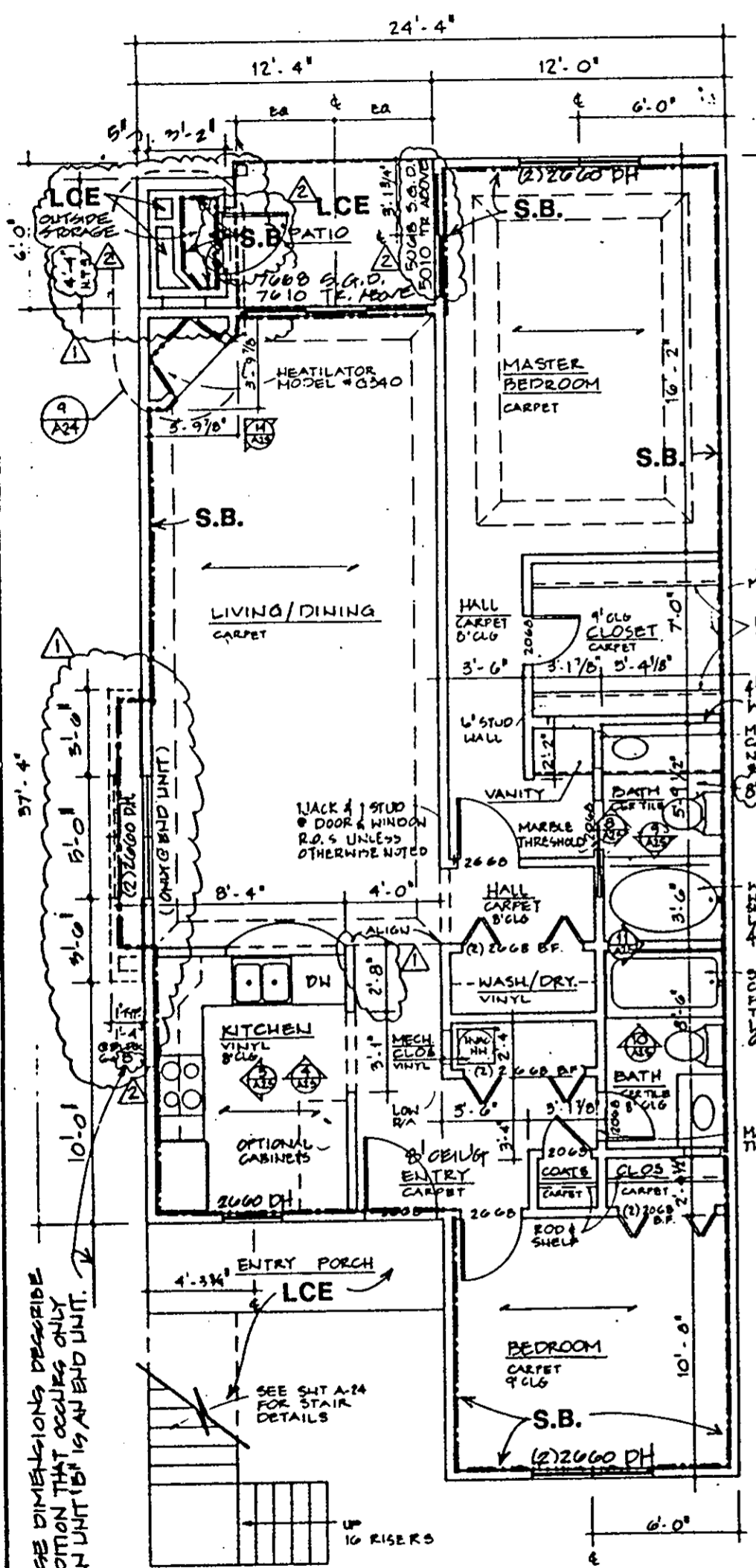
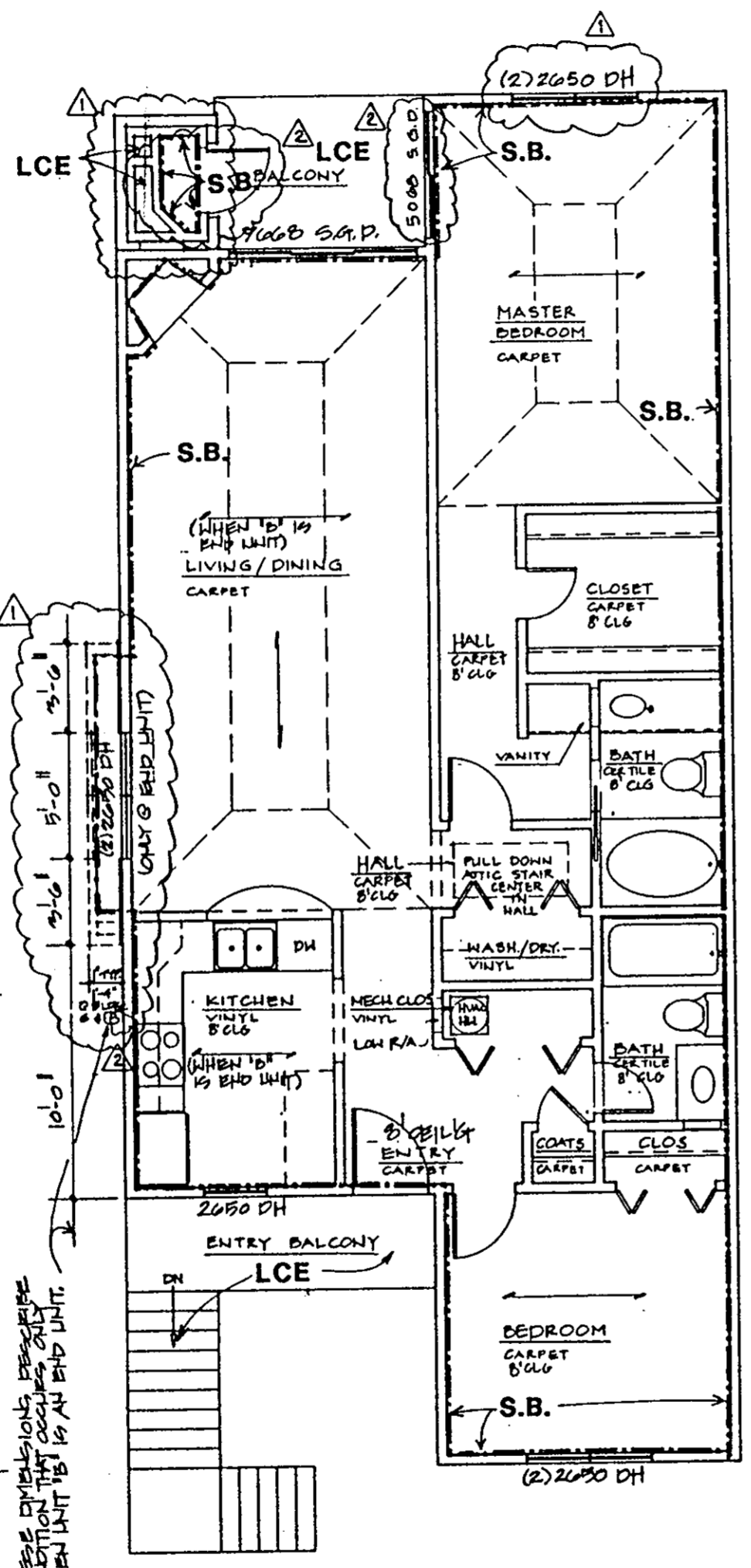


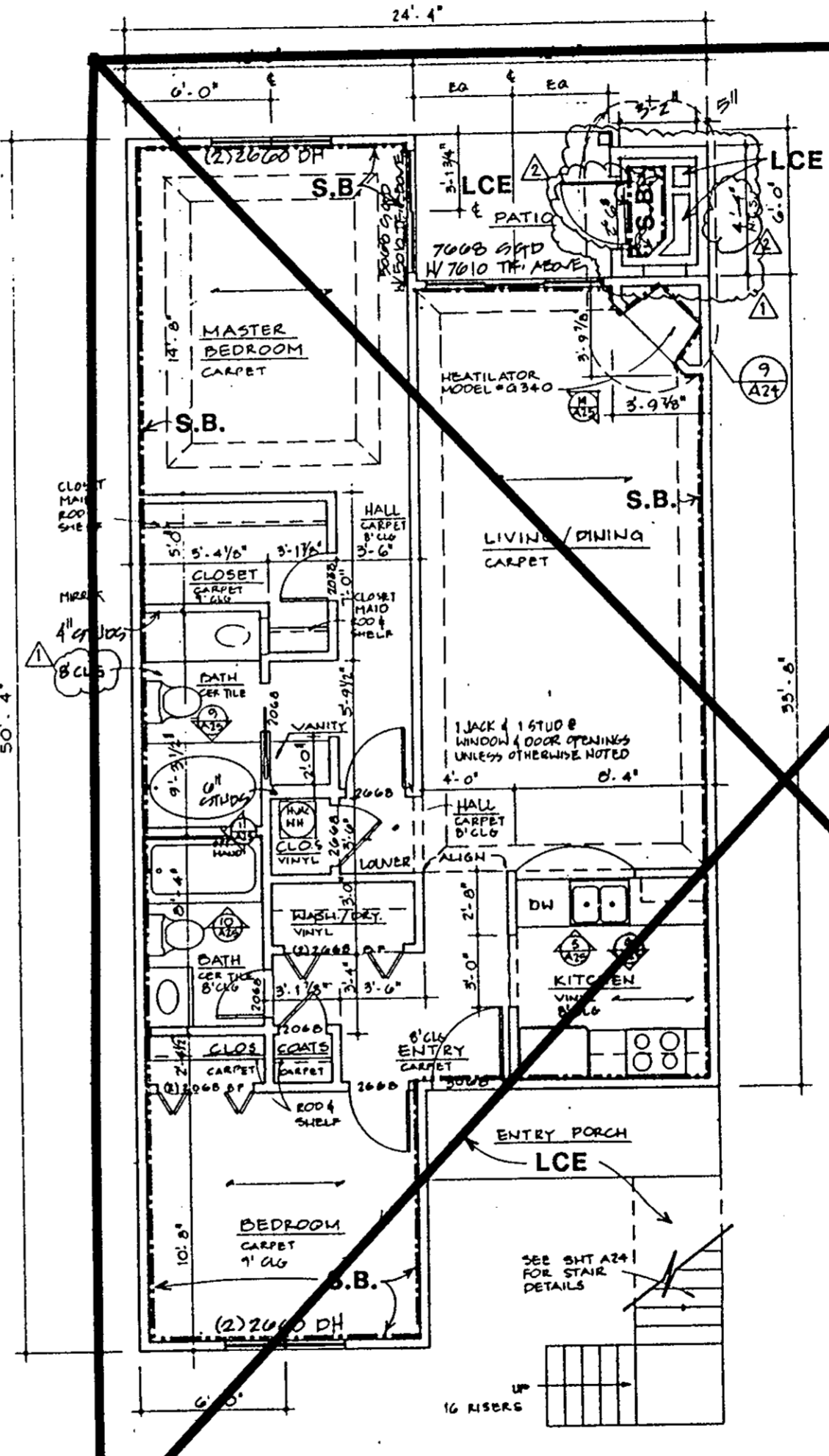
Plat Book No. 11 Page 652
 Filed in the Clerk's Office, Circuit Court, York Co., Va.
 the 24 day of August 1993
 Teste:
 Nancy B. Kara, Clerk
Rachael R. Deane D.G.



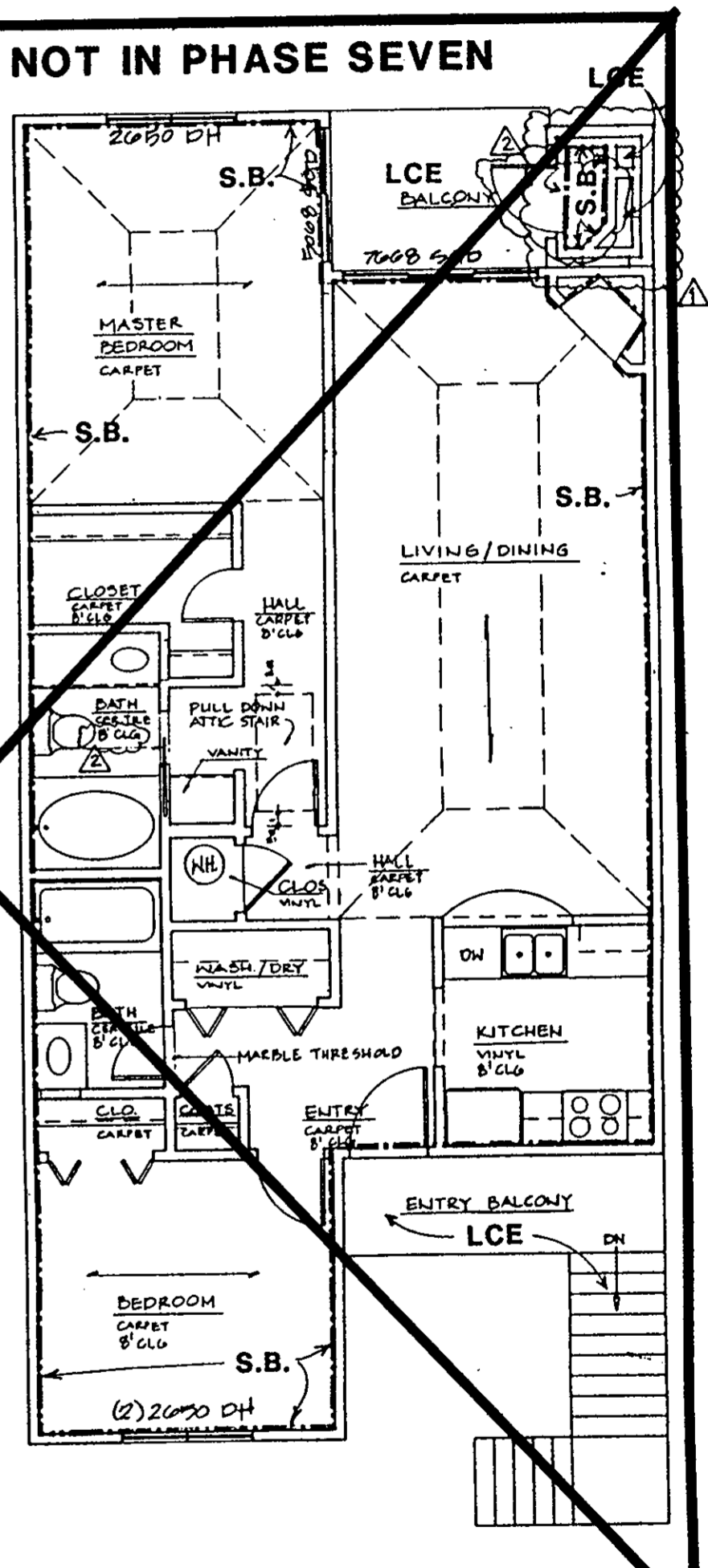
FIRST FLR. PLAN - UNIT 'B'



SECOND FLR. PLAN - UNIT 'B'



FIRST FLR. PLAN - UNIT 'C'



SECOND FLR. PLAN - UNIT 'C'

NOT IN PHASE SEVEN

ARCHITECT'S CERTIFICATE

I hereby certify that this is a correct and accurate plan, that this plan is in compliance with Virginia Code Ann. Subsections 55-79.58 (b) and (e), and that the units depicted hereon have been substantially completed.

Robert A. Magoon Jr.
 Robert A. Magoon Jr., AIA
 Date 8/10/93

LEGEND:
 S.B. - SIDE (PERIMETER) BOUNDARY
 LCE - LIMITED COMMON ELEMENT
 CE - COMMON ELEMENT

NO	DATE	REVISIONS	BY
1	10/26/91	APPENDIX	

WILLIAMS, TAZEWELL AND ASSOCIATES
 Architecture Engineering
 710 West 21st Street,
 Norfolk, Virginia 23517

Plat of Condominium
 EAGLE SOUND AT KILN CREEK
 YORK COUNTY, VIRGINIA

EXHIBIT
 A-3
 PHASE
 SEVEN

File
 9146.01A
 Date
 Sheet
 7 OF 7