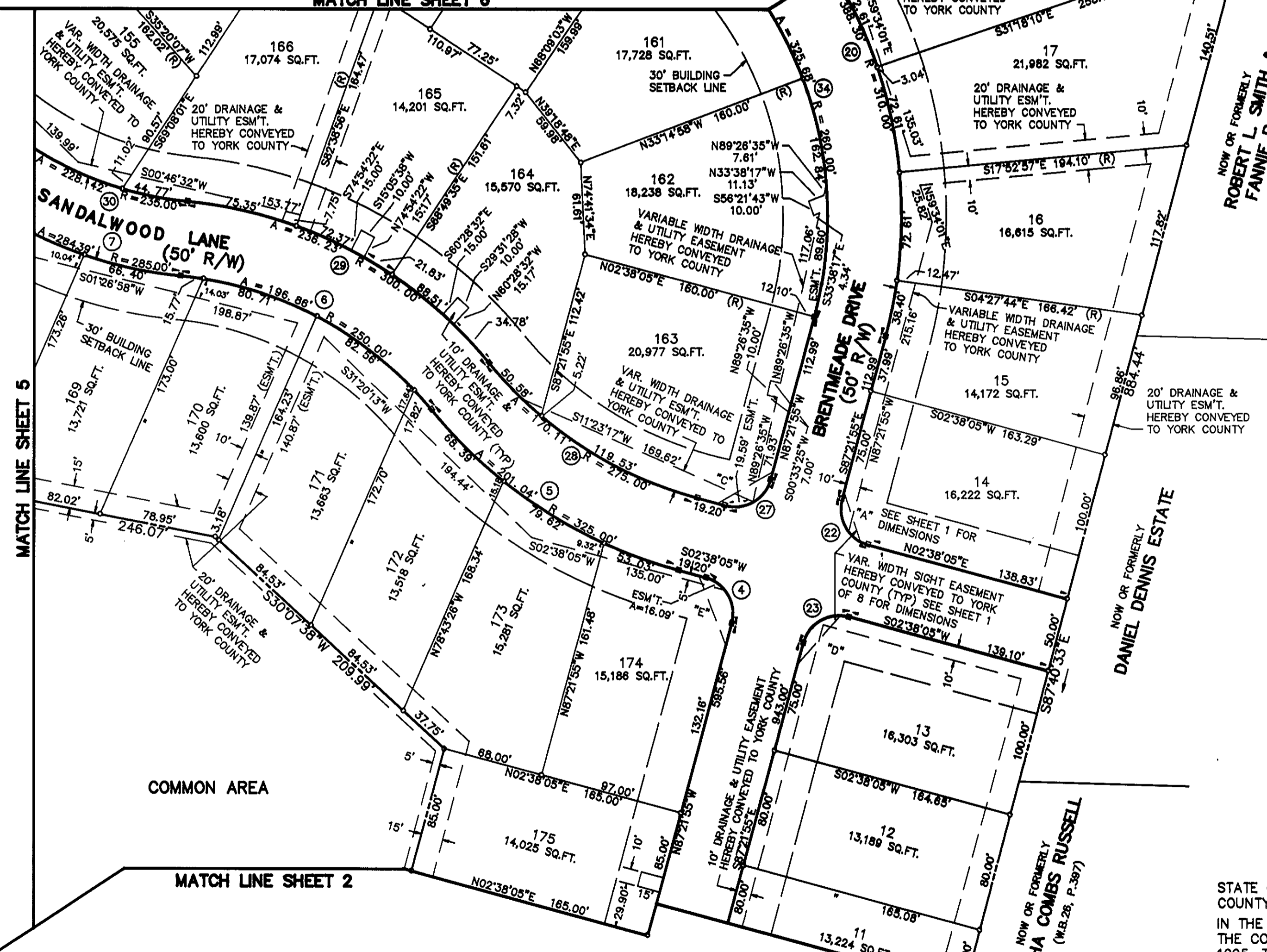


NOW OR FORMERLY  
RUNNING MAN  
SECTION THREE-B  
(P.B.10, P.302)

CONC.  
MON. FD.

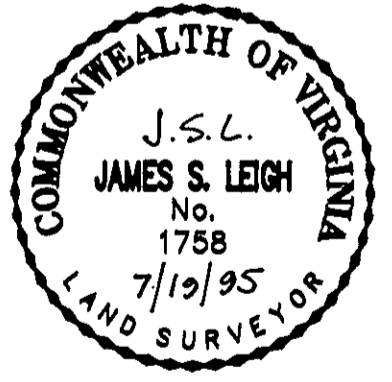
MATCH LINE SHEET 6



NOW OR FORMERLY  
ROBERT L. SMITH &  
FANNIE B. SMITH  
(D.B.135, P.537)

NOW OR FORMERLY  
DANIEL DENNIS ESTATE

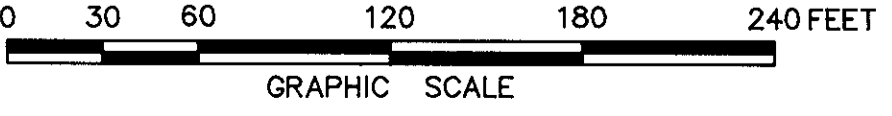
NOW OR FORMERLY  
MARTHA COMBS RUSSELL  
(W.B.26, P.387)



**WYTHE CREEK FARMS**  
SECTION ONE  
(P.B.10, P.427)  
BETHEL DISTRICT - COUNTY OF YORK, VIRGINIA

**THE SIRINE GROUP, LTD.**  
SURVEYORS • ENGINEERS • PLANNERS  
P.O. BOX 450, ROUTE 17  
WHITE MARSH, VIRGINIA 23183

SCALE: 1" = 60' AUGUST 30, 1994  
SHEET 4 OF 8



MATCH LINE SHEET 2

MATCH LINE SHEET 5

STATE OF VIRGINIA  
COUNTY OF YORK  
IN THE CLERK'S OFFICE OF THE CIRCUIT COURT FOR  
THE COUNTY OF YORK THE 14<sup>th</sup> DAY OF August  
1995, THIS PLAT WAS PRESENTED AND ADMITTED TO  
RECORD AS THE LAW DIRECTS IN PLAT BOOK 12,  
PAGE 278.

APPROVED:  
YORK COUNTY BOARD OF SUPERVISORS  
BY: *John T. Hines, PE*  
PLAT APPROVING AGENT  
DATE: 8-14-95

TESTE: *Nancy B. Kane*  
CLERK  
BY: *Carol D. ...*