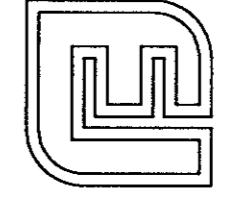


PLAT SHOWING RESUBDIVISION OF WHITTAKERS MILL TRACT

BRUTON DISTRICT YORK COUNTY, VIRGINIA
DATE: 05/28/98 SCALE: 1"=200'
SHEET 2 OF 6

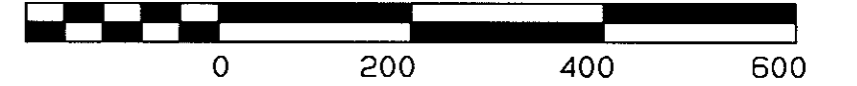


Langley and McDonald, P.C.

Engineers · Surveyors · Planners
Landscape Architects · Environmental Consultants
VIRGINIA BEACH WILLIAMSBURG

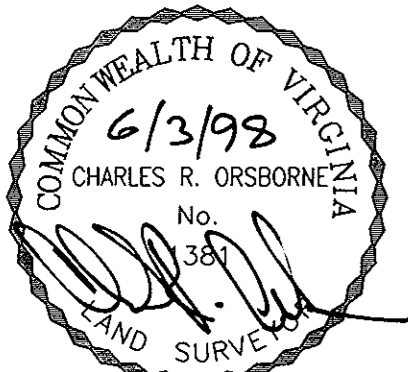
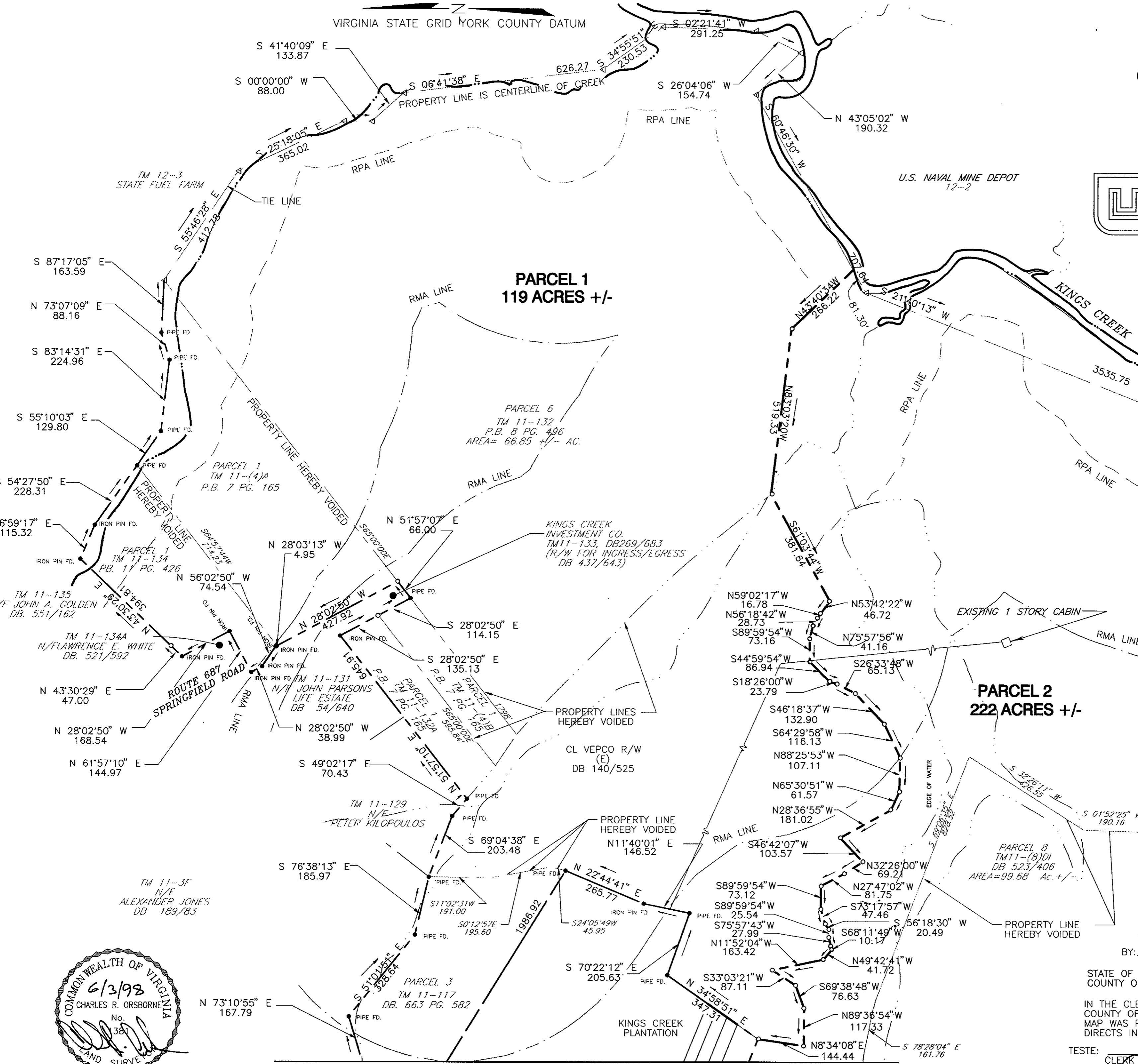
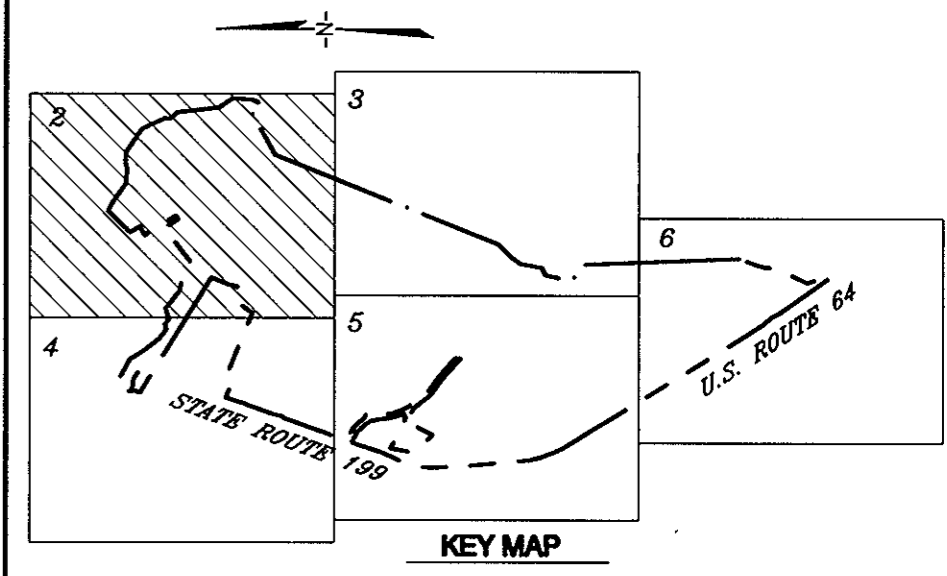
201 PACKETS COURT
WILLIAMSBURG, VA 23185
(804) 253-2975

GRAPHIC SCALE 1"=200'



MATCH LINE SEE SHEET 3

- PROPERTY LINE (EXISTING)
- PROPERTY LINE (PROPOSED)
- TIE LINE
- TAX PARCEL LINE
- EDGE OF WATER
- RIGHT OF WAY
- RPA (SEE NOTE 9)
- RMA (SEE NOTE 9)



APPROVED:
YORK COUNTY BOARD OF SUPERVISORS
BY: Al Maddalena 7/1/98
PLAT APPROVING AGENT

STATE OF VIRGINIA
COUNTY OF YORK

IN THE CLERK'S OFFICE OF THE CIRCUIT COURT FOR THE
COUNTY OF YORK THIS 23rd DAY OF July 1998 THIS
MAP WAS PRESENTED AND ADMITTED TO RECORD AS THE LAW
DIRECTS IN PLAT BOOK 12 PAGE 598 3:45

TESTE: Nancy B. Kage, Clerk
BY: [Signature]

MATCH LINE SEE SHEET 4