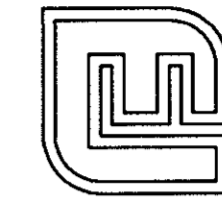


PLAT SHOWING
 RESUBDIVISION
 OF WHITTAKERS MILL TRACT

BRUTON DISTRICT YORK COUNTY, VIRGINIA
 DATE: 05/28/98 SCALE: 1"=200'

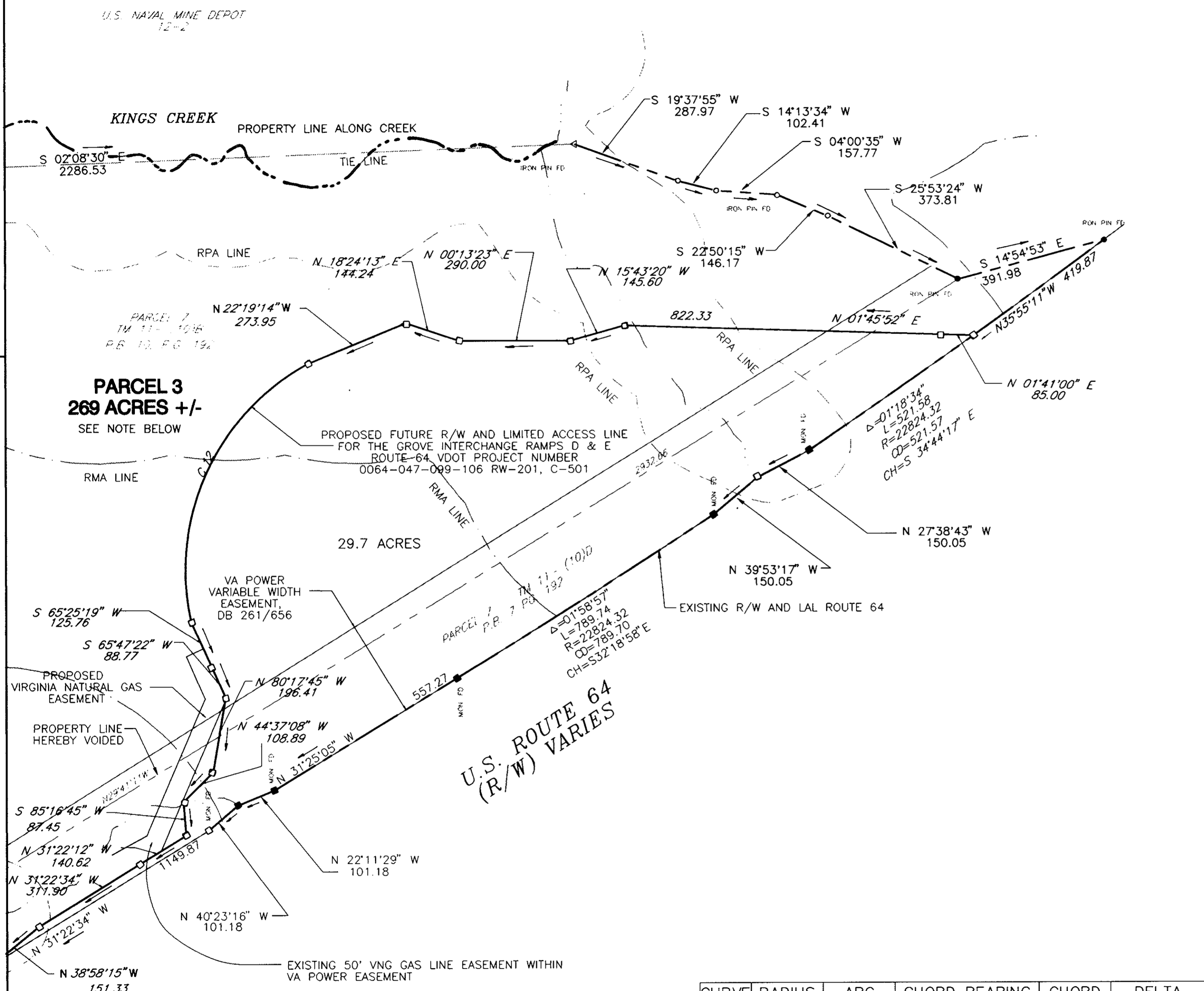
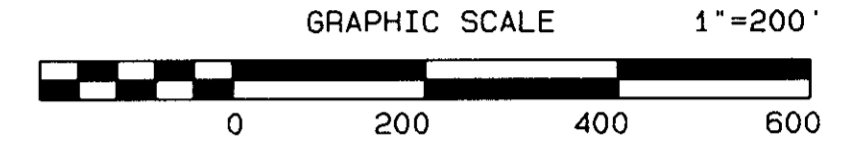
SHEET 6 OF 6



Langley and McDonald, P.C.

Engineers · Surveyors · Planners
 Landscape Architects · Environmental Consultants

VIRGINIA BEACH WILLIAMSBURG
 201 PACKETS COURT
 WILLIAMSBURG, VA 23185
 (804) 253-2975



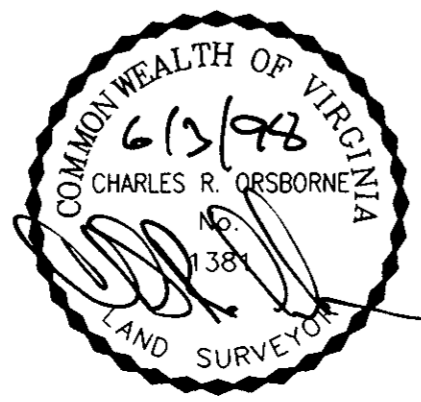
PARCEL 3
 269 ACRES +/-
 SEE NOTE BELOW

PROPOSED FUTURE R/W AND LIMITED ACCESS LINE
 FOR THE GROVE INTERCHANGE RAMP D & E
 ROUTE-64, VDOT PROJECT NUMBER
 0064-047-009-106 RW-201, C-501

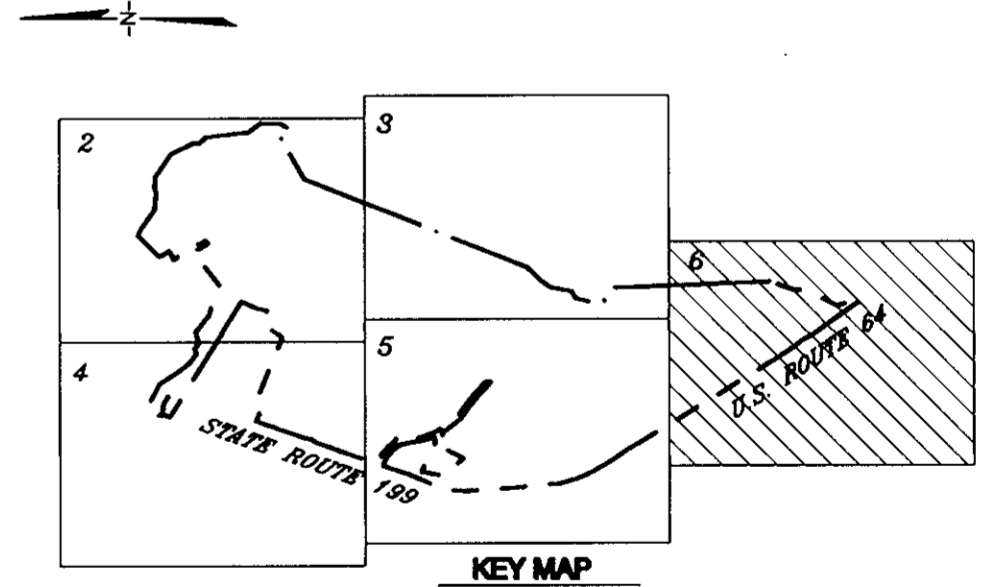
29.7 ACRES

U.S. ROUTE 64
 (R/W) VARIES

NOTE: AREA FOR PARCEL 3 INCLUDES FUTURE
 R/W AREA SHOWN AS 29.7 ± ACRES



CURVE	RADIUS	ARC	CHORD BEARING	CHORD	DELTA
C1	437.47'	273.69'	N52°27'21"W	269.25'	35°50'44"
C2	517.47'	323.73'	S52°27'23"E	318.48'	35°50'41"
C3	174.75'	135.16'	S56°41'33"E	131.82'	44°19'00"
C4	447.47'	156.43'	N12°22'55"W	155.63'	20°01'45"
C5	433.97'	136.64'	S12°00'49"W	136.08'	18°02'26"
C6	983.31'	282.76'	N10°36'20"W	281.79'	16°28'34"
C7	923.31'	604.07'	S27°57'29"E	593.35'	37°29'06"
C8	461.94'	231.96'	S29°45'31"E	229.53'	28°46'15"
C9	461.94'	445.56'	S71°46'35"E	428.49'	55°15'53"
C10	575.00'	419.60'	S78°30'12"E	410.35'	41°48'40"
C11	706.26'	631.99'	S31°57'45"E	611.12'	51°16'16"
C12	608.00'	791.21'	S65°25'40"E	736.55'	74°33'41"
C13	923.31'	90.42'	S06°24'36"E	90.38'	05°36'40"



APPROVED:
 YORK COUNTY BOARD OF SUPERVISORS
 BY: Al Maddalena 7/1/98
 PLAT APPROVING AGENT

STATE OF VIRGINIA
 COUNTY OF YORK

IN THE CLERK'S OFFICE OF THE CIRCUIT COURT FOR THE
 COUNTY OF YORK THIS 2nd DAY OF July 1998 THIS
 MAP WAS PRESENTED AND ADMITTED TO RECORD AS THE LAW
 DIRECTS IN PLAT BOOK 132 PAGE 602 3:45

TESTE: Nancy B. Kane, Clerk
 CLERK

BY: [Signature]