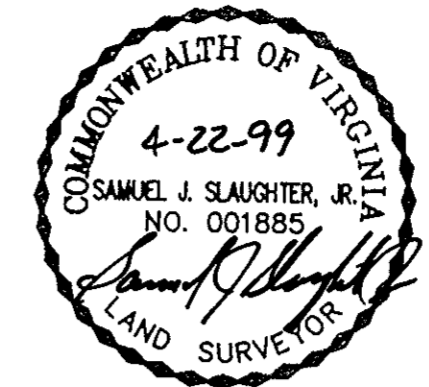


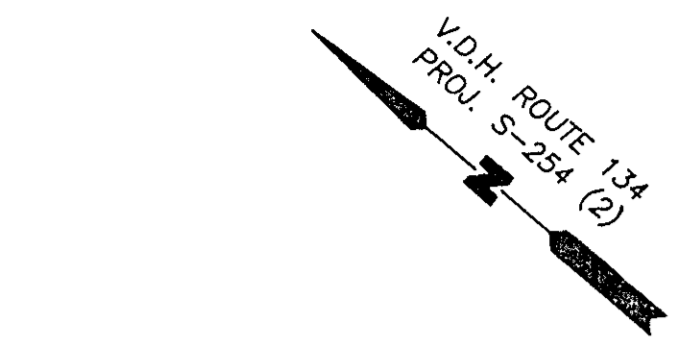
PLAT OF SUBDIVISION
THE GREENLANDS
PHASE ONE
BETHEL MAGISTERIAL DISTRICT
COUNTY OF YORK, VIRGINIA



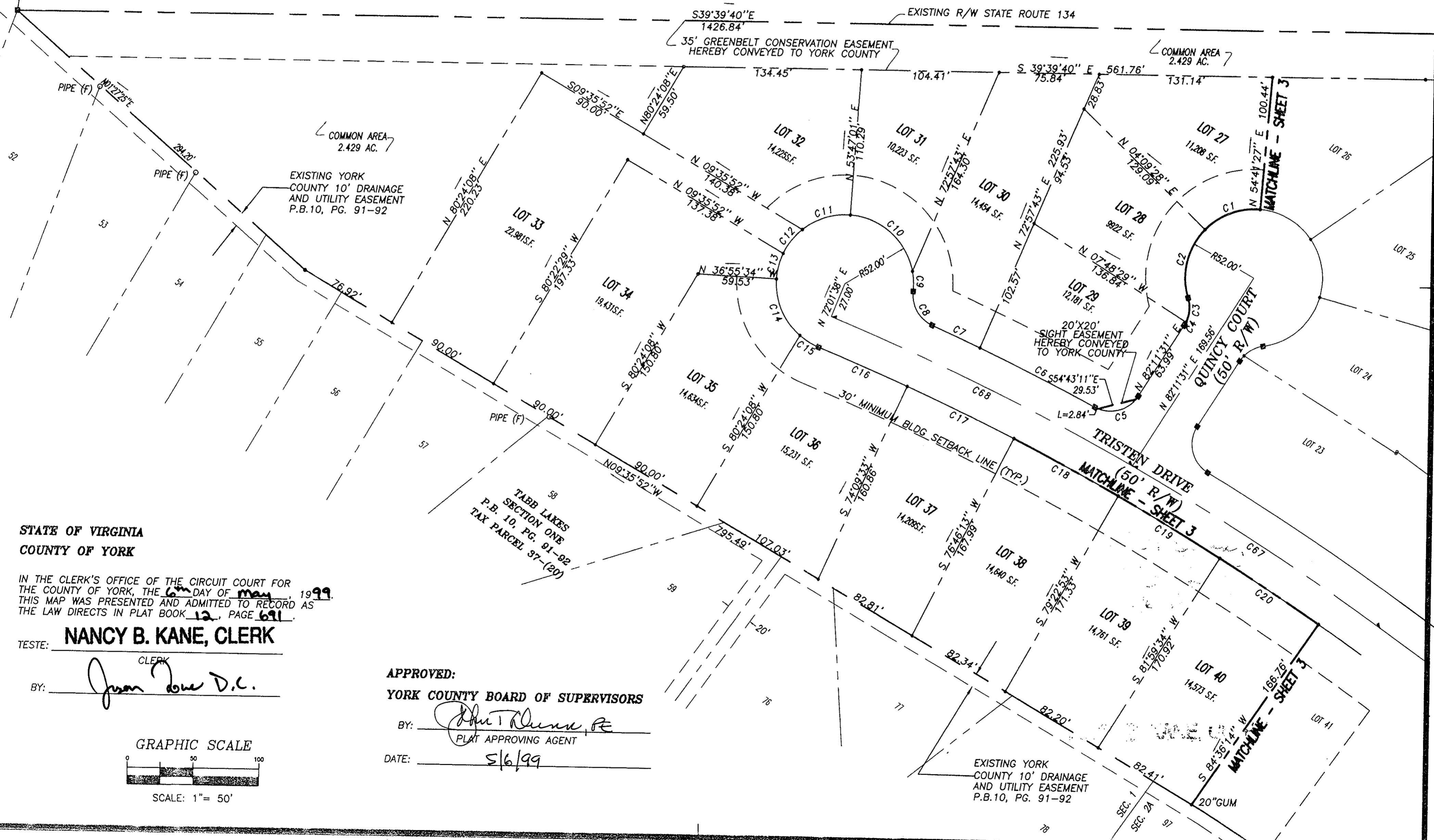
DATE: 4/20/99 SHEET 2 OF 7 SCALE: 1"=50'
PROJECT NO: 96-022 DRAWN BY:

SLEDD & ASSOCIATES, P.C.
ENGINEERS PLANNERS SURVEYORS
11832 ROCK LANDING DRIVE, SUITE 203
NEWPORT NEWS, VIRGINIA 23606
(757) 873-3386

HAMPTON HIGHWAY
STATE ROUTE 134
(167' R/W)



127' TO TABB LAKES DRIVE
STATE ROUTE 1690



STATE OF VIRGINIA
COUNTY OF YORK

IN THE CLERK'S OFFICE OF THE CIRCUIT COURT FOR
THE COUNTY OF YORK, THE 6th DAY OF May, 1999.
THIS MAP WAS PRESENTED AND ADMITTED TO RECORD AS
THE LAW DIRECTS IN PLAT BOOK 12, PAGE 691.

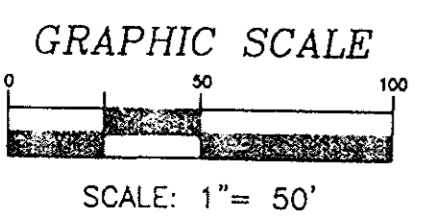
TESTE: **NANCY B. KANE, CLERK**

BY: John D. C.
CLERK

APPROVED:
YORK COUNTY BOARD OF SUPERVISORS

BY: [Signature]
PLAT APPROVING AGENT

DATE: 5/6/99



EXISTING YORK
COUNTY 10' DRAINAGE
AND UTILITY EASEMENT
P.B.10, PG. 91-92

TABB LAKES
SECTION ONE
P.B. 10, PG. 91-92
TAX PARCEL 37-(20)

20'X20'
SIGHT EASEMENT
HEREBY CONVEYED
TO YORK COUNTY

35' GREENBELT CONSERVATION EASEMENT
HEREBY CONVEYED TO YORK COUNTY

EXISTING YORK
COUNTY 10' DRAINAGE
AND UTILITY EASEMENT
P.B.10, PG. 91-92

COMMON AREA
2.429 AC.

COMMON AREA
2.429 AC.

20" GUM

SEC. 1
SEC. 2A
97