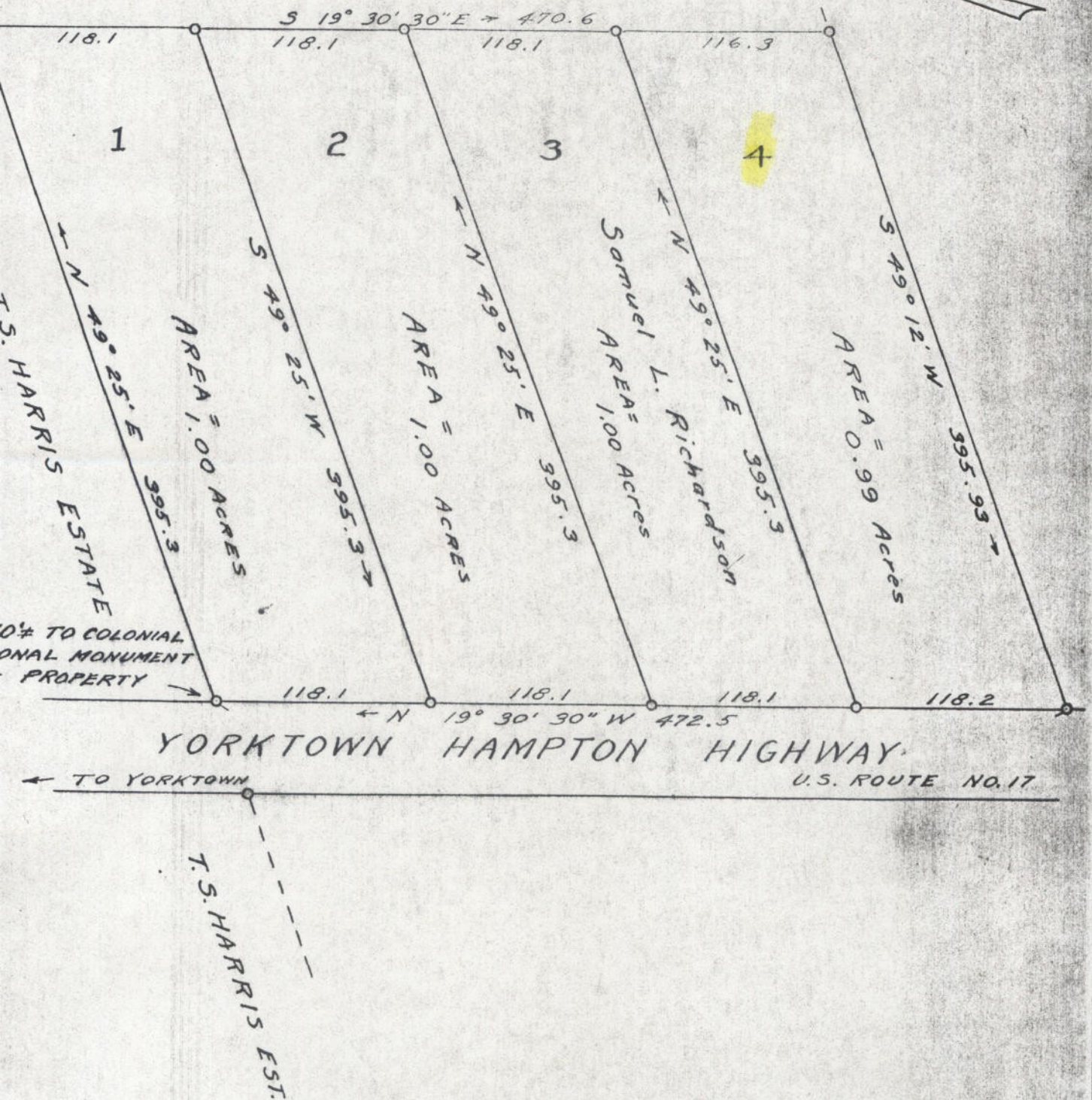


NOW OR FORMERLY AMERICAN CEMENT ENGINEERING CO.



MAP SHOWING SUBDIVISION OF A PORTION OF 405.8 ACRES OF LAND SITUATED ON THE YORKTOWN-HAMPTON HIGHWAY ADJACENT TO THE YORKTOWN BATTLEFIELD AREA-COLONIAL