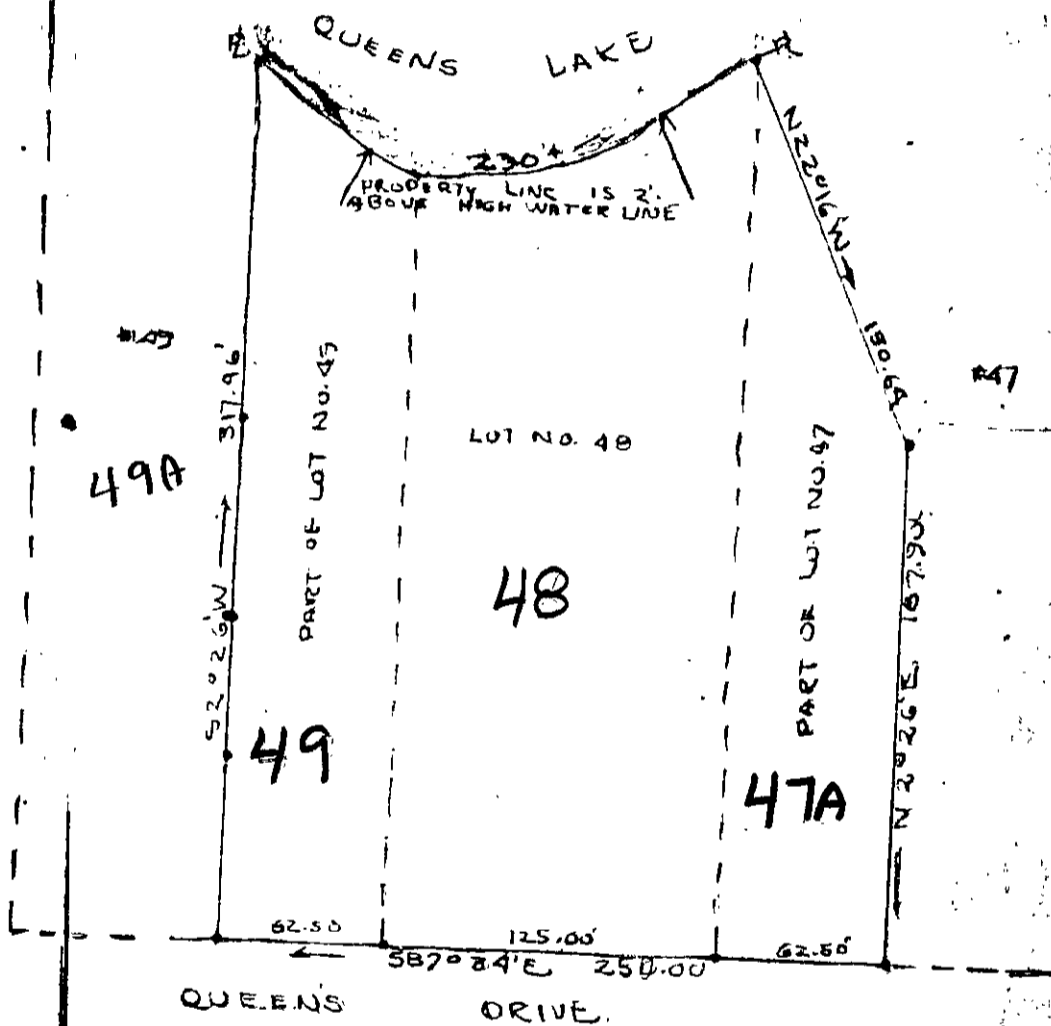


85-437

487



QUEENS LAKE DEVELOPMENT COMPANY

PLAT SHOWING SURVEY OF PARCEL EMBRACING LOT NO. 48 & PART OF

LOT NOS. 47 AND 49,

SITUATED IN BRITTON DISTRICT, YORK COUNTY, VIRGINIA.

JULY 29, 1952

SCOTT & CO.

BOUNDARIES ARE SHOWN THUS

Tax Map

7A1 (D)

Lots 47A, 48, 49