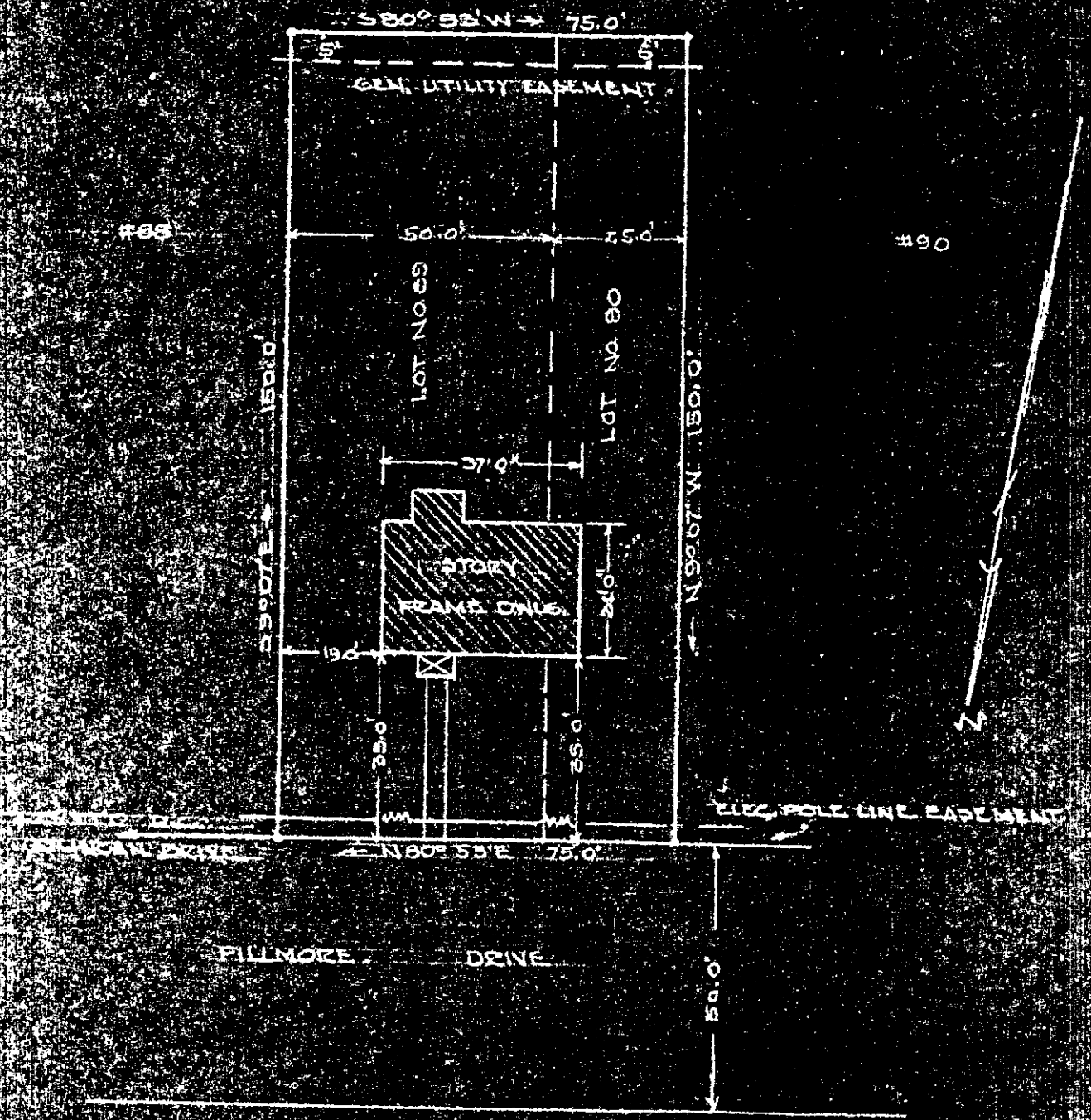


BENEL CORPORATION



GREEN COUNTY VIRGINIA

YORK TERRACE DEVELOPMENT

BENEL CORPORATION OWNER

PLAT SHOWING BOUNDARY SURVEY AND LOCATION OF IMPROVEMENTS

SECTION NO. I

SEPT. 24, 1954

SCALE 1" = 30'

IRON PIPES AT ALL CORNERS

PARTS OF LOTS 89 & 90

Warrant D. M. G. M. (unclear)  
Reg. Va. 191-157