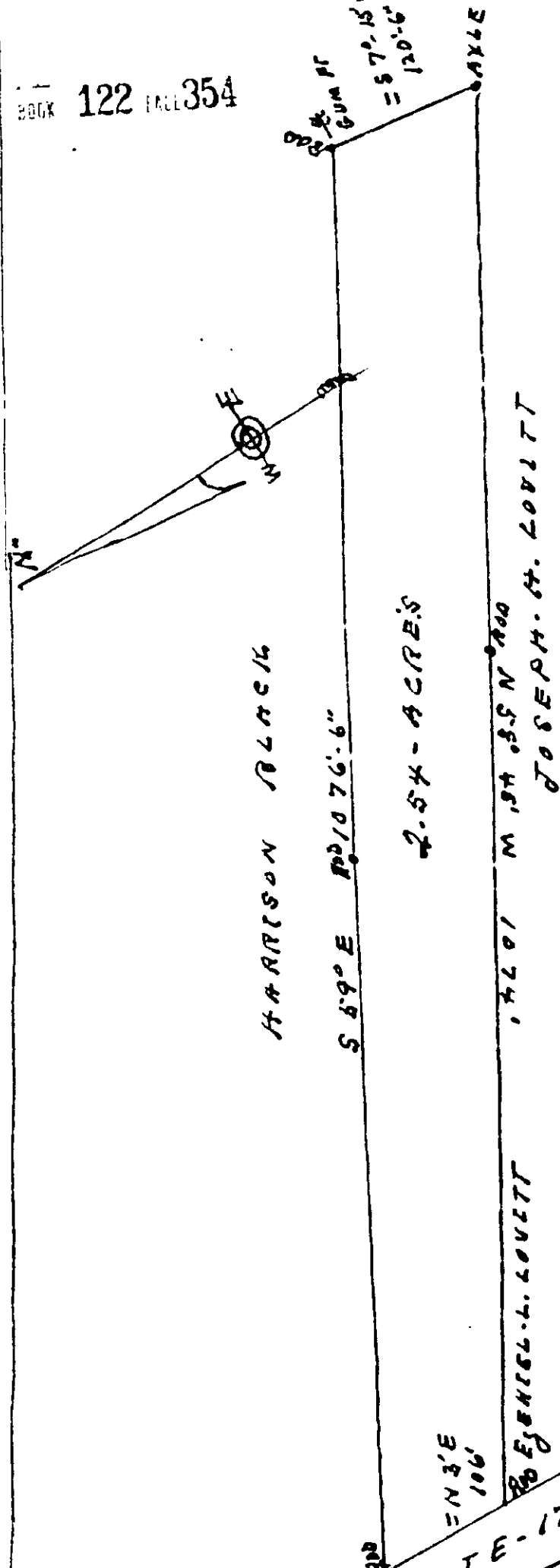


COLLEGE'S ESTATE



PLAT OF 2.54 ACRES OF LAND
 SITUATED ON ROUTE-17. IN THE
 WESTERN DISTRICT OF YORK
 COUNTY VIRGINIA, SURVEYED
 FOR CLAYTON MARVEN LOVETT.

R. F. Myerson
 City of New York
 1889 A.D.

June 10 1907
 Scale 1" = 100'

ROUTE-17 - TO NEWPORT NEWS

WENNA, County of York to-wit:
 In the Clerk's Office of the Circuit Court for the County of
 York, this 25th day of February, 1908.
 This deed was presented with the certificate prepared and submitted
 to record at 1:15 o'clock PM
 By: *[Signature]* Deputy Clerk