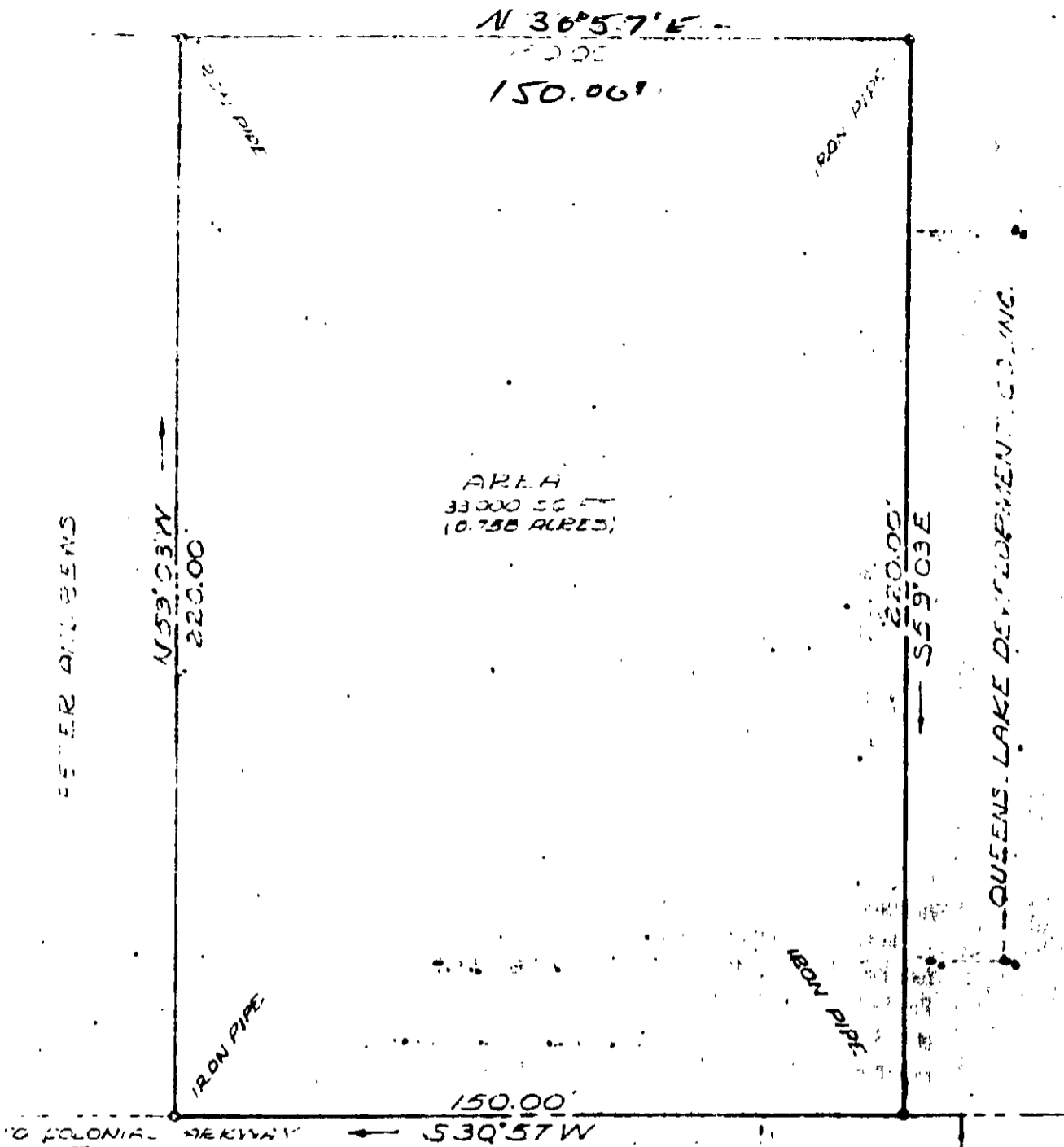


QUEENS LAKE DEVELOPMENT CO., INC.



AREA  
33,000 SQ FT  
(0.758 ACRES)

PETER DILLENS

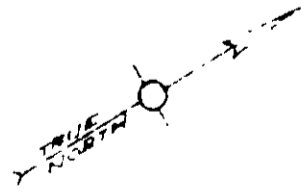
QUEENS LAKE DEVELOPMENT CO., INC.

TO COLONIAL DRIVE

S 39° 57' W

QUEENS DRIVE

50'



ARTHUR MESSER & COMPANY  
ENGINEERS 220 E 57th ST  
NEW YORK 22, N.Y.

PLAT SHOWING SURVEY  
OF A PARCEL OF LAND TO BE  
CONVEYED FROM  
QUEENS LAKE DEVELOPMENT CO., INC. TO  
DIDDLEY, M. WOODS AND  
HELM, M. WOODS  
BROTHLY DISTRICT  
YONKERS COUNTY  
NEW YORK  
JULY 9, 1959

7A2 (9) 39