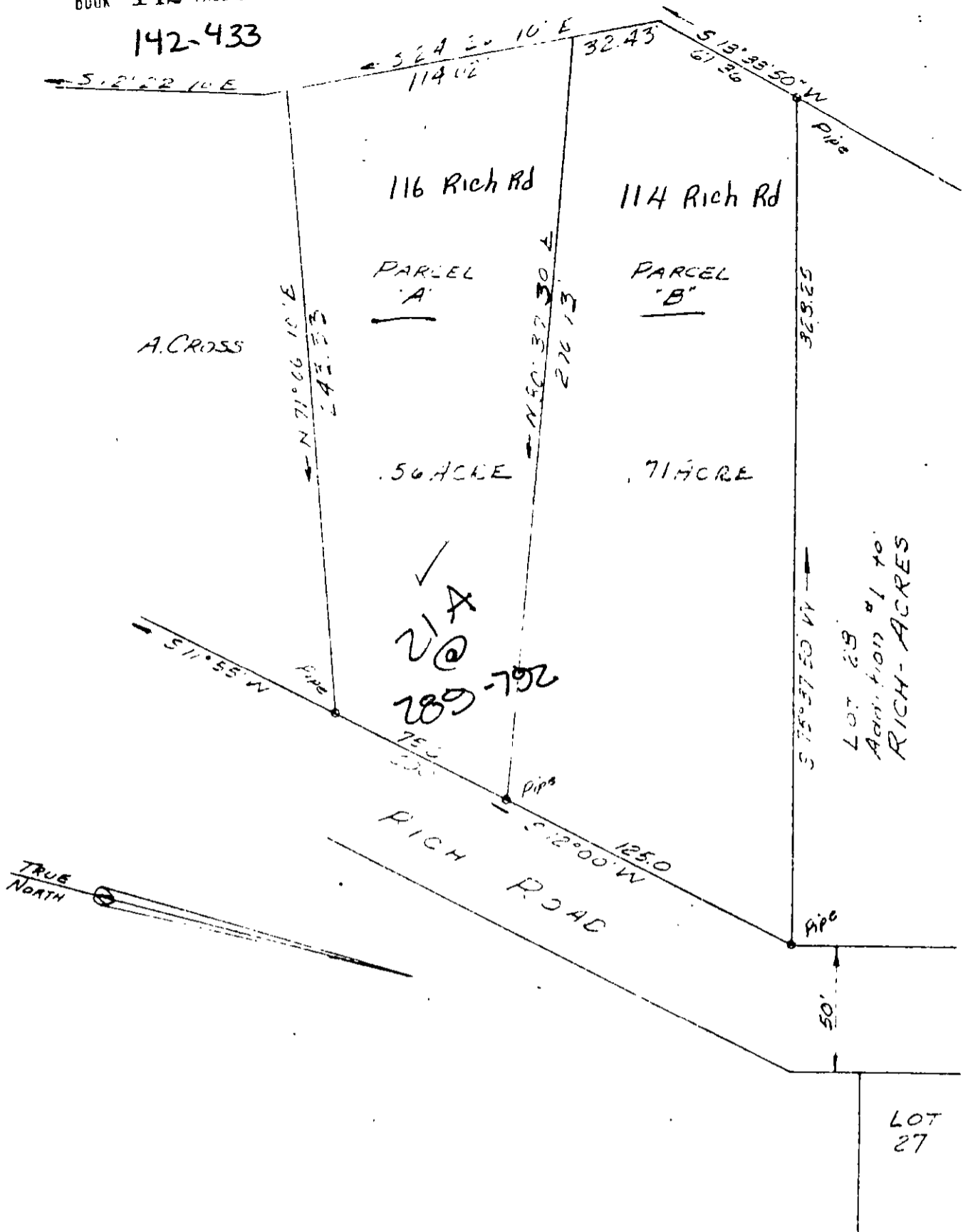


142-433



Compiled
 Plat of the Property of
 EMMA R BAKER
 BETHEL DISTRICT
 YORK COUNTY, VA
 Wetherill D. Thomas
 W. D. THOMAS C.L.S. #579
 Scale "1" = 50' February 25, 1960

VIRGINIA: County of York to-wit
 In the Clerk's Office of the Circuit Court for the County of York, the 8th day of August, 1960
 This deed was presented with the certificate and requisite amount of U. S. I. R. Stamps amounting to \$8.25 annexed and cancelled, admitted to record at 3:00 o'clock P.M.
 Teste: MELVILLE I. BRYANT, Clerk
 By: Wetherill D. Thomas Deputy Clerk

36-A-3-21