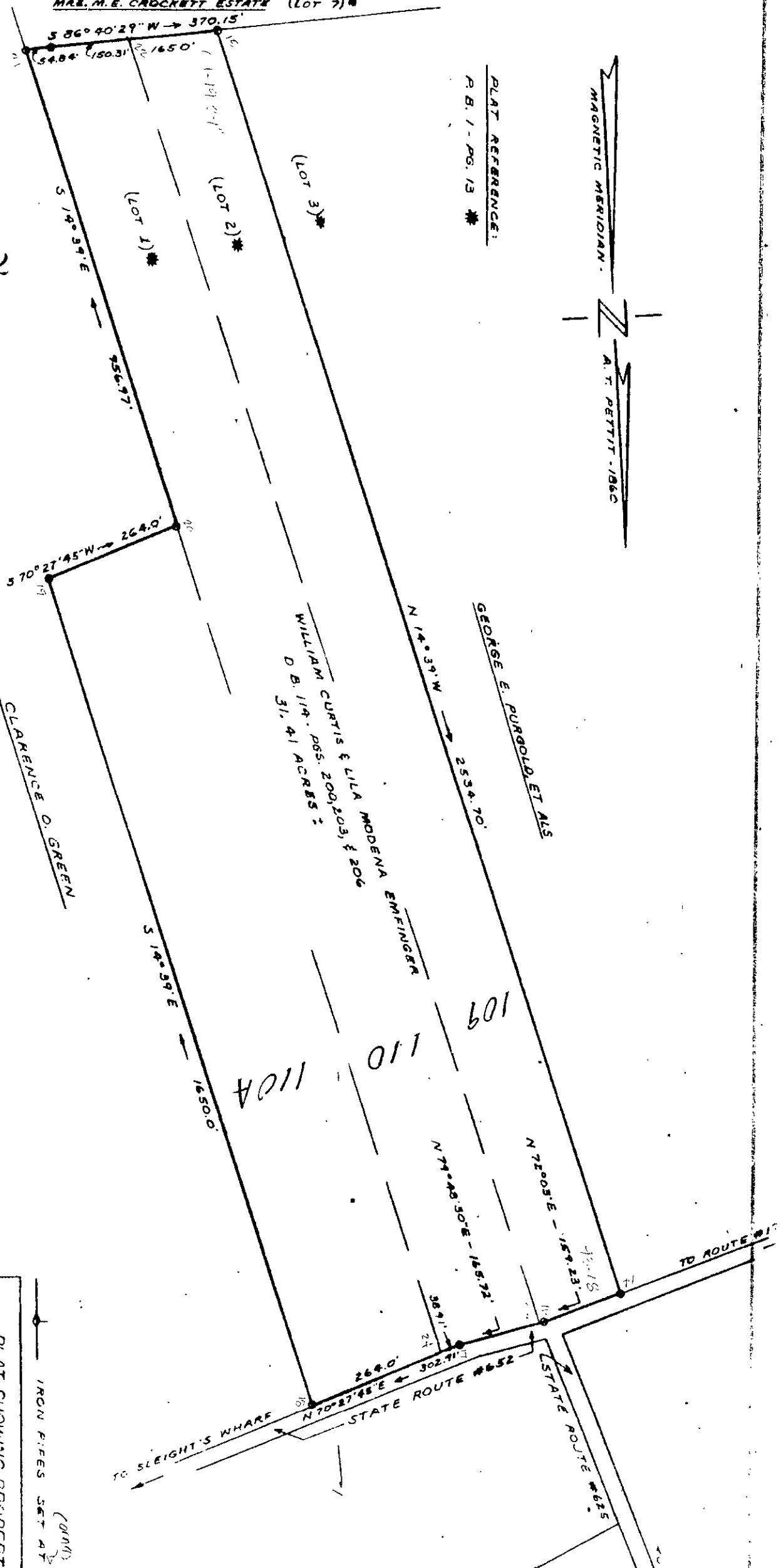


25-109,110
110A

BOOK 142 PAGE 472

MRS. M. E. CROCKETT ESTATE (Lot 7)



MAGNETIC MERIDIAN -
A. T. PETTIT - 1860

PLAT REFERENCE:
P. B. 1 - PG. 13 *

WILLIAM CURTIS & LILA MODENA EMFINGER
D. B. 119 - PGS. 200, 203, & 206
31.41 ACRES ±

CLARENCE O. GREEN

GEORGE E. PURGOLD ET ALS



PLAT SHOWING PROPERTY
WILLIAM CURTIS & LILA MODENA

BEING LOCATED IN
GRAFTON MAGISTERIAL (15)
SEAFORD, YORK COUNTY, VIR

JULY 19, 1960

SCALE: 1" = 200'

(ORANGE)
IRON PIPES SET AT