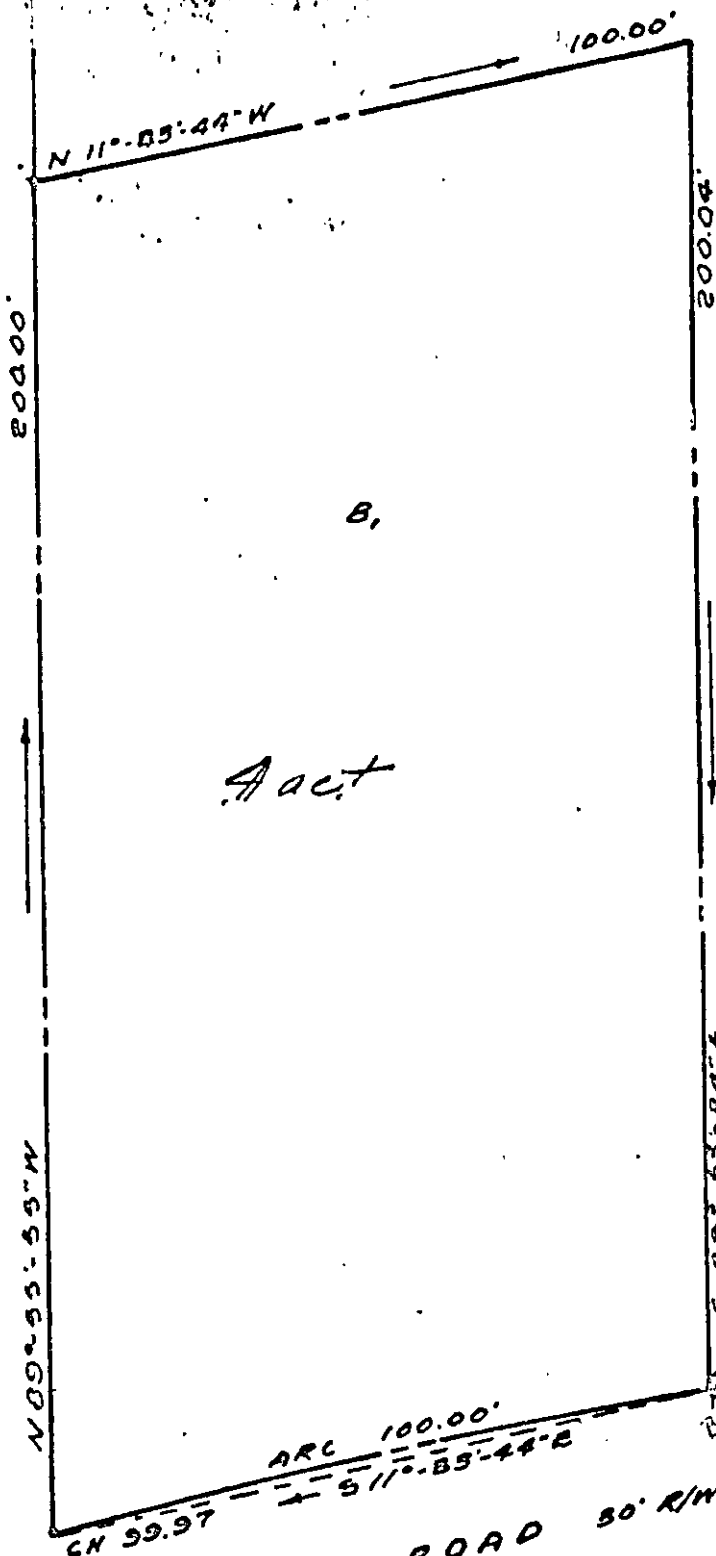


B



43' ROAD ALLOWANCE

A act

B,

Andrew Jordan  
CIVIL ENGINEER

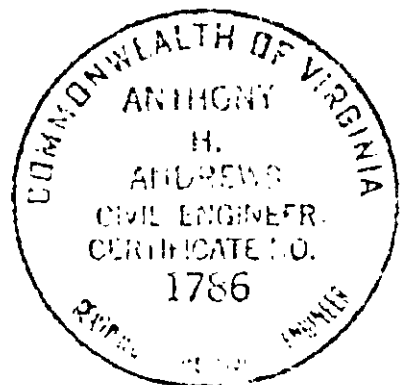
RT 108

DIG BETHEL ROAD 30' R/W

REA: D. G. 40 27 32-33. P. G. 3 416

ORIG  
part of  
370093 ✓

PLAT  
 OF PROPERTY OF  
 GEORGE E. JORDAN YORK COUNTY  
 VIRGINIA  
 POQUOSON DISTRICT  
 LOT 9 KRATZER FARM  
 SHOWING A PART OF PARCEL "B"



ANDREWS

ENGINEER/ASSOCIATE