

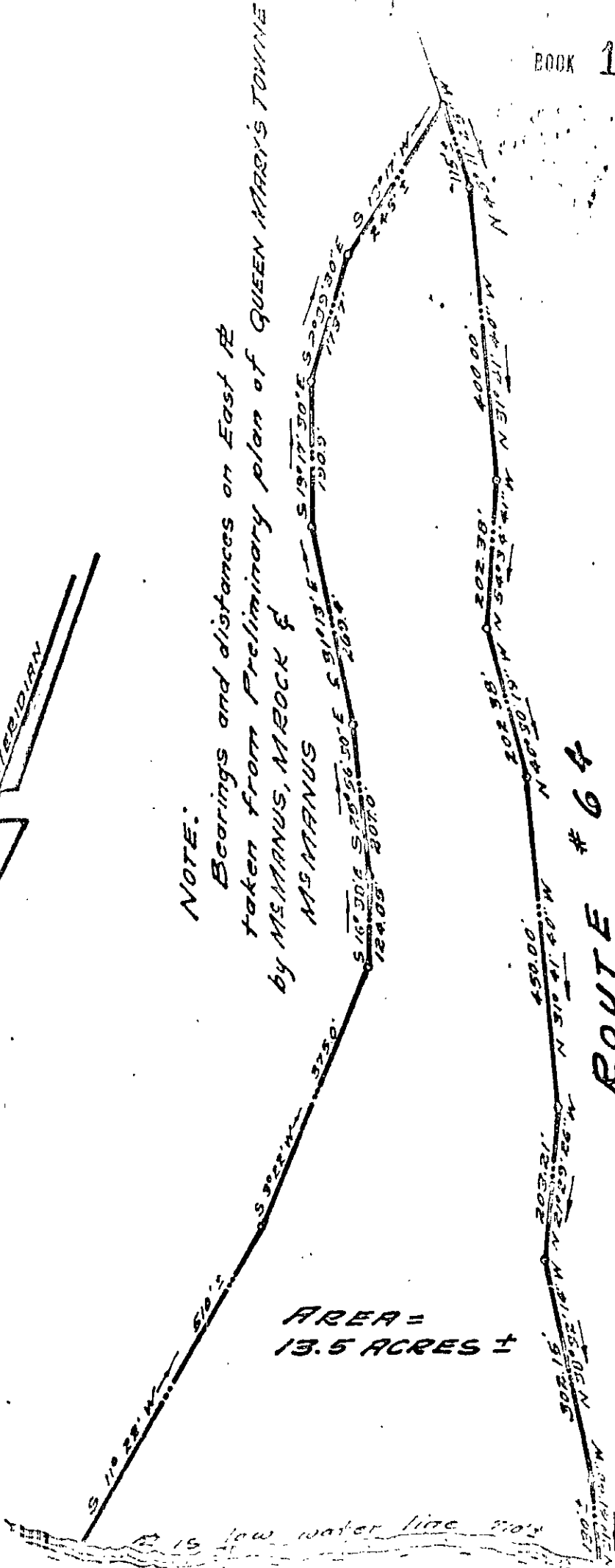
NOTE:

Bearings and distances on East B taken from Preliminary plan of QUEEN MARY'S TOWNE by M.S. MANUS, M. ROCK & M.S. MANUS

NOTE:

Bearings and distances on West B Computed from B offsets shown on Highway Plans for ROUTE # 64

ROUTE # 64



AREA = 13.5 ACRES ±

A is low water line 204'

6-25

1 = 200

13.5±

9/4/63

FLAT
Property of
CREEK INC.
conveyed to