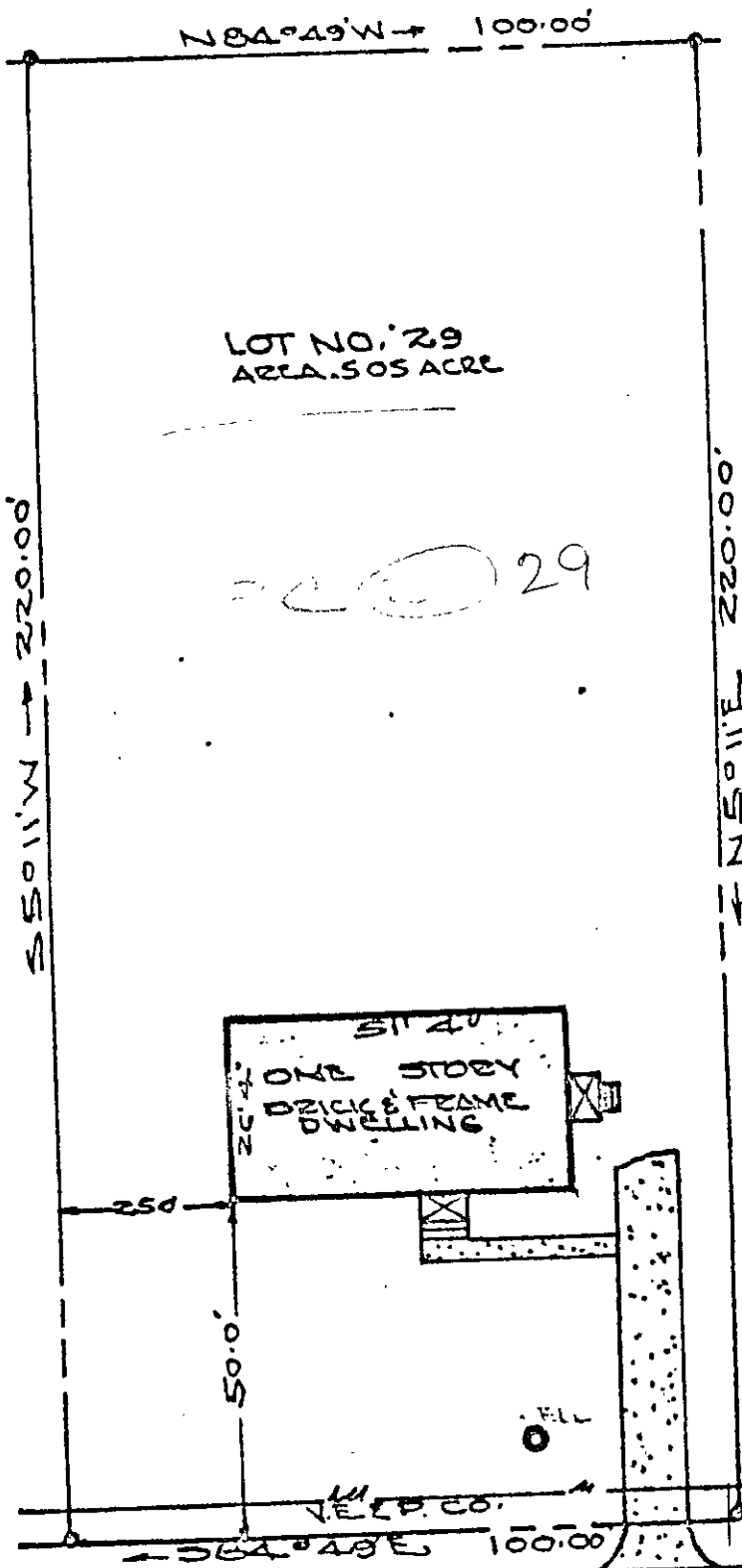


LEVINSON LIVESTOCK INC.

#30

\*28



VIRGINIA STATE ROAD NO. 646 (COPPAHOSIC) RD.

RECORD MEASUREMENT

BRITTON DIST. YORK COUNTY VIRGINIA  
 "SCIMMINO FARMS SUBDIVISION"  
 PLAT SHOWING BOUNDARY SURVEY AND  
 LOCATION OF IMPROVEMENTS LOT NO. 29  
 SURVEYED BY  
 JOHN BLAND ANDREY LEE HITE,  
 MARCH 17, 1925 SCALE 1" = 30'  
 IRON PILE MARKERS SHOWN

REGISTERED PROFESSIONAL SURVEYOR  
 VIRGINIA  
 JOHN BLAND ANDREY LEE HITE  
 1925

NBP