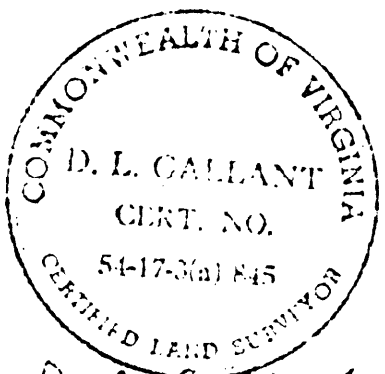
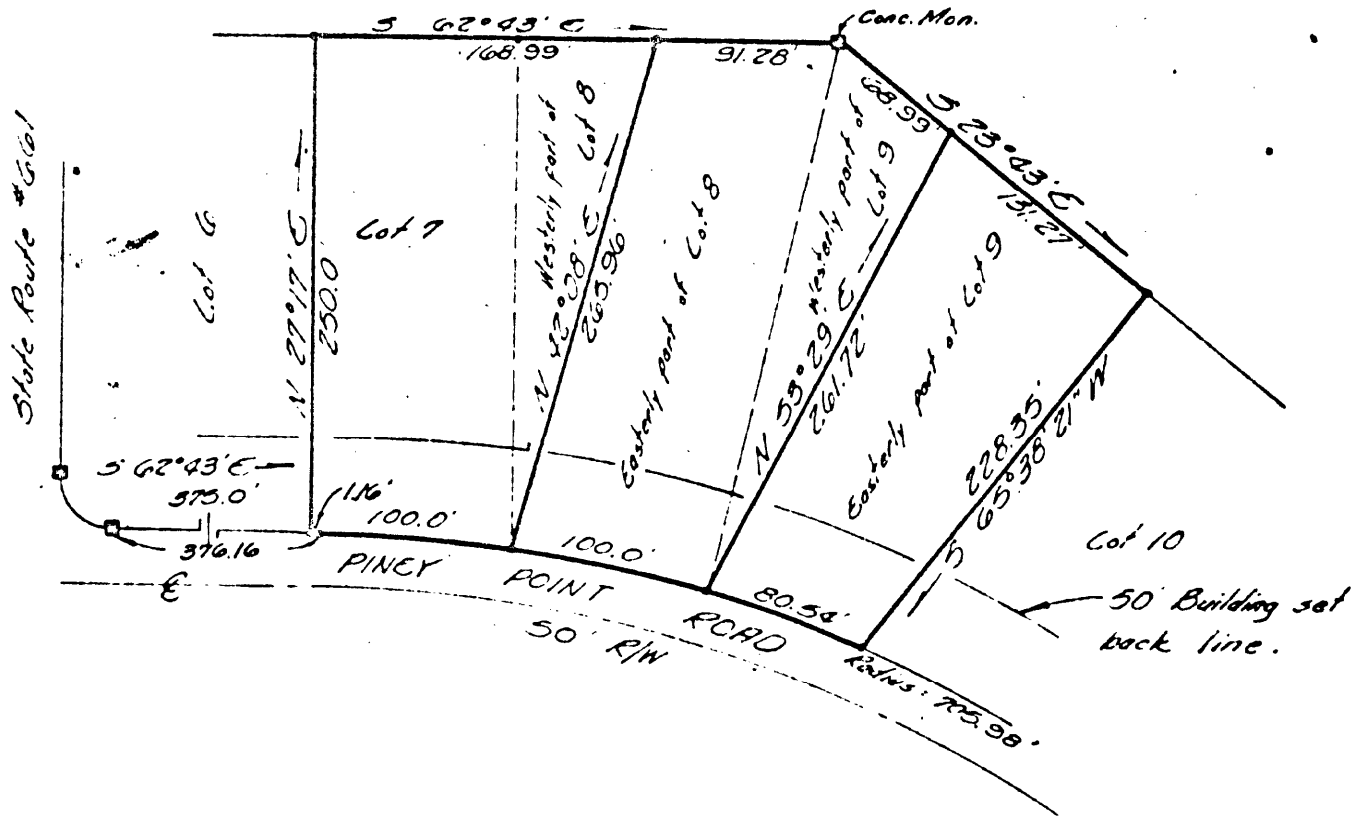


ELVIRA B. WOODS



D. L. Gallant

30 P ① 7 + 8A

REDIVISION
 of
 LOTS 7, 8 & 9
 PINEY POINT ESTATES
 SECTION ONE
 YORK COUNTY, VA.

COENEN & ASSOCIATES, ENGINEERS
 NEWPORT NEWS, VIRGINIA
 SCALE 1" = 100'
 DATE May 6, 1964