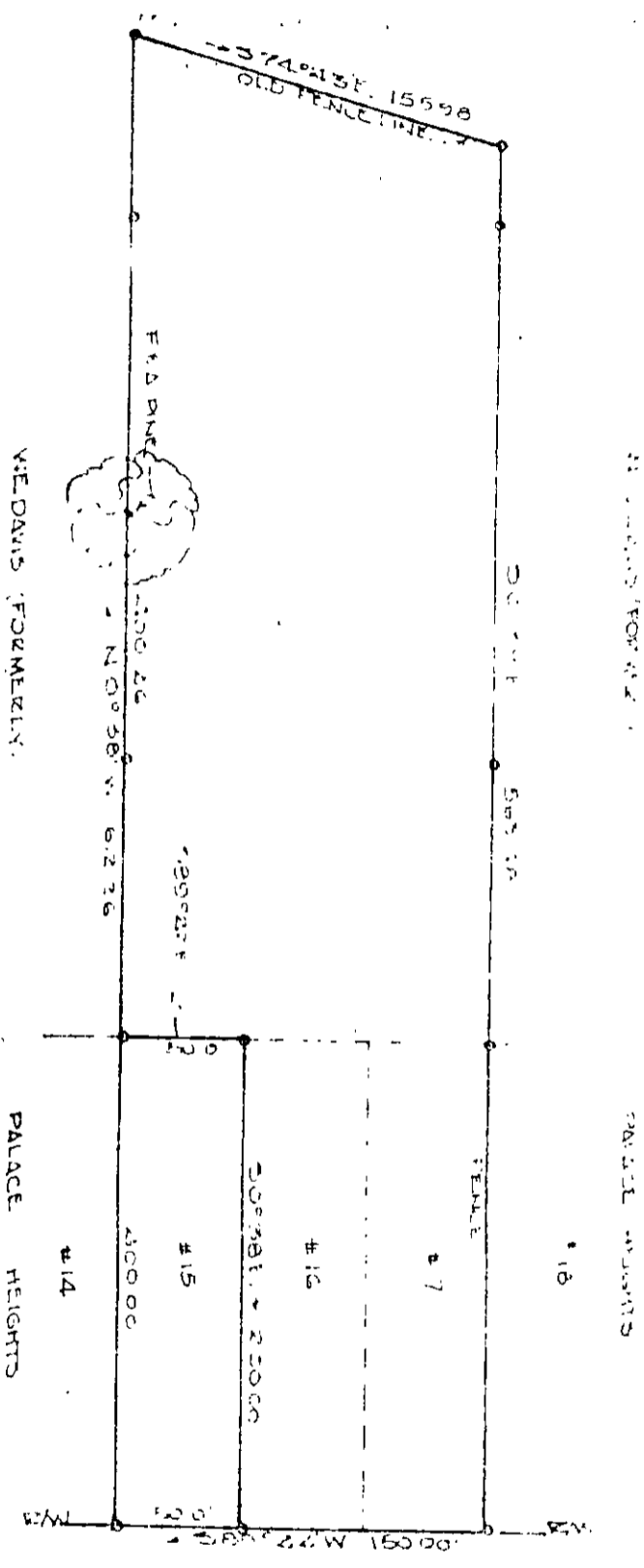


SCOTT



SECTION INTERSECTION

BEUTON DIST. YORK COUNTY VIRGINIA
 PLAT SHOWING BOUNDARY SURVEY OF
 LAND FOR DW STEEL ERECT STRUCTURE
 BEING PART OF THE PALACE HEIGHTS SUB-
 DIVISION AND MARGINAL LAND
 MAY 12 1963
 BEUTON DIST. YORK COUNTY
 IRON PIPE WELDED SHOVING

VIRGINIA STATE HIGHWAY ROUTE 602

9A-1-15, 16 & 17