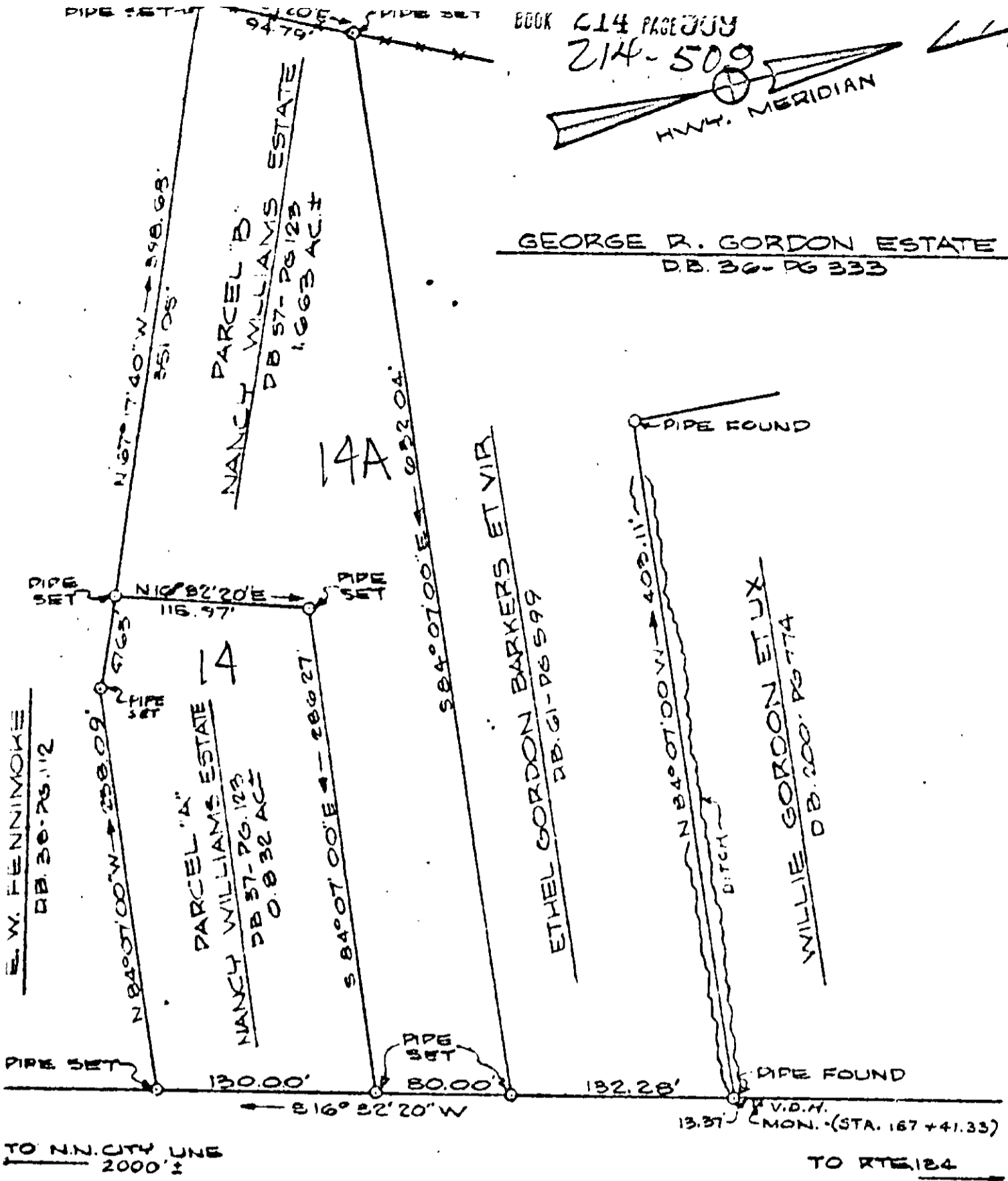


GEORGE R. GORDON ESTATE
D.B. 36- PG 333



ROUTE 17
(160' R/W)

REFERENCES:
 P.B. 1 - Pgs. 54 & 55
 D.B. 72 - Pg. 41



<p>PLAT SHOWING PROPERTY OF NANCY WILLIAMS ESTATE</p>	
<p>BEING PART OF THE CALLOHILL PRESSON TRACT SITUATED ON ROUTE 17 BETHEL DISTRICT, YORK COUNTY, VIRGINIA</p>	
SCALE: 1" = 80'	JULY 3, 1968
<p>S. J. GLASS & ASSOCIATES ENGINEERING SERVICES - HAMPTON, VIRGINIA</p>	
P. F. NO. A-W-164	FIELD WORK BY: L.B. JR.