

RECORD MERIDIAN

BLOXLEY

N 82° 51' E 643.22'

AREA 1.747 ACRES

S 28° 51' W 641.79'

Lewis F. GOEL, EST.

S 81° 53' W 266.57'

85.60'

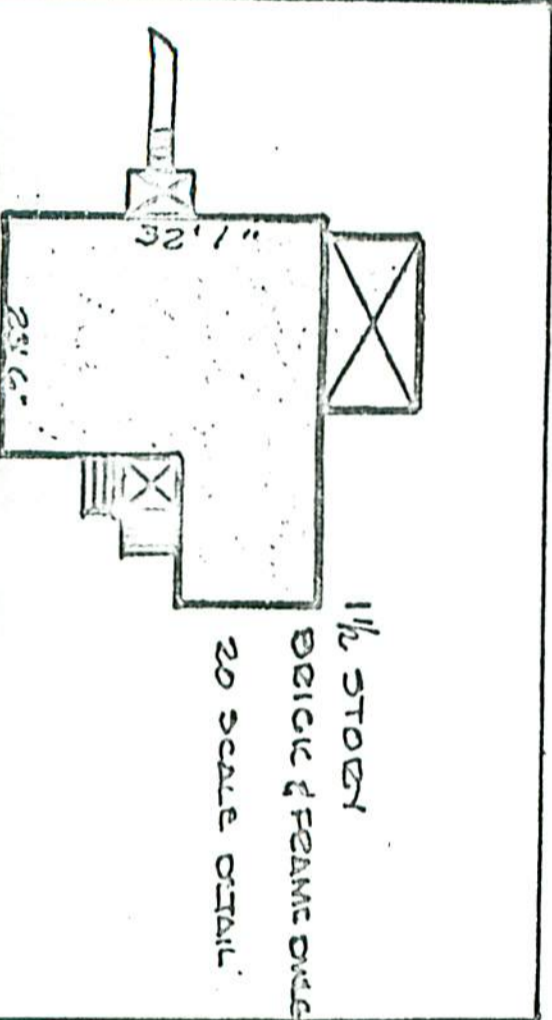
1 1/2 STORY BRICK FRAME DWG. SEE DETAIL

N 83° 22' E 120.10'

10-83

152.15 TO CORNER PROPERTY
GINGLEY PROP.

BLAZED DEC 9 1960



BRUTON DIST. YORK CO. VA. RECORDS
 PART OF THE WILLIAM A. GOEL RECORDS
 PROPERTY.
 PLAT SHOWING BOUNDARY SURVEY AND
 IMPROVEMENTS OF A PORTION OF THE
 FOREST W. HENRY & LORRAINE HENRY
 DEC 13 1960
 REVISIT 1961
 PREPARED BY
 WILLIAM A. GOEL
 CHARLESBORO, VIRGINIA

REGISTERED SURVEYOR
 LAND SURVEYOR 181