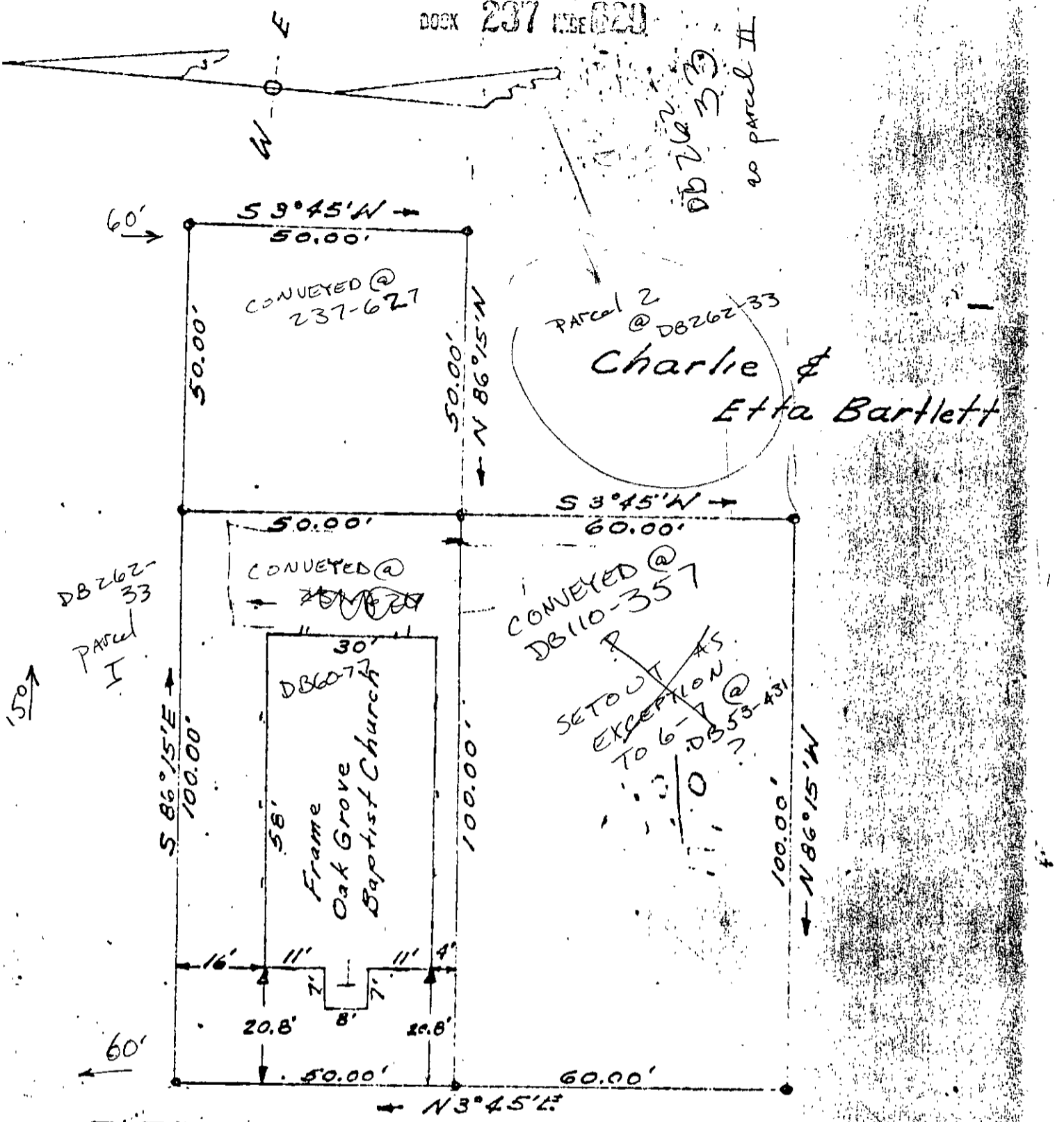


BOOK 237 PAGE 629



16' Surf. Tr. Road Rte. 604 To Rte 60
30' R/W

PROPERTY PLAT
FOR
OAK GROVE BAPTIST CHURCH REAR LINE
YORK COUNTY, VA.

MIKE'S NOTE:
SEE 6-7 FOR
REAR LINE

SCALE 1" = 25' . AUG, 1962
W. D. THOMAS
W. D. THOMAS
AUG. 6, 1977

2 COPIES

PART OF
6-6