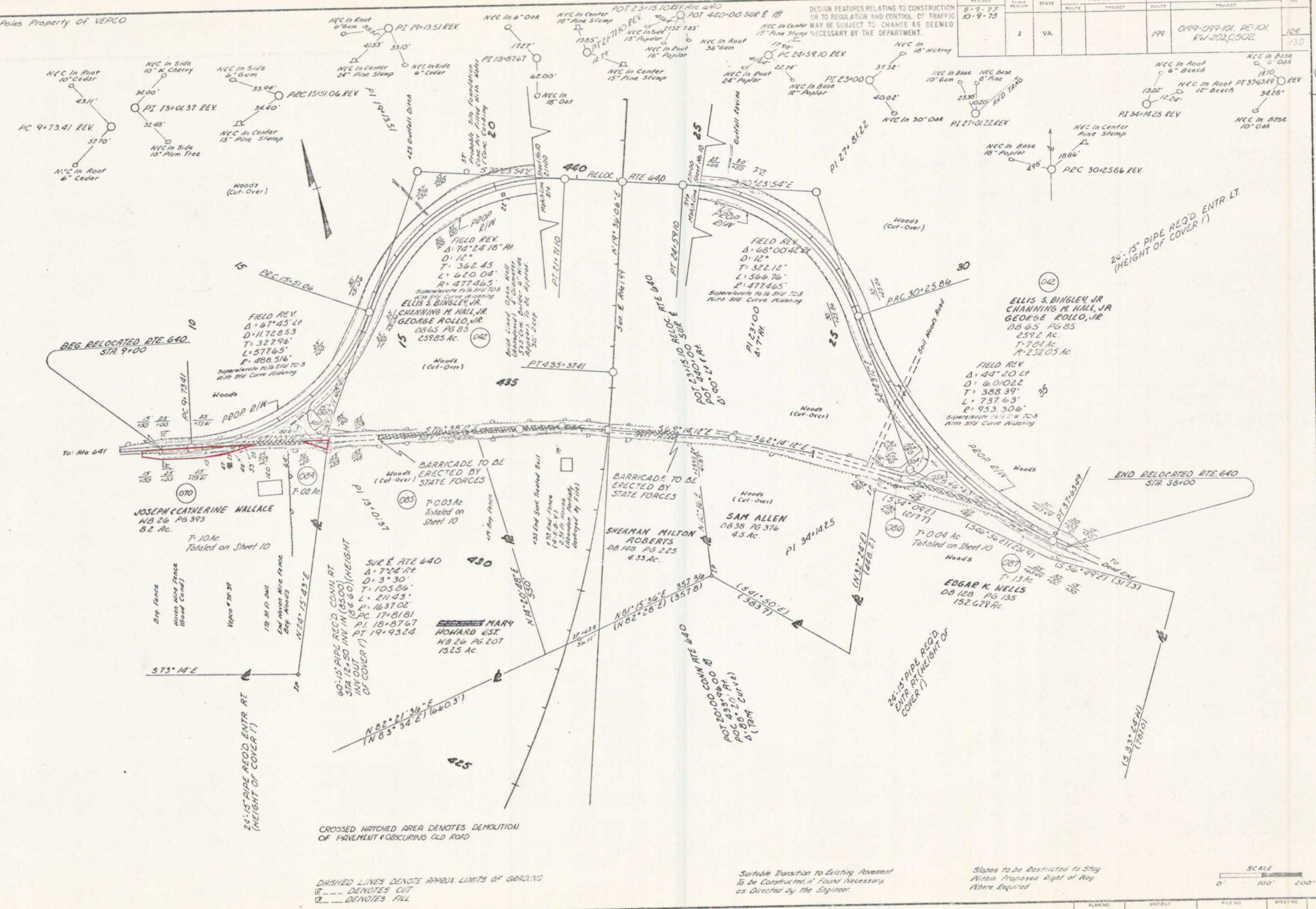


REVISED	BY	DATE	STATE	FEDERAL AID	ROUTE	PROJECT	STATE	PROJECT	SHEET NO.
8-9-75		10-9-75	VA.		199	0199-099-101, PE-101, RW-202, C-502			10E 130

SUFFOLK DISTRICT DESIGN UNIT

Power Poles Property Of VEPCO

DESIGN FEATURES RELATING TO CONSTRUCTION OR TO REGULATION AND CONTROL OF TRAFFIC MAY BE SUBJECT TO CHANGE AS DEEMED NECESSARY BY THE DEPARTMENT.



AN	SURVEYED	PLOTTED	CHECKED	INTEGRATED
	G. M. SHONALTER	R. W. HARR	R. W. HARR	R. W. HARR

CROSSED HATCHED AREA DENOTES DEMOLITION OF PAVEMENT OBLSCURING OLD ROAD

DASHED LINES DENOTE APPROX LIMITS OF GRADINGS  
 --- DENOTES CUT  
 --- DENOTES FILL

Suitable Transition to Existing Pavement to be Constructed, if Found Necessary, as Directed by the Engineer.

Slopes to be Restricted to Stay Within Proposed Right of Way Where Required





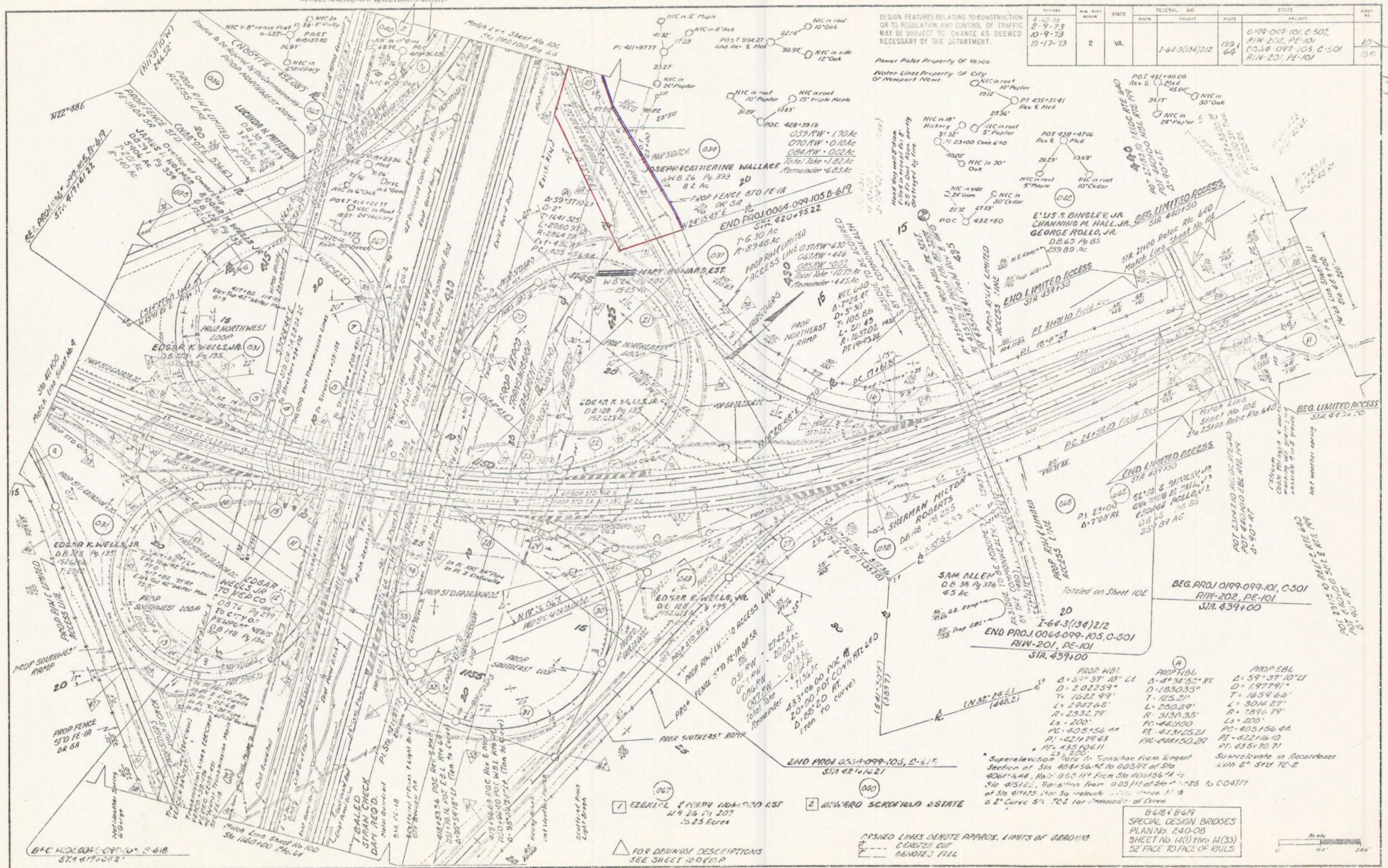




SUFFOLK DISTRICT DESIGN UNIT

DESIGN FEATURES RELATING TO CONSTRUCTION OR TO REGULATION AND CONTROL OF TRAFFIC MAY BE SUBJECT TO CHANGE AS DEEMED NECESSARY BY THE DEPARTMENT.

REVISED	FOR ROAD	STATE	FEDERAL AID	PROJECT	ROUTE	STATE	SHEET NO.
8-10-73							
8-9-73							
10-9-73							
10-17-73							
	2	VA.		1-64-3(134)212	199		
					64		
						0199-099-101, C-501	10
						R/W-201, PE-101	130
						0054-099-105, C-501	
						R/W-201, PE-101	



PLAN	SURVEYED	PLOTTED	TRACED	OWNER	DATE
5-70	G.W. SHAWLITER				
1-60	J.V. JOYNER				
7-70	J.V. JOYNER				
7-70	J.V. JOYNER				
5-70	J.V. JOYNER				

PROF. W.B.I.	PROF. H.B.L.	PROF. E.B.L.
$\Delta = 59^{\circ} 37' 10''$ LT	$\Delta = 34^{\circ} 52' 31''$ RT	$\Delta = 59^{\circ} 37' 10''$ LT
$D = 202359'$	$D = 183035'$	$D = 197791'$
$T = 162299'$	$T = 12521'$	$T = 165966'$
$L = 298768'$	$L = 25029'$	$L = 301427'$
$R = 283279'$	$R = 313032'$	$R = 289679'$
$L_s = 200'$	$L_s = 200'$	$L_s = 200'$
$PC = 405156.44'$	$PC = 443100'$	$PC = 405156.44'$
$PT = 413125.21'$	$PT = 413125.21'$	$PT = 413125.21'$
$PI = 421794.43'$	$PI = 444150.29'$	$PI = 421794.43'$
$Pt = 435104.11'$		$Pt = 435104.11'$
$LS = 200'$		$LS = 200'$

\* Super-elevation Data to Transition from Tangent Section of Sta 404+56.44 to 405+11 from Sta 405+16 to 406+144. Ho: 0.0511' from Sta 405+16 to 406+144. Ho: 0.0511' from Sta 405+16 to 406+144. Ho: 0.0511' from Sta 405+16 to 406+144. Ho: 0.0511' from Sta 405+16 to 406+144.

B-618 & B-619  
SPECIAL DESIGN BRIDGES  
PLAN No. 240-08  
SHEET No. 14(1) thru 14(33)  
52' FACE TO FACE OF RAILS

7 ELEGANT & WARD 100 AC EST  
49 26 P. 207  
10.25 Acres

2 WARD SCROFIELD ESTATE

DASHED LINES DENOTE APPROX. LIMITS OF GRADING  
--- DENOTES CUT  
--- DENOTES FILL

FOR DRAINAGE DESCRIPTIONS  
SEE SHEET 100-11P