

VDH 300' R/W

WBL

VDH 1-64 300' R/W

EBL

APPROVED
 BOARD OF SUPERVISORS

Wm. J. Hester
 8-21-72

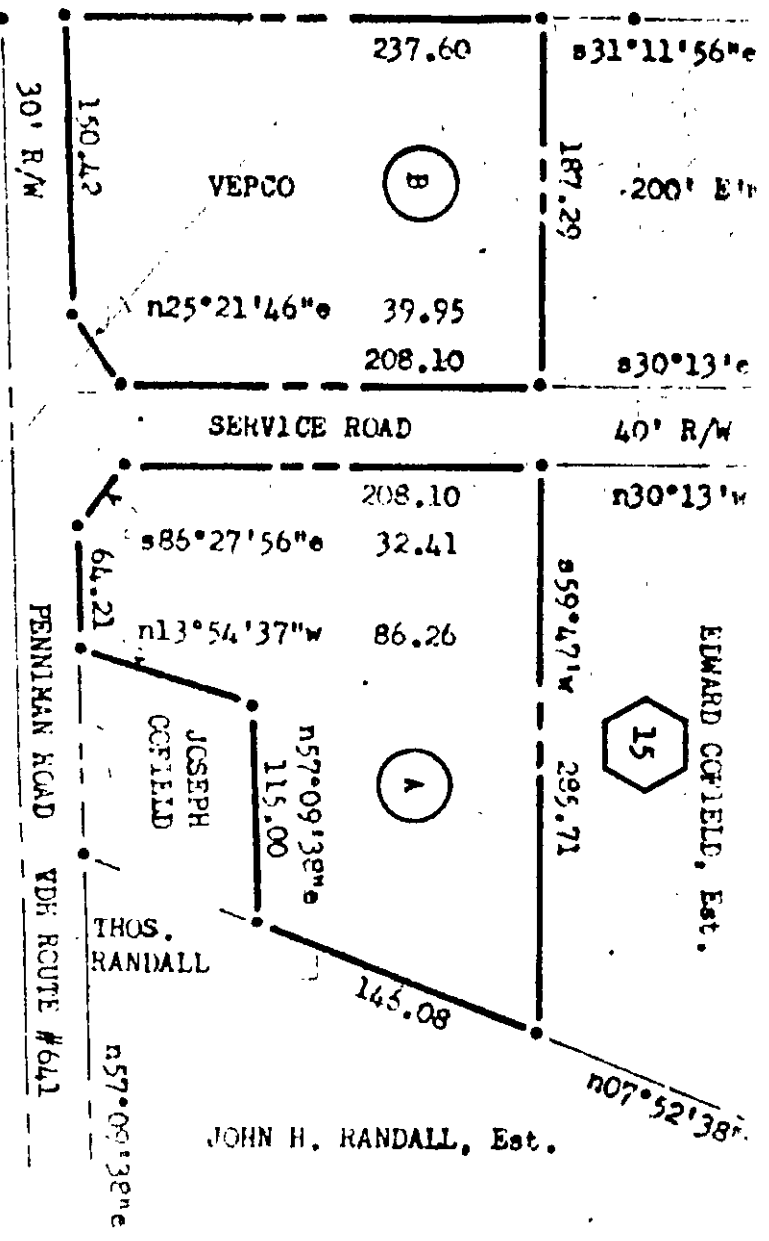
NOTE:

Markers at all corners.
 Bearings are clockwise.
 Ref.: D.B. #38, p. #255,
 61.

VEPCO Chesterfield, NACA, JO#8623, Sh.#34.
 VDH, 1-64, Proj.# 0054-0099-101, FM201, Sh.#12.
 AREA: Parcel 1 W/W = 1.015 Acre,
 W/W = 0.985

TOTAL 2.000 Acres.

RESIDUAL = S. 2 ACRES S.S.



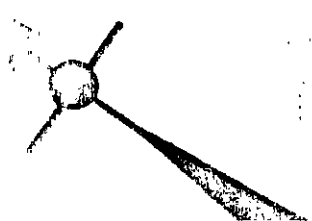
VEPCO 200' E'ment.

30' R/W

PENNIMAN ROAD VDH ROUTE #641

R. F. SPOFFORD

Tax Map 11 (5) A+B



PLAT OF

Within: LOT 115, DISTRICT OF

PROJECT

EDWARD COFFIELD, ESTATE

Also known as: THEODORE EDWARD COFFIELD

to be conveyed to:

THEODORE EDWARD COFFIELD, ESTATE

Scale: 1" = 100'

BRUNSON DISTRICT, YORK COUNTY, SOUTH CAROLINA