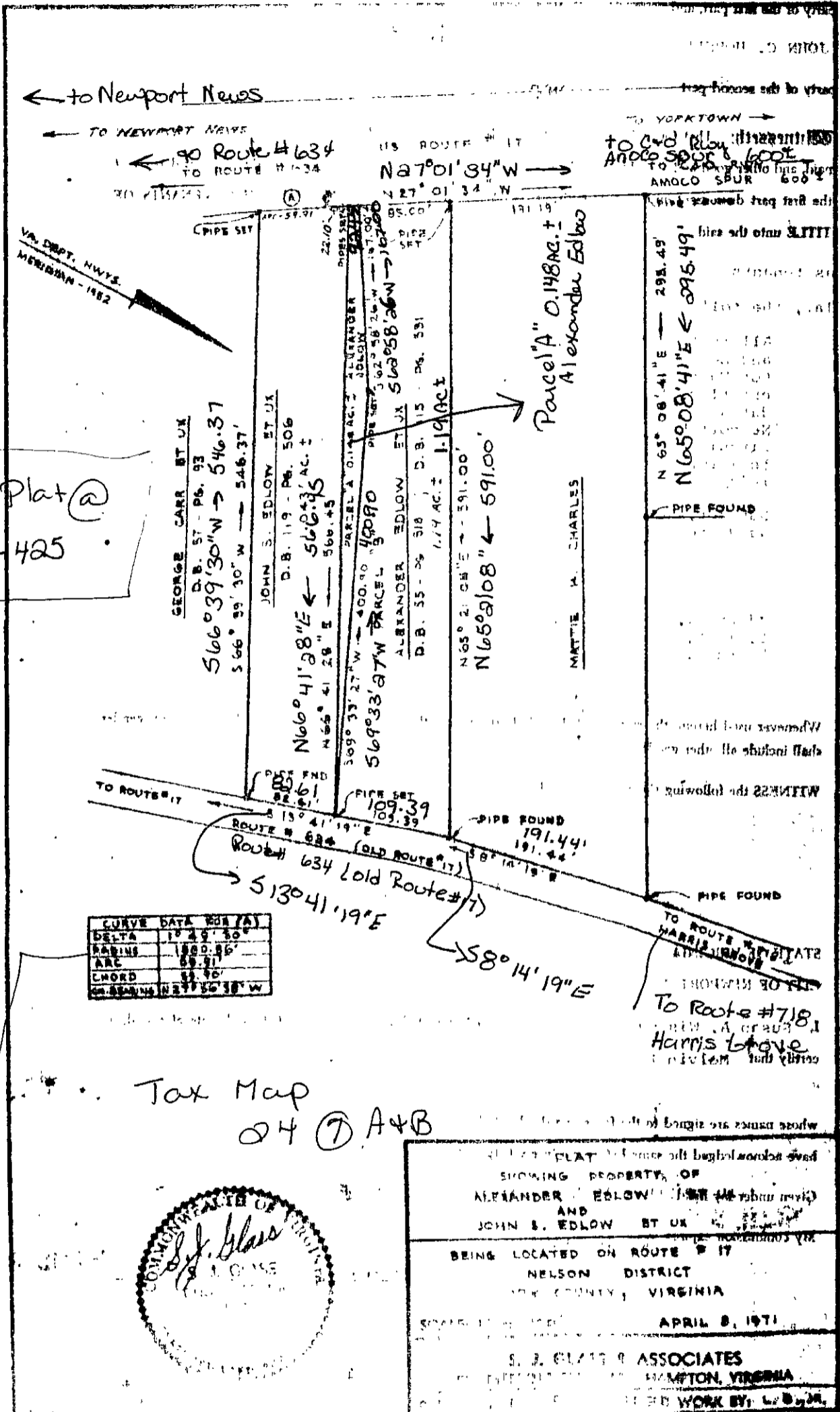


294-439

BOOK 294 PAGE 439

PLAT # 110



Same Plat @
236-425

CURVE DATA FOR (A)	
DELTA	104° 49' 30"
RADIUS	188° 86'
ARC	69.91
CHORD	59.90
CHORD BEARING	N 27° 56' 38" W

Tax Map
24 (7) A+B



PLAT SHOWING PROPERTY OF
ALEXANDER EDLOW et ux
AND
JOHN S. EDLOW et ux
BEING LOCATED ON ROUTE # 17
NELSON DISTRICT
YORK COUNTY, VIRGINIA
APRIL 8, 1971
S. J. GLASS & ASSOCIATES
HARRIS GROVE
WORK BY: L. B. J.

Curve Data for (A)

Delta	104° 49' 30"
Radius	188° 86'
ARC	69.90
Ch Bearing	N 27° 56' 38" W

Plat Showing Property of
Alexander Edlow et ux
AND
John S. Edlow et ux
Being located on Route # 17
Nelson District
York County, Virginia
State 1"=100' April 8, 1971