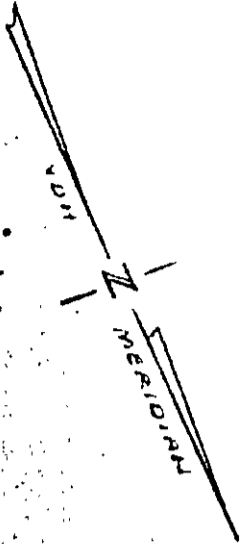
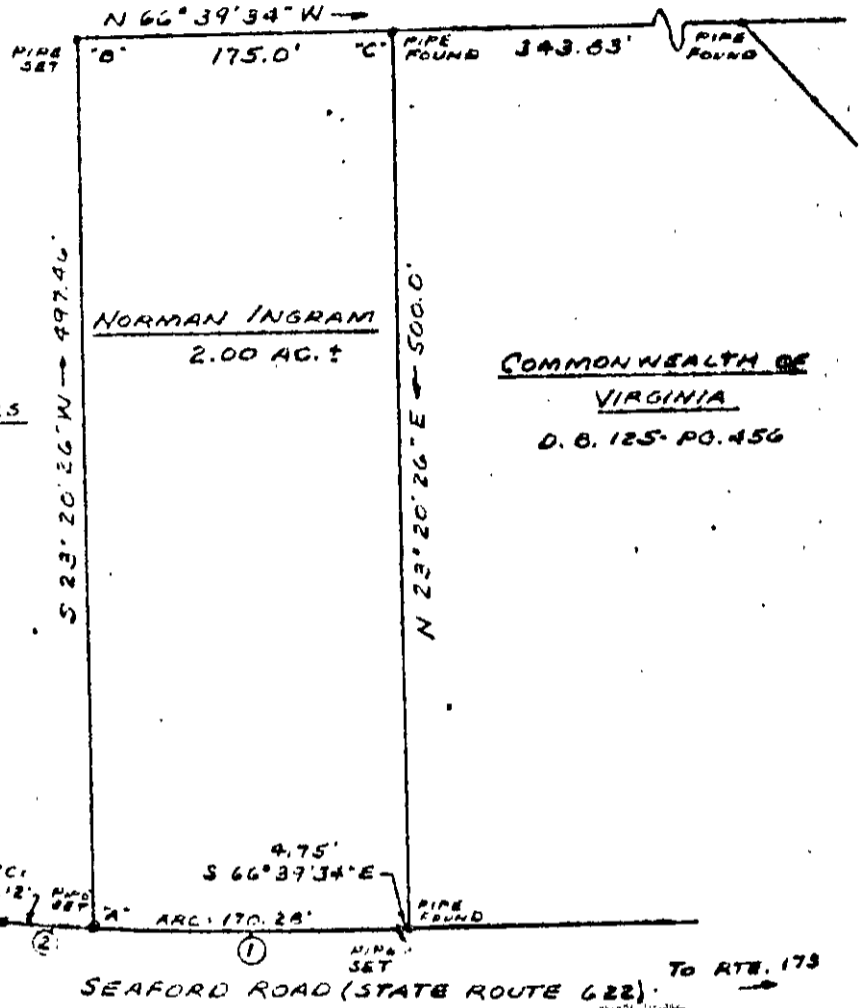


294-789



W.B. 32 - PG. 247  
 D.B. 119 - PG. 246  
 D.B. 165 - PG. 235

OWEN W. S.  
 JULIA SPENCER MYERS  
 W.B. 32 - PG. 247  
 D.B. 119 - PG. 246  
 D.B. 165 - PG. 235



COMMONWEALTH OF  
 VIRGINIA  
 D. B. 125 - PG. 456

NOTE: LINES "A-B" AND "B-C"  
 SUBJECT TO BOUNDARY  
 LINE AGREEMENT.

CURVE DATA:

	①	②
DELTA	1° 42' 37"	0° 25' 23"
RADIUS	5704.58'	5704.58'
ARC	170.28'	42.12'
TANGENT	85.15'	21.06'
CHORD	170.27'	42.12'
CHORD BEARING	S 65° 48' 15" E	S 64° 44' 16" E



PLAT  
 SHOWING PROPERTY OF  
 NORMAN INGRAM  
 BEING LOCATED ON SEAFORD ROAD  
 GHAFTON DISTRICT  
 YORK COUNTY, VIRGINIA  
 SCALE: 1" = 100'      NOVEMBER 5, 1976  
 S. J. GLASS & ASSOCIATES  
 ENGINEERING SERVICES - HAMPTON, VIRGINIA  
 P. F. NO. A. 1-12      FIELD WORK BY: L. S. R.

76-78

24-249