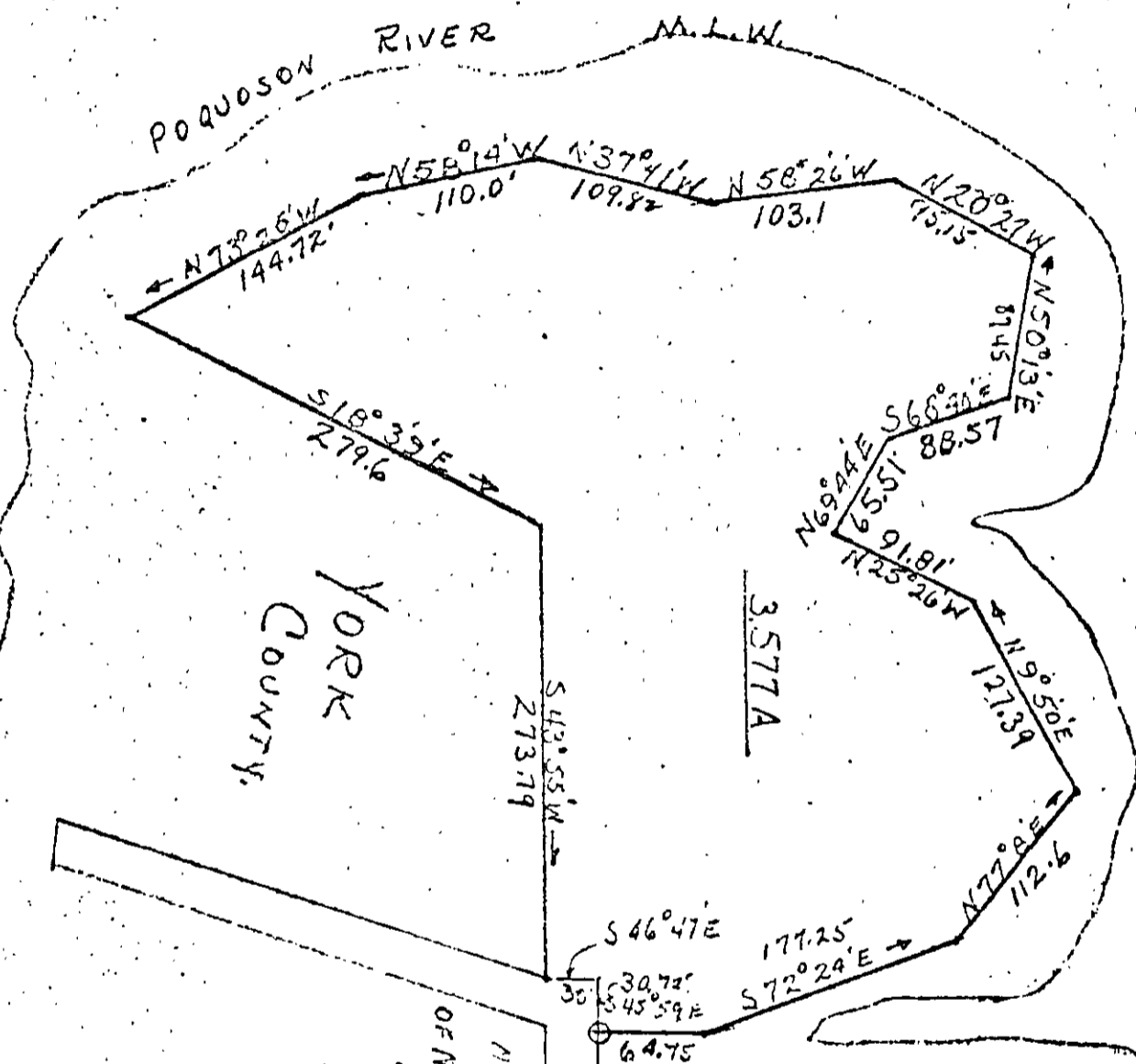


POQUOSON RIVER

M.L.W.

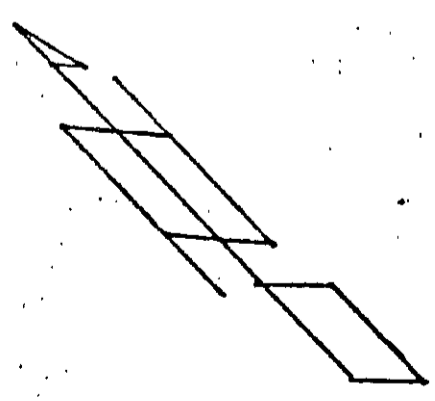


YORK COUNTY

3.577A

N.V. Combs

TIDE MILL RO. 30'



A PLAT OF PART OF THE PROPERTY OF NANCY RUSSELL HOPSON/MI BETHEL MAG. DIST. YORK CO, VA. RALPH D. WITTR RE SCALE 1"=100' TAKEN FROM A PLAT RECORDED IN PLAT BOOK 1 PAGE 205 IN THE CLERKS OFFICE, YORK CO, PLAT BY O.H. WEISS.

FEB. 1973

30-207