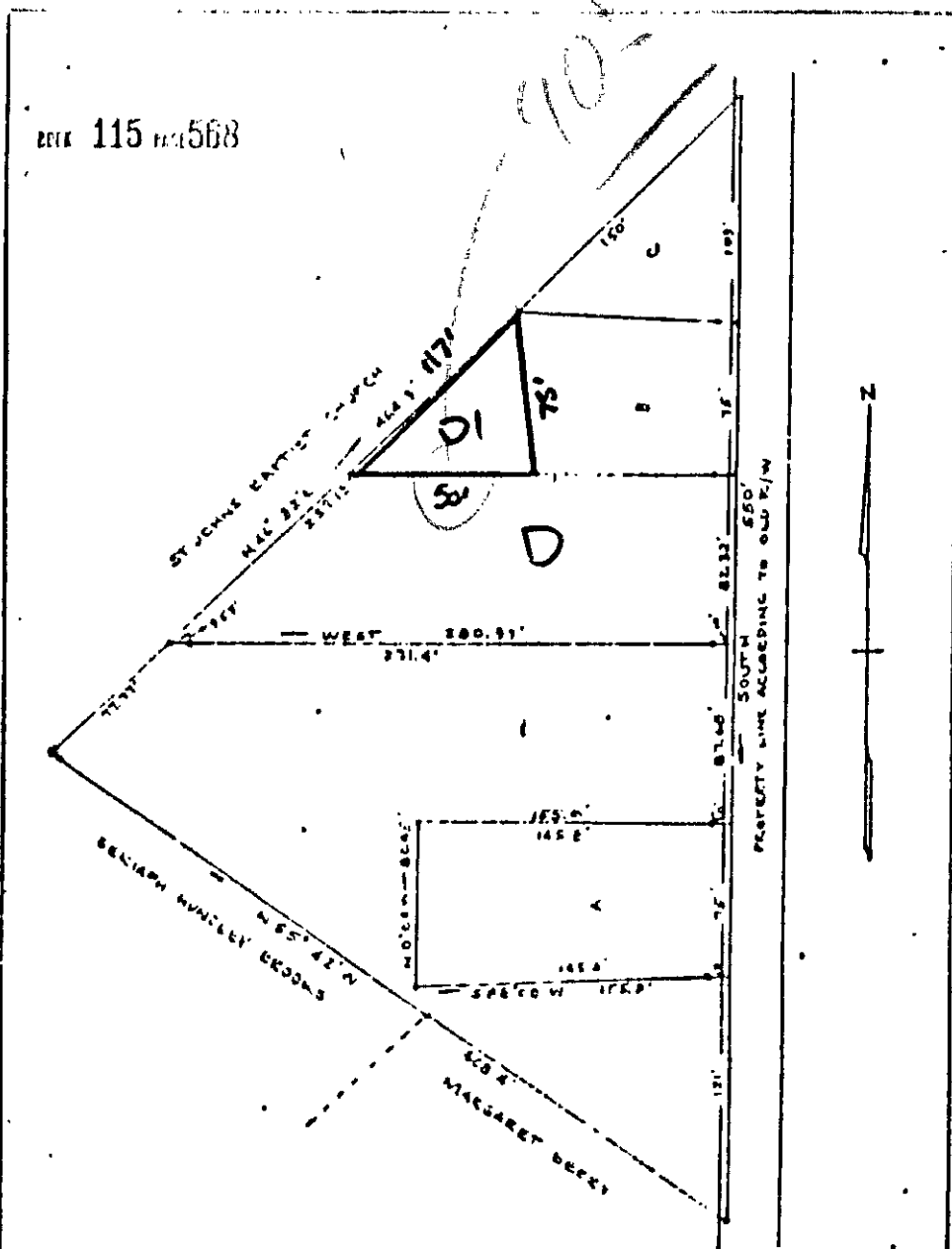


543 527

11 FEB 1957

BOOK 115 PAGE 568



* PLAT SHOWING PARCELS OF LAND AS FOLLOWS: PARCELA - PETE & ALMA LOBLEY, PARCELA B - DAVID & KATHERINE STRAILKY, PARCELA C - ST. JOHN'S BAPTIST CHURCH, REMAINDER OF LAND LULA LEE SITUATED IN YORK COUNTY, VA. SURVEYED FEB. 1957

SCALE 1" = 60'
W. D. THOMAS - C.L.S. #79
National F. Survey

VIRGINIA County of York Books
In the Clerk's Office of the Circuit Court for the County of
York, Va. this 8th day of March 1957
Filed and recorded with the certificate annexed and attested
to record at 9:00 o'clock P.M.
T. B. BRIVILLE, Esq., Clerk
By: *Edith W. Bonds*, Deputy Clerk

NOT A SUBJECT TO DUES COLLECTION

11 F (2) D1, D