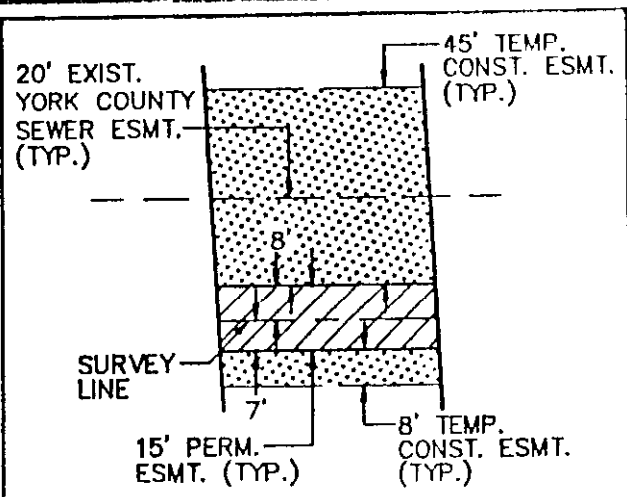
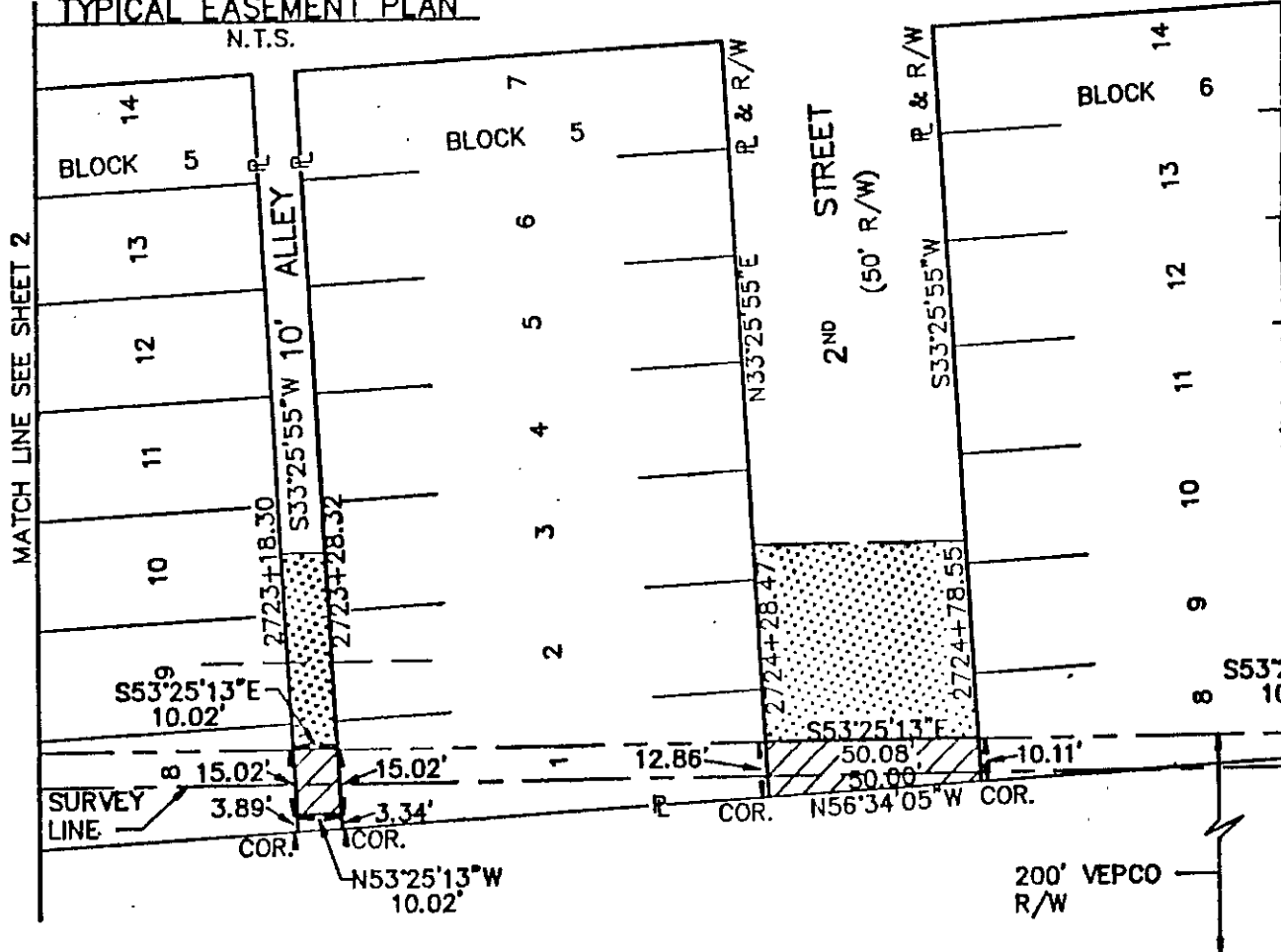


SHELDON B
VINEYARD

HUNTINGT
(5)



TYPICAL EASEMENT PLAN
N.T.S.



TOTAL AREA WITHIN STREETS

AREA INSIDE VEPCO R/W:
 PERM: 0.10 AC.
 TEMP: 0.05 AC.

 AREA OUTSIDE VEPCO R/W:
 TEMP: 0.37 AC.

TOTAL AREA WITHIN ALLEYS

AREA INSIDE VEPCO R/W:
 PERM: 0.02 AC.
 TEMP: 0.009 AC. (356 SQ.FT.)

 AREA OUTSIDE VEPCO R/W:
 TEMP: 0.07 AC.

MERIDIAN SOURCE: VIRGINIA COORDINATE SYSTEM OF 1927 (SOUTH ZONE)

11A(1) 2nd STREET +
10' ALLEY