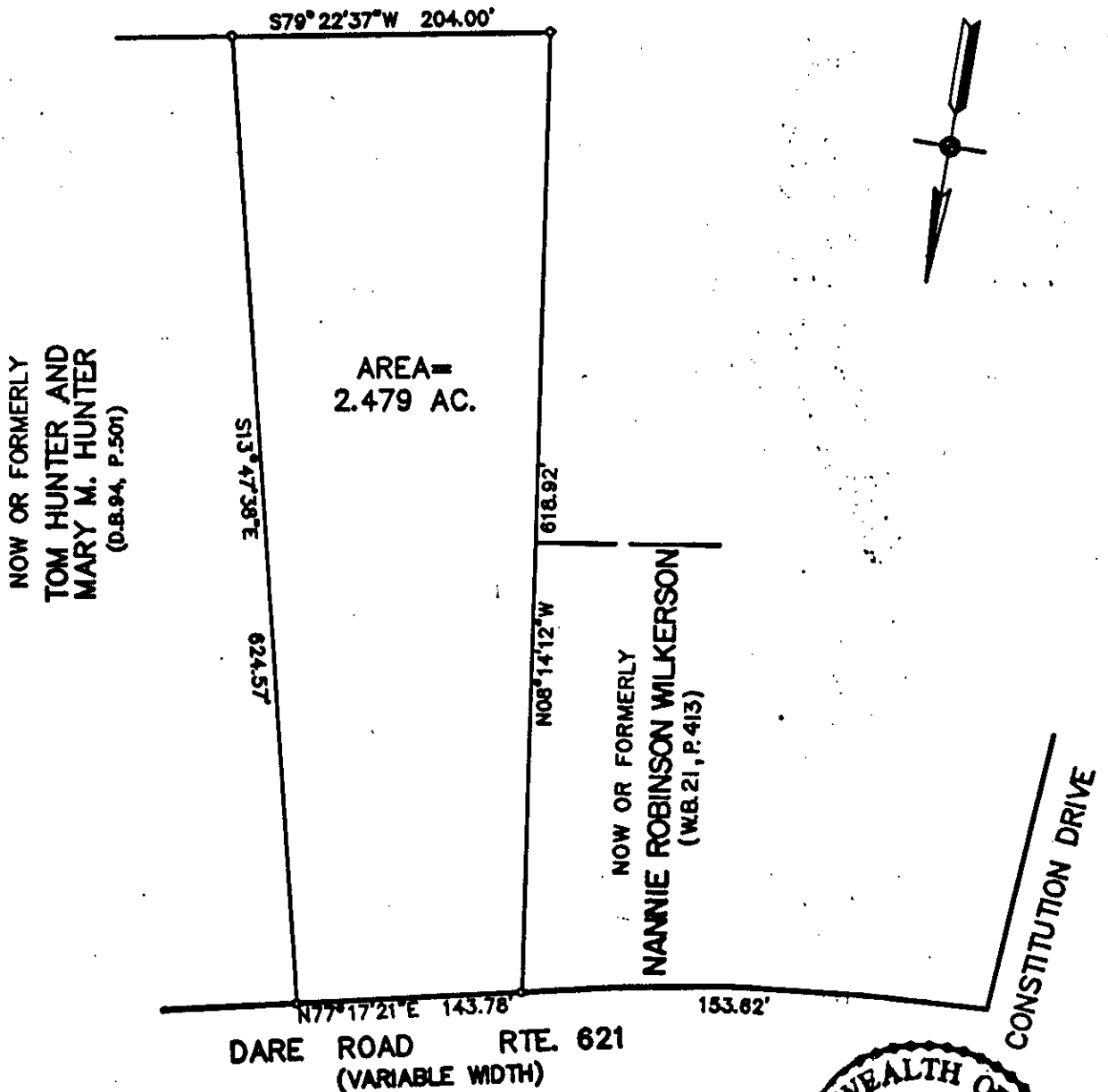
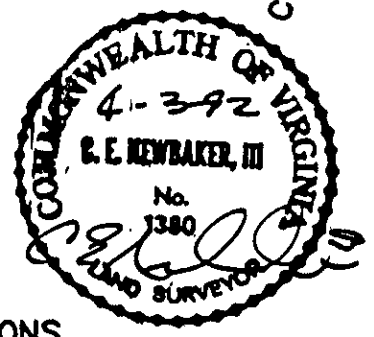


PARCEL Y
NOW OR FORMERLY
B.D. ASHE AND ROBERT F. RIPLEY, JR.
A VIRGINIA GENERAL PARTNERSHIP 1985
(P.B.10, P.144; P.B.10, P.143)



PLAT
OF
PROPERTY OF
CHARLIE DAMMONS & CHRISTINE H. DAMMONS
TO BE CONVEYED TO (D.B.152, P.519)
1991 ASHE PARTNERSHIP,
A VIRGINIA GENERAL PARTNERSHIP
GRAFTON DISTRICT COUNTY OF YORK, VIRGINIA
SCALE: 1"=100' APRIL 3, 1992



THE SIRINE GROUP, LTD.
SURVEYORS • ENGINEERS • PLANNERS
WHITE MARSH, VIRGINIA