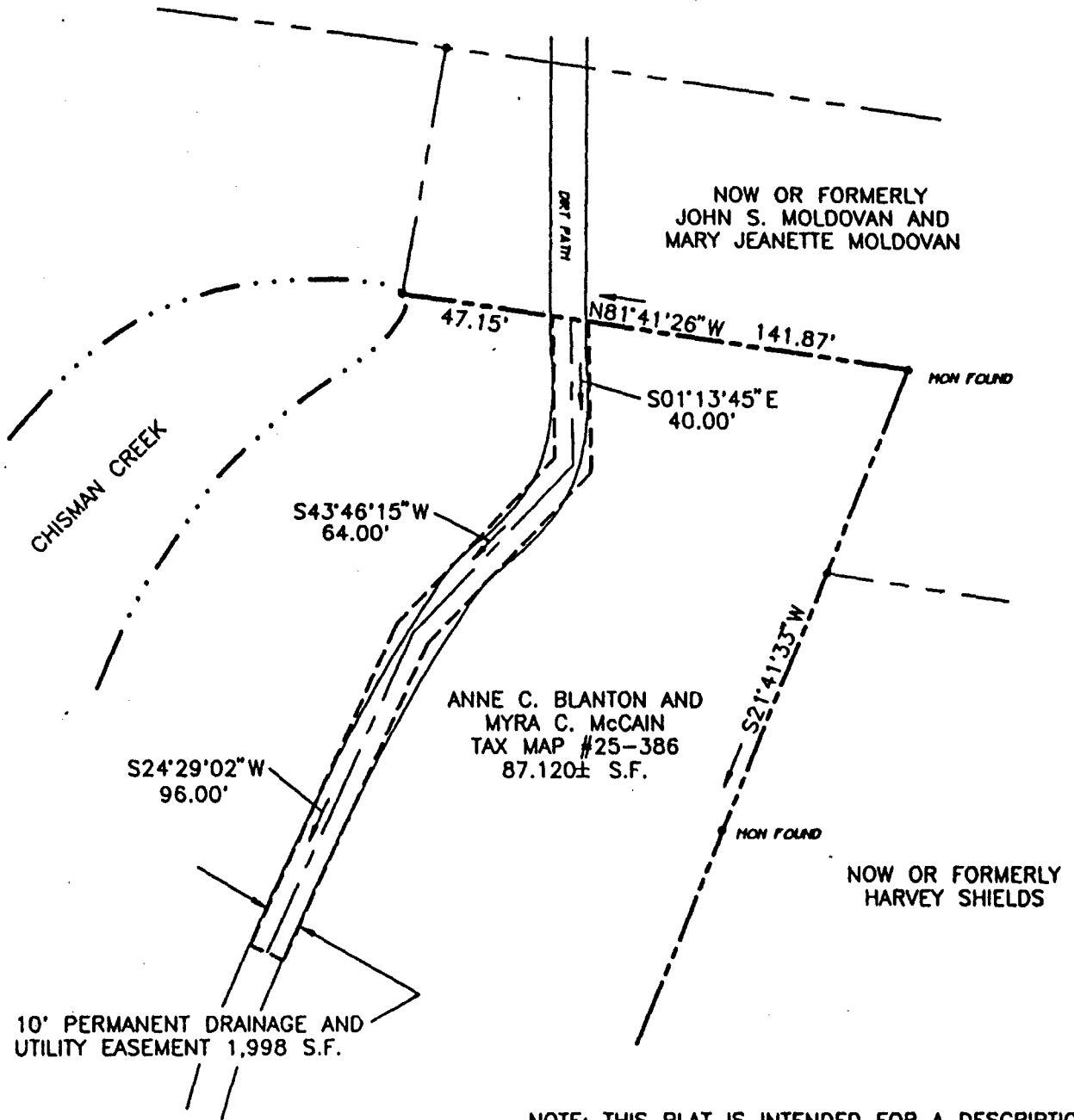
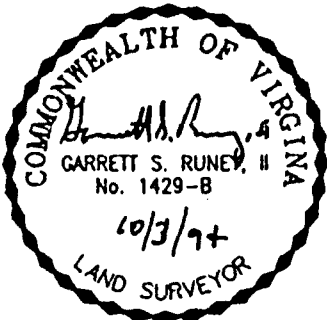


BK0838PG0904

SPARRER ROAD (STATE ROUTE #624)



NOTE: THIS PLAT IS INTENDED FOR A DESCRIPTION OF EASEMENT ONLY, AND DOES NOT CONSTITUTE A BOUNDARY SURVEY.



REFERENCE:

D.B. 525 P.G. 167
D.B. 311, PG. 481

PLAT OF EASEMENT

FROM: ANNE C. BLANTON AND MYRA C. McCAIN
TO: COUNTY OF YORK, VIRGINIA
PROJECT: SEAFORD AREA SANITARY SEWER

MERIDIAN BASED ON
D.B. 311, PG. 481

DATE: 10/3/94

SCALE: 1"=40'

DRAWN: PWM **NO:** 94-802



SLEDD, RUNEY & ASSOCIATES, P.C.
ENGINEERS PLANNERS SURVEYORS
11832 ROCK LANDING DRIVE, SUITE 203
NEWPORT NEWS, VIRGINIA 23606
(804) 873-3386