

Design File - c:\documents\cfms_jaas\ref\14627\14627004.dgn Ref. File - c:\documents\cfms_jaas\ref\14627.dgn
Levels On - 1-50,52-63

Ref. File - c:\documents\cfms_jaas\ref\14627\14627004.dgn Ref. File - c:\documents\cfms_jaas\ref\14627.dgn
Levels On - 1-53,55-63

Ref. File - c:\documents\cfms_jaas\ref\14627\14627004.dgn Ref. File - c:\documents\cfms_jaas\ref\14627.dgn
Levels On - 1-63

Ref. File - c:\documents\cfms_jaas\ref\14627\14627004.dgn Ref. File - c:\documents\cfms_jaas\ref\14627.dgn
Levels On - 1-63

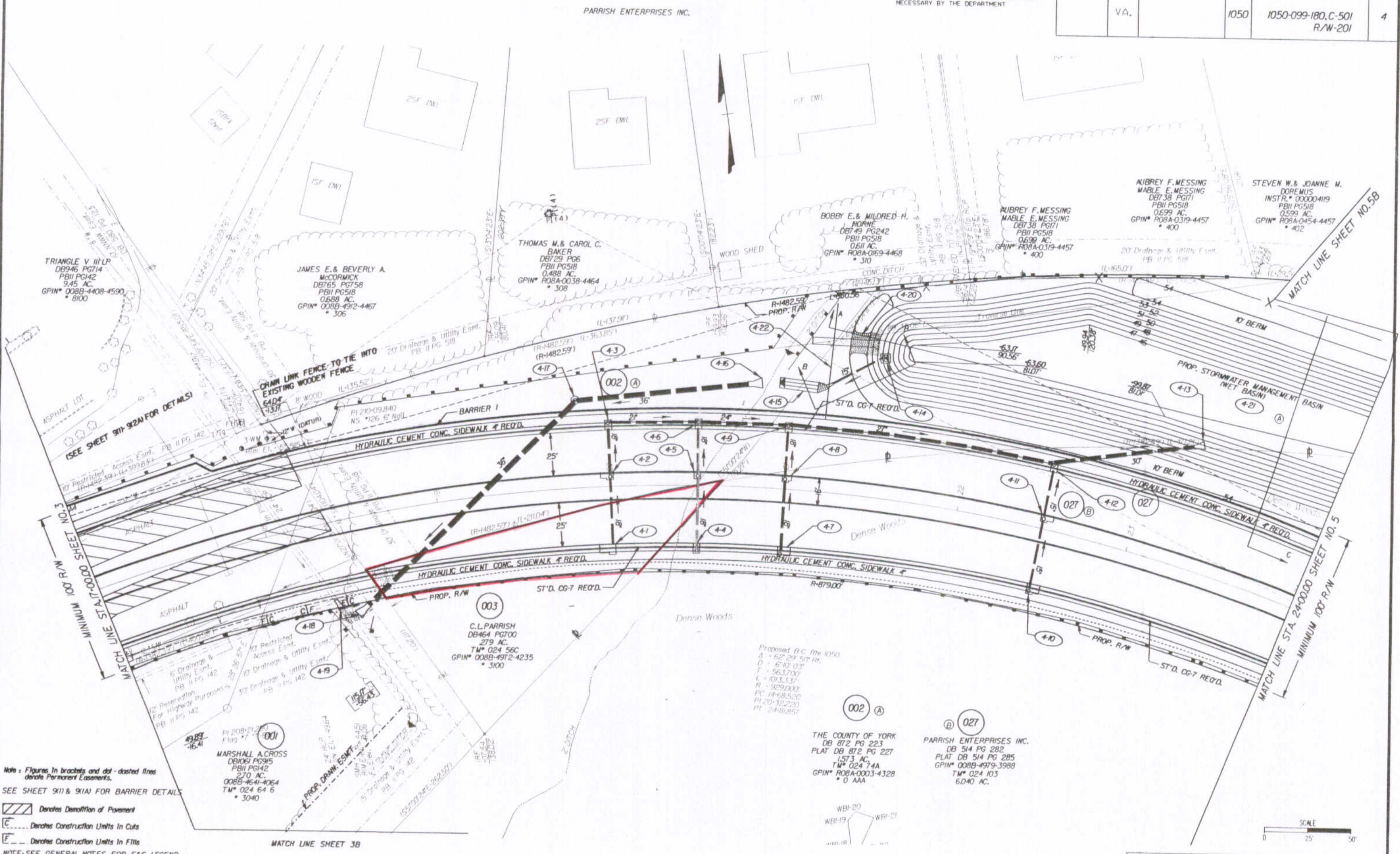
Ref. File - c:\documents\cfms_jaas\ref\14627\14627004.dgn Ref. File - c:\documents\cfms_jaas\ref\14627.dgn
Levels On - 1-60,62,63

Ref. File - c:\documents\cfms_jaas\ref\14627\14627004.dgn Ref. File - c:\documents\cfms_jaas\ref\14627.dgn
Levels On - 1-63

SURVEYED BY - ROBERT D. HANNAH
SUPERVISED BY - SONYA HALLUMS-PONTON (757) 925-2560
DESIGNED BY - J. DYANE GEORGE, (757) 925-3624
HAMPTON ROADS DISTRICT DESIGN UNIT

DESIGN FEATURES RELATING TO CONSTRUCTION OR TO REGULATION AND CONTROL OF TRAFFIC MAY BE SUBJECT TO CHANGE AS DEEMED NECESSARY BY THE DEPARTMENT

REVISED	STATE	FEDERAL AID PROJECT	ROUTE	STATE PROJECT	SHEET NO.
10-18-04	VA.		1050	1050-099-180.C-501 R/W-201	4



Note: Figures in brackets and dot-dashed lines denote Permanent Easements.
SEE SHEET 911 & 91A FOR BARRIER DETAILS

// Denotes Demolition of Pavement
C Denotes Construction Limits in Cuts
F Denotes Construction Limits in Fills
 NOTE: SEE GENERAL NOTES FOR E&S LEGEND

Proposed P.C. Pile 1050
 A - 62' 29" 50' R.
 D - 6' 10" 03"
 T - 56.3700
 L - 101.3337
 R - 929.0000
 PC - 14+68.520
 PI - 20+32.220
 P1 - 24+01.852

002 A
 THE COUNTY OF YORK
 DB 872 PG 223
 PLAT DB 872 PG 227
 1.573 AC.
 TM* 024 74A
 GPIN* ROBA-0003-4328
 * 0 AAA

027 B
 PARRISH ENTERPRISES INC.
 DB 514 PG 282
 PLAT DB 514 PG 285
 GPIN* 008B-4979-3988
 TM* 024 103
 6.040 AC.

PLAN NO.	PROJECT	FILE NO.	SHEET NO.
	1050-099-180		4

11/1/2004 15:25:45