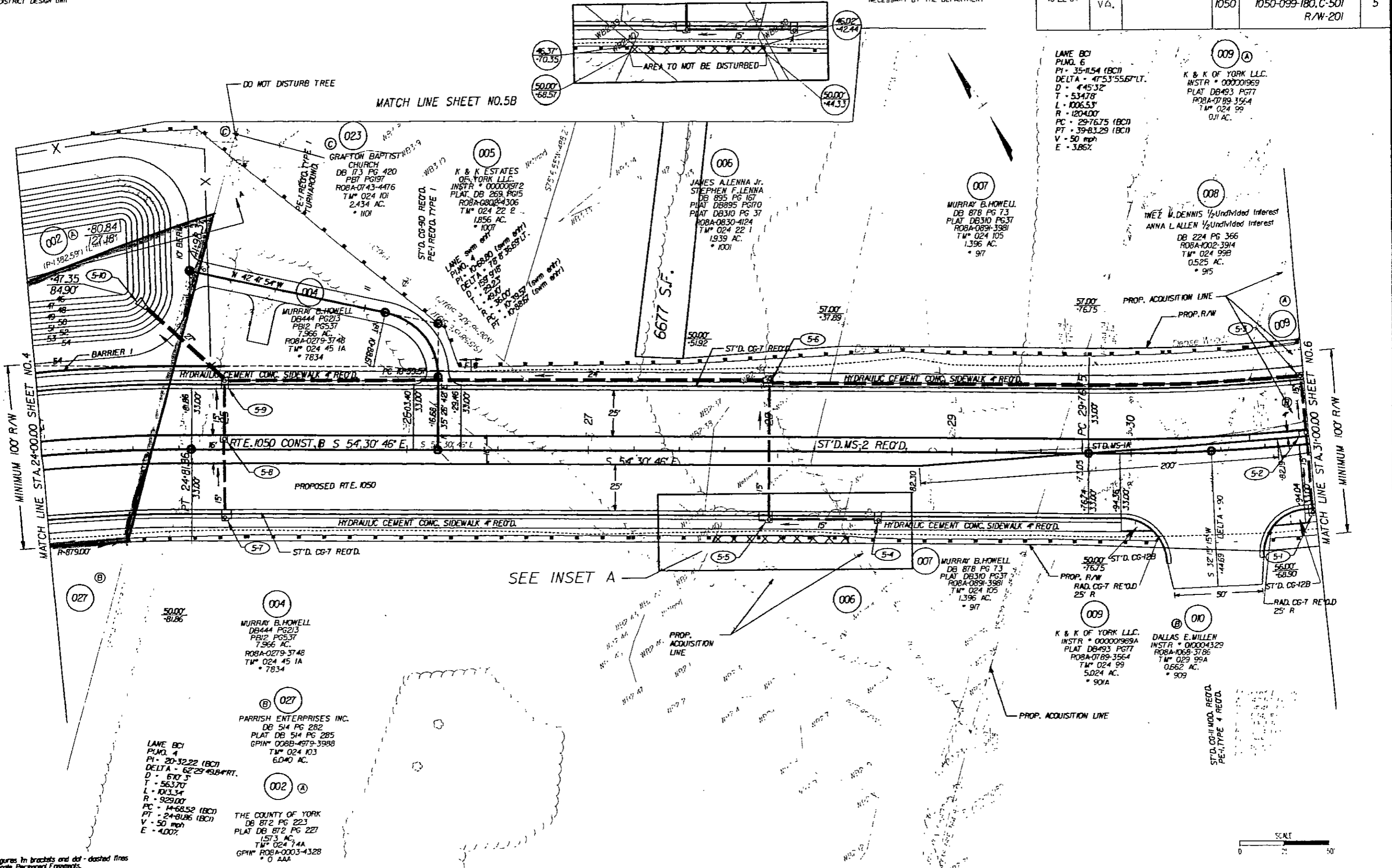


DESIGNED BY: ROBERT D. HAMMOND
 SUPERVISED BY: SONJA HALLUMS-PORTON (571) 925-2560
 DESIGNED BY: J. L. DANE, GEORGE (571) 925-3622
 HAMPTON ROADS DISTRICT DESIGN UNIT

DESIGN FEATURES RELATING TO CONSTRUCTION OR TO REGULATION AND CONTROL OF TRAFFIC MAY BE SUBJECT TO CHANGE AS DEEMED NECESSARY BY THE DEPARTMENT

DATE	STATE	PROJECT	ROUTE	PROJECT	SHEET NO.
10-14-04 10-18-04 10-22-04	VA.		1050	1050-099-180, C-501 R/W-201	5



LAKE BC1
 PLNG. 6
 PI - 35+15.4 (BC1)
 DELTA - 47°53'55.67" LT.
 D - 445.32'
 T - 534.78'
 L - 1006.53'
 R - 1204.00'
 PC - 29+76.75 (BC1)
 PT - 39+83.29 (BC1)
 V - 50 mph
 E - 3.85%

K & K OF YORK LLC.
 INSTR. # 000001969
 PLAT DB493 PG77
 ROBA-0789-3564
 TM# 024 99
 0.11 AC.

THE E. DENNIS 1/2 Undivided Interest
ANNA L. ALLEN 1/2 Undivided Interest
 DB 224 PG 366
 ROBA-1002-3914
 TM# 024 99B
 0.525 AC.
 * 915

MURRAY B. HOWELL.
 DB 878 PG 73
 PLAT DB310 PG37
 ROBA-0891-3981
 TM# 024 105
 1.396 AC.
 * 97

MURRAY B. HOWELL
 DB444 PG213
 PB12 PG537
 7.966 AC.
 ROBA-0279-3748
 TM# 024 45 1A
 * 7834

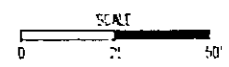
MURRAY B. HOWELL
 DB444 PG213
 PB12 PG537
 7.966 AC.
 ROBA-0279-3748
 TM# 024 45 1A
 * 7834

PARRISH ENTERPRISES INC.
 DB 514 PG 282
 PLAT DB 514 PG 285
 GPIN# 0088-4979-3988
 TM# 024 103
 6.040 AC.

LAKE BC1
 PLNG. 4
 PI - 20+32.22 (BC1)
 DELTA - 62°29'49.84" RT.
 D - 610.3'
 T - 563.70'
 L - 1013.34'
 R - 929.00'
 PC - 14+68.52 (BC1)
 PT - 24+81.86 (BC1)
 V - 50 mph
 E - 4.00%

THE COUNTY OF YORK
 DB 872 PG 223
 PLAT DB 872 PG 227
 1.573 AC.
 TM# 024 74A
 GPIN# ROBA-0003-4328
 * 0 AAA

SEE INSET A



Note: Figures in brackets and dot-dashed lines denote Permanent Easements.

[C] Denotes Construction Units In Cuts
 [E] Denotes Construction Units In Fills
 NOTE: SEE GENERAL NOTES FOR E&S LEGEND

PLAN NO.	PROJECT	FILE NO.	SHEET NO.
	1050-099-180		5