

SUBDIVISION OF PARCELS 9,10,11,12, AND 24

BEING INTERNATIONAL CENTER WILLIAMSBURG, PHASE II

BRUTON DISTRICT YORK COUNTY, VIRGINIA DATE: 11/05/04 SCALE: 1" = 100' REVISED: 12/07/04 SHEET 2 OF 3



LANDMARK DESIGN GROUP

Engineers • Planners • Surveyors Landscape Architects • Environmental Consultants 4029 IRONBOUND ROAD SUITE 100 WILLIAMSBURG, VIRGINIA 23188 (757) 253-2975 FAX: (757) 229-0049

Table with 7 columns: CURVE, LENGTH, RADIUS, TANGENT, CHORD, CHORD BEARING, DELTA. Lists curves C1 through C21 with their respective measurements.

LEGEND

- CMS CONCRETE MONUMENT TO BE SET
•CMF CONCRETE MONUMENT FOUND
•IRS IRON ROD TO BE SET
•IRF IRON ROD FOUND
•IPF IRON PIPE FOUND
RPA RESOURCE PROTECTION AREA

APPROVED:

YORK COUNTY BOARD OF SUPERVISORS

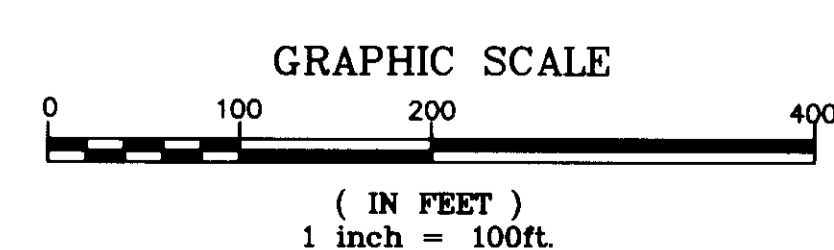
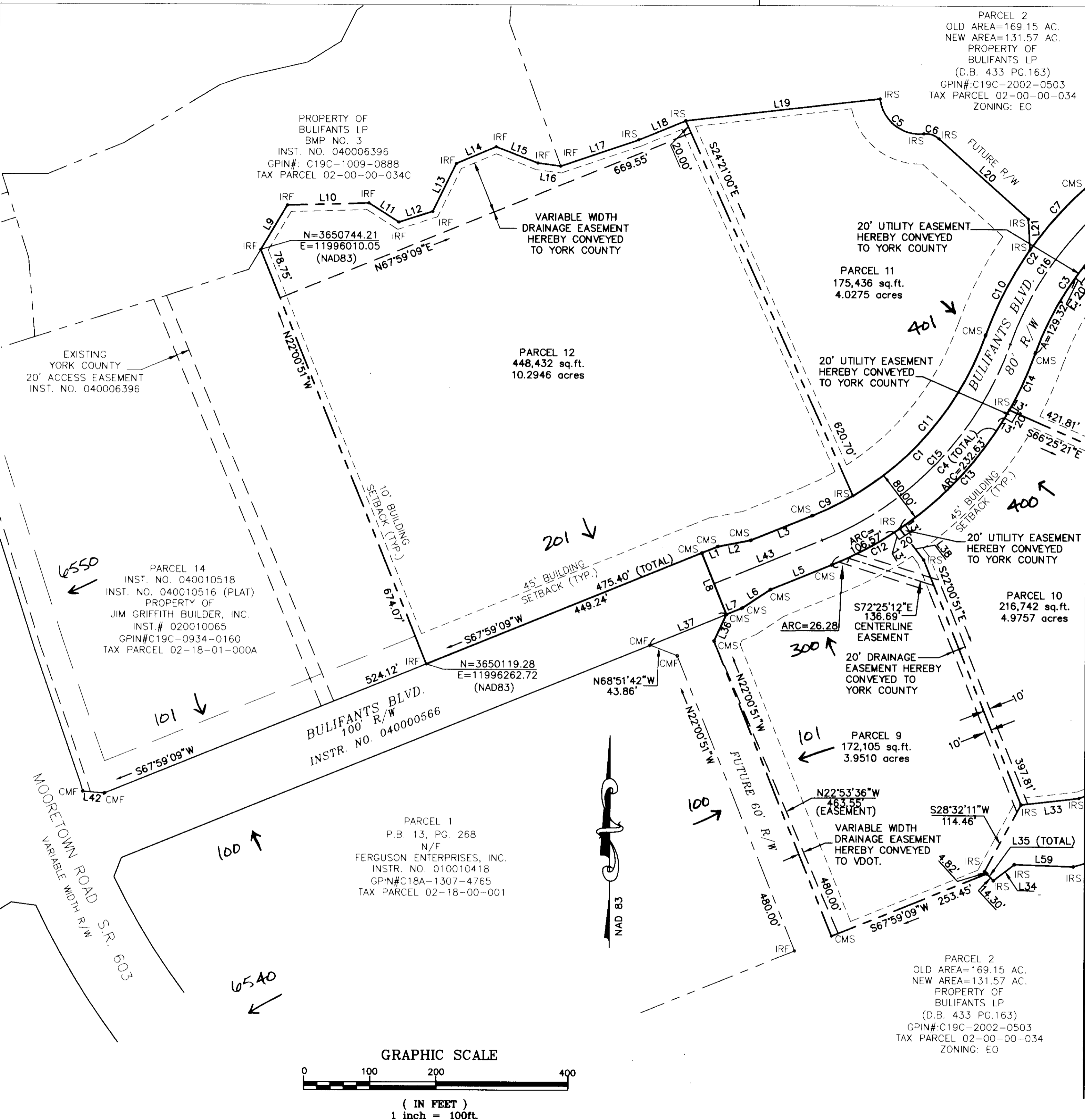
BY: [Signature] PLAT APPROVING AGENT

DATE: 2/4/05

STATE OF VIRGINIA, COUNTY OF YORK IN THE CLERK'S OFFICE OF THE CIRCUIT COURT FOR THE COUNTY OF YORK AND CITY OF POQUOSON THE 7th DAY OF February 2005, THIS MAP WAS PRESENTED AND ADMITTED TO RECORD AS THE LAW DIRECTS AS INSTRUMENT NO. 050008172 9:11am

TESTE: Lynn S. Jenkins CLERK

BY: Christia Norman, D.C.



1950-241 009 09 Information: CNTR: P12 SUBDIVISION PLAT:INTENT:SUBPLAT.dwg